



Community Safety and Crime Reduction Strategy 2002/5

Performance Report

**1st July 2004 to 30th September 2004
2004/5 Quarter 2**

Aim

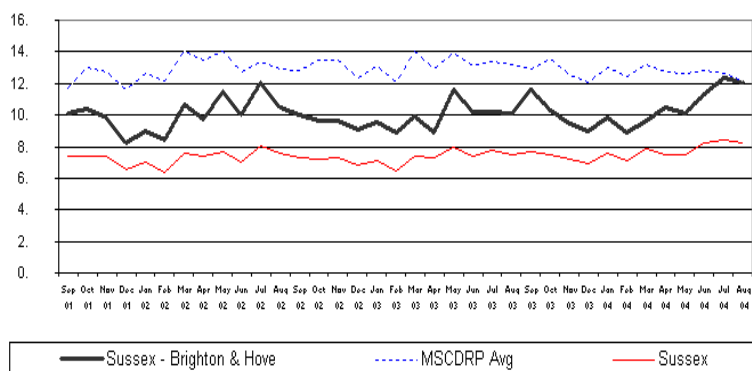
This report has been produced to inform the Community Safety Forum of performance in the field of crime reduction within the current Community Safety Strategy priority areas. It is an edited version of the Performance and Activity Report produced for the RAP/DAAT Quarterly meeting.

Method

The Performance and Activity Report is informed by; Sussex Police Crime Performance figures, Sussex Police Brighton and Hove Division Tactical and Strategic Assessments, Community Safety Action Groups and Strategic Groups, the Community Safety Team and open sources.

Total Crime

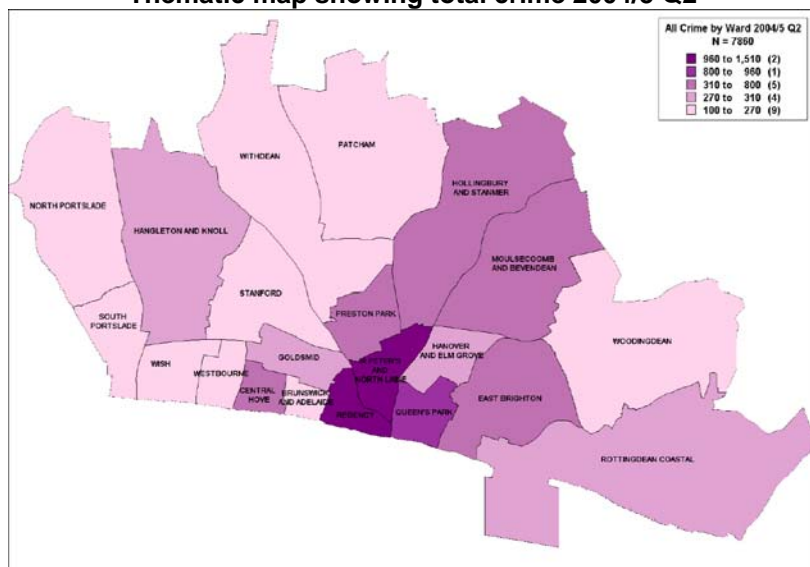
Total Crime per 1000 population (last 3 years)



Comparison Chart - Crimes per 1000 Residents Sussex - Brighton & Hove All Crime 'Most Similar' CDRPs 01 Sep 2001 - 31 Aug 2004

	2002/3 Q3	2002/3 Q4	2003/4 Q1	2003/4 Q2	2003/4 Q3	2003/4 Q4	2004/5 Q1	2004/5 Q2
Total Crime	7073	7057	7674	7969	7172	7082	7844	8942
Rank out of 15 most similar CDRPs						2 nd	4 th	8 th

Thematic map showing total crime 2004/5 Q2



Key Points

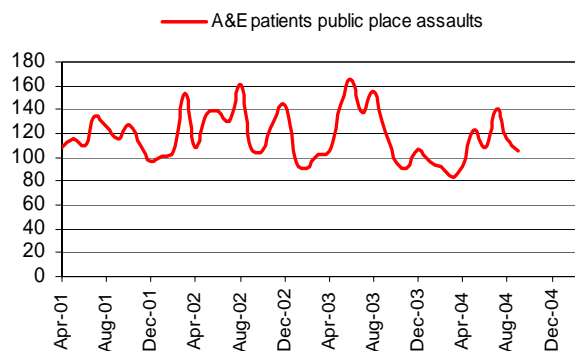
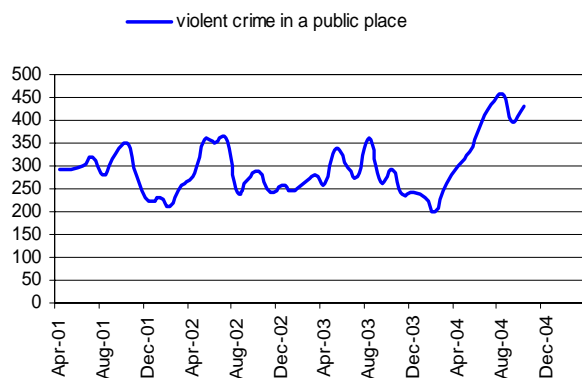
- o All Crime performance has dropped this quarter with Brighton and Hove CDRP moving from 4th to 8th position against its most similar CDRPs. Overall, total crime has increased by 8.1% (where the target is a 2% reduction on 2003/4 figures) The increase in recorded public place violent crime, due to changes in recording practice, is affecting total crime and probably the main reason for the increase in total crime
- o Detection rates for all Brighton and Hove crimes are below target at 19.2% (where the target is 26%)
- o The largest percentage of offences are occurring in the Brighton Town Centre Wards of Regency (19%), St Peters and North Laine (12%) and Queens Park (10%) accounting for 41% of all Brighton and Hove crime

Violent Crime

All violent crime	2002/3 Q3	2002/3 Q4	2003/4 Q1	2003/4 Q2	2003/4 Q3	2003/4 Q4	2004/5 Q1	2004/5 Q2
CDRP ranking						1 st	3 rd	6 th

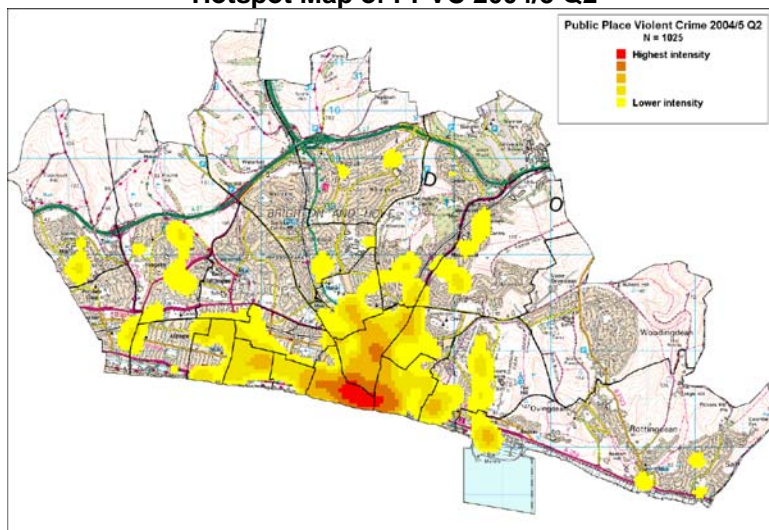
Public Place Violent Crime/Assaults (Police)

Public Place Assaults (A&E)



Public Place Violent Crime	2002/3 Q3	2002/3 Q4	2003/4 Q1	2003/4 Q2	2003/4 Q3	2003/4 Q4	2004/5 Q1	2004/5 Q2
Police	785	787	897	905	775	694	1015	1287
A&E	379	289	417	414	293	271	324	362

Hotspot Map of PPVC 2004/5 Q2

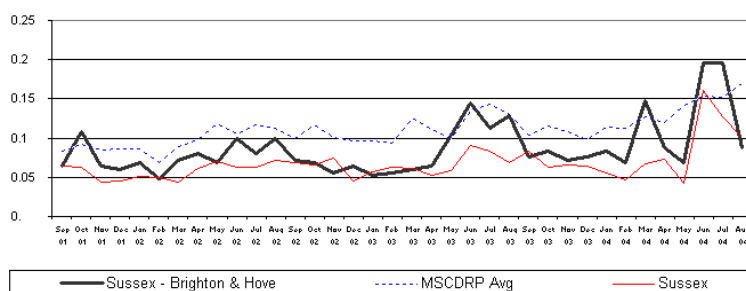


Key Points

- o Police recorded PPVC (Public Place Violent Crime) has increased by around 14% on the previous quarter which is due to a change in recording practices as similar trends are not apparent in A&E data
- o Brighton town centre remains the hotspot location for PPVC
- o The Home Office driven Alcohol Misuse Enforcement Campaign (AMEC) is to take place over the Christmas period
- o There has been an increase in late night bus services
- o Christmas Operation Marble (high visibility policing) is planned and duties allocated
- o Fixed Penalty Notices to be introduced for public place drunkenness
- o New Violent Crime Reduction Officer to be recruited

Sexual Offences

Sexual Offences per 1000 population (last 3 years)



Comparison Chart - Crimes per 1000 Residents Sussex - Brighton & Hove Sexual Offences 'Most Similar' CDRPs 01 Sep 2001 - 31 Aug 2004

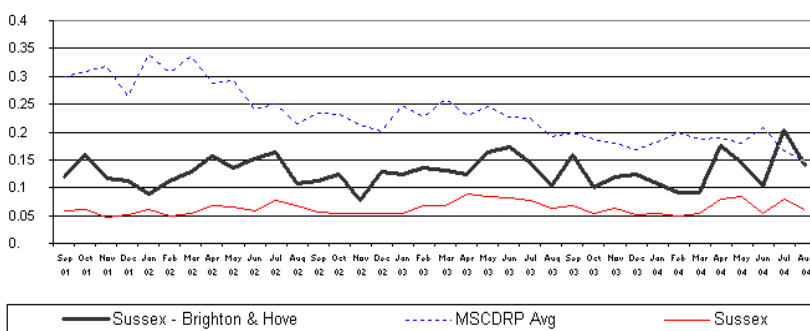
	2002/3 Q3	2002/3 Q4	2003/4 Q1	2003/4 Q2	2003/4 Q3	2003/4 Q4	2004/5 Q1	2004/5 Q2
No. Sexual Offences	N/K	N/K	78	79	58	75	45	151

Key Points

- o The high number of sexual offences this quarter is a trend experienced throughout the force, probably due to the reclassification of a number of offences implemented in May 2004
- o The Spiked campaign has been present at Pride and University Fresher's fairs and held a number of publicity events

Robbery

Robberies per 1000 population (last 3 years)



Comparison Chart - Crimes per 1000 Residents Sussex - Brighton & Hove Robbery of personal property 'Most Similar' CDRPs 01 Sep 2001 - 31 Aug 2004

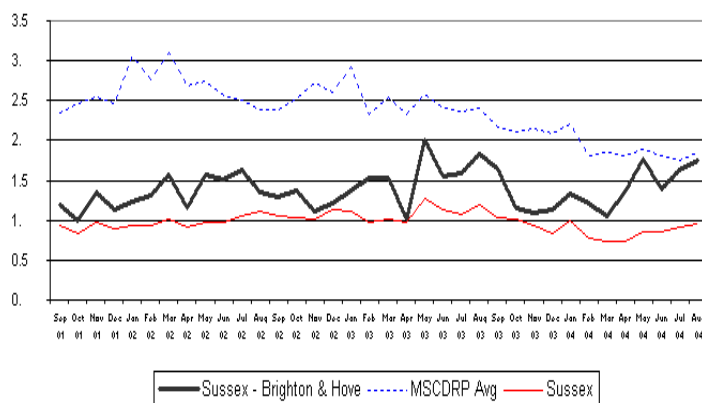
	2002/3 Q3	2002/3 Q4	2003/4 Q1	2003/4 Q2	2003/4 Q3	2003/4 Q4	2004/5 Q1	2004/5 Q2
No of All Robberies	102	115	146	128	101	85	118	121
Rank out of 15 most similar CDRPs						7 th	8 th	12 th

Key Points

- o The hotspot location for robberies is Brighton city centre

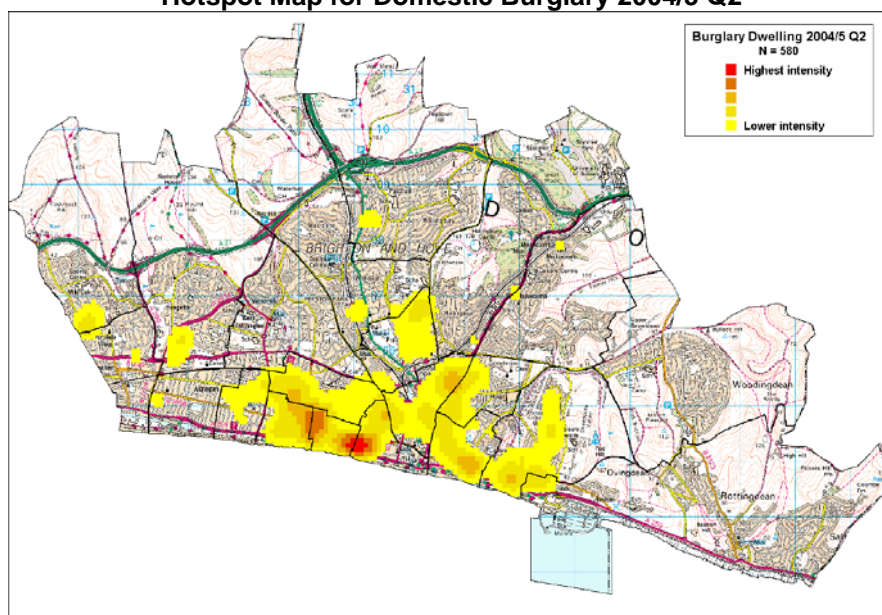
Domestic Burglary

Domestic Burglary per 1000 households (last 3 years)



	2002/3 Q3	2002/3 Q4	2003/4 Q1	2003/4 Q2	2003/4 Q3	2003/4 Q4	2004/5 Q1	2004/5 Q2
No of Domestic Burglaries	433	518	534	593	394	421	523	573
Rank out of 15 most similar CDRPs						8 th	10 th	10 th

Hotspot Map for Domestic Burglary 2004/5 Q2

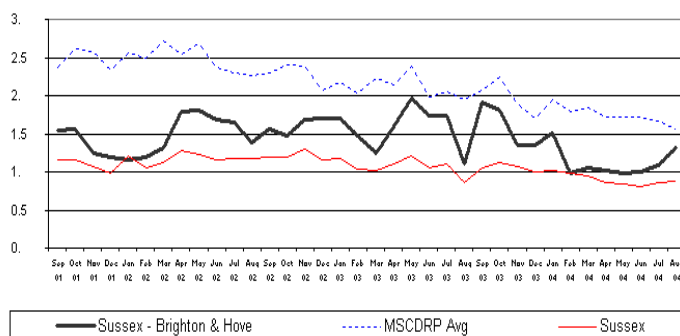


Key Points

- o Although showing a downward trend for the month of September, Burglary Dwelling is currently over target showing a 0.2% decrease when a 5% decrease is required
- o East Brighton shows the highest number of offences making up 9% of BD this quarter. Operation Allensford has been launched to deal with this series
- o Operation Aphrodite is targeting the Hove burglary hotspot
- o This quarter has seen an increased trend for burglaries where the occupier is present
- o A new Acquisitive Crime Officer has recently been employed

Vehicle Crime

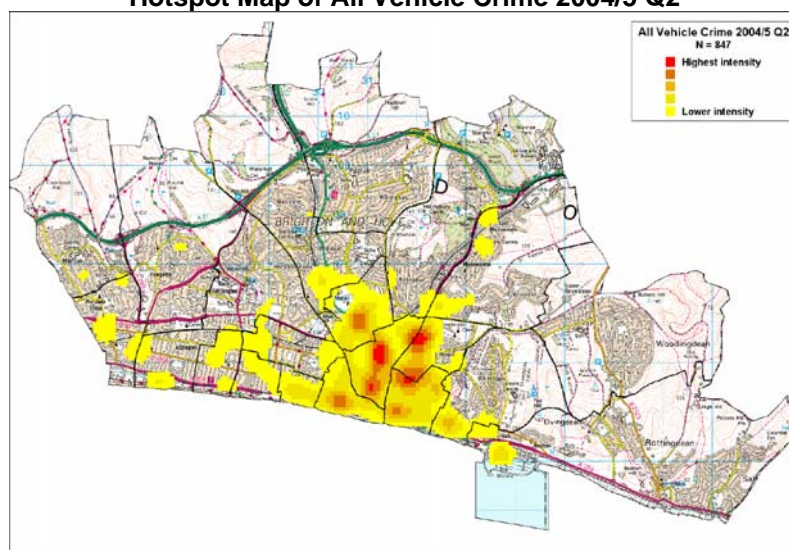
Vehicle Crime per 1000 Population (last 3 years)



Comparison Chart - Crimes per 1000 Residents Sussex - Brighton & Hove Vehicle Crime (excluding Vehicle Interference) 'Most Similar' CDRPs: 01 Sep 2001 - 31 Aug 2004

	2002/3 Q3	2002/3 Q4	2003/4 Q1	2003/4 Q2	2003/4 Q3	2003/4 Q4	2004/5 Q1	2004/5 Q2
No of Vehicle Crimes	1216	1107	1318	1192	1126	887	754	897
Rank out of 15 most similar CDRPs						3 rd	2 nd	2 nd

Hotspot Map of All Vehicle Crime 2004/5 Q2



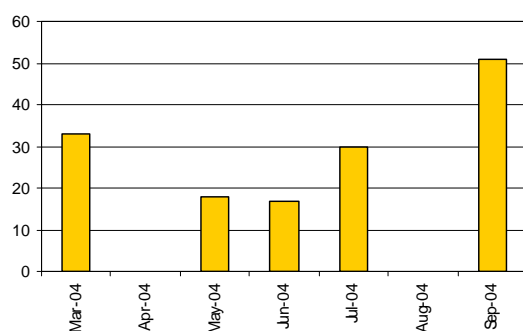
Key Points

- o Vehicle crime has seen a rise of 5% (867 to 906 offences) since Quarter 1 but has remained comparatively low and below target with a 34% reduction on last years figures
- o Town centre Car Parks are frequently appearing as hotspot locations for theft from motor vehicle
- o The most common wards for stolen vehicles to be recovered are Queens Park and Moulsecomb and Bevendean
- o Preston park is a hotspot for both theft of and theft from motor vehicle
- o Stolen vehicles are generally low value (valued at less than £3000)
- o Rough sleepers (seen as possible suspects) have been moved on from car parks
- o The NCP covert unit is working in liaison with B&H police to reduce offences in car parks

Anti-Social Behaviour

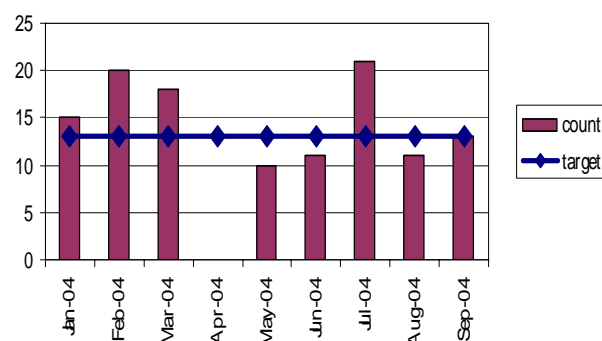
	2003/4 Total	2004/5 Q1	2004/5 Q2	2004/5 Q3	2004/5 Q4
0-17 Year Olds					
New ASBOs	11	8	6		
ASBO breaches	7	1	4		
Acceptable Behaviour Contracts	26	10	8		
18 +					
New ASBOs	16	16	7		
ASBO breaches	9	5	3		
Acceptable Behaviour Contracts	14	5	7		
Total					
New ASBOs	27	24	13		
ASBO breaches	16	6	7		
Acceptable Behaviour Contracts	40	15	15		

Street drinkers (monthly count)



Monthly count of beggars

(60% reduction by March 2005 from Nov 2003 baseline of 33)

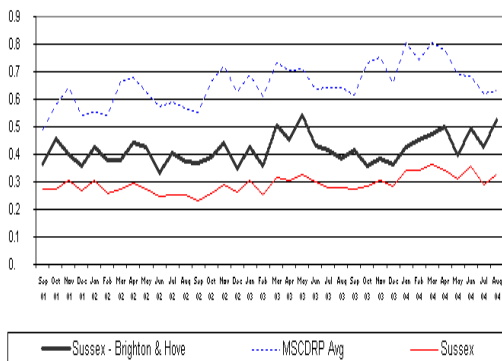


Key Points

- o It has been a very busy period with 24 ASBOs served
- o 50% of beggars identified in the August and September Begging Audit were new to Brighton (when the total number of beggars counted in August and September was 24)
- o The begging count is on target to be achieved, with 3 street drinking and Begging Audits carried out in Q2
- o 29 Anti-social behaviour cases have been handled in 3 hotspot locations using problem-solving approach

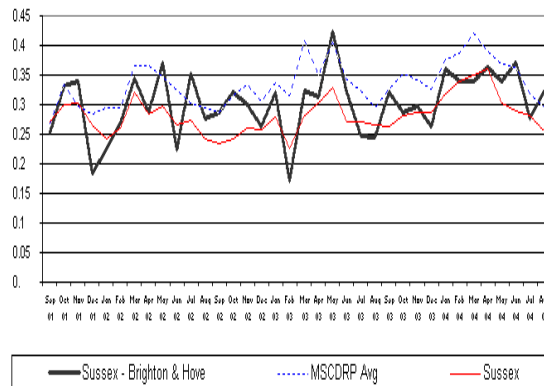
Criminal Damage and Quality of Life

Criminal Damage to Dwellings per 1000 pop (last 3 years)



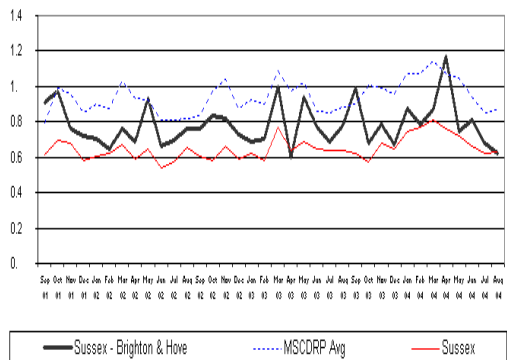
Comparison Chart - Crimes per 1000 Residents Sussex - Brighton & Hove Damage to Dwellings 'Most Similar' CDRPs 01 Sep 2001 - 31 Aug 2004

Criminal Damage to Other Buildings per 1000 pop (last 3 years)



Comparison Chart - Crimes per 1000 Residents Sussex - Brighton & Hove Damage to Other Buildings 'Most Similar' CDRPs 01 Sep 2001 - 31 Aug 2004

Criminal Damage to Vehicles per 1000 pop (last 3 years)

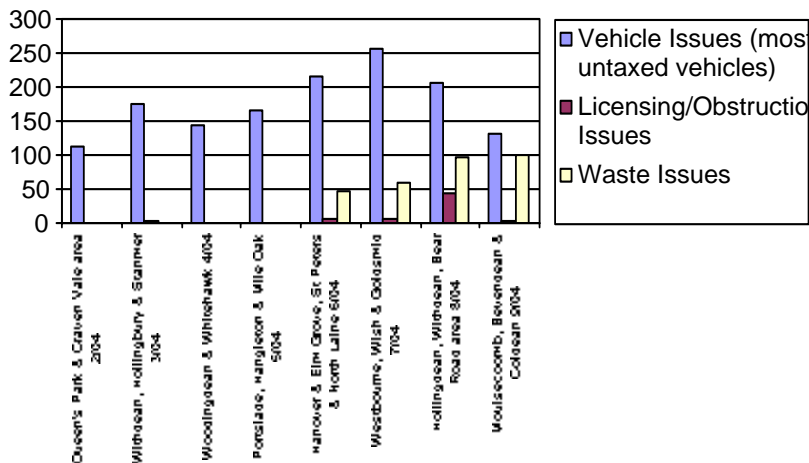


Comparison Chart - Crimes per 1000 Residents Sussex - Brighton & Hove Damage to Vehicles 'Most Similar' CDRPs 01 Sep 2001 - 31 Aug 2004

Key Points

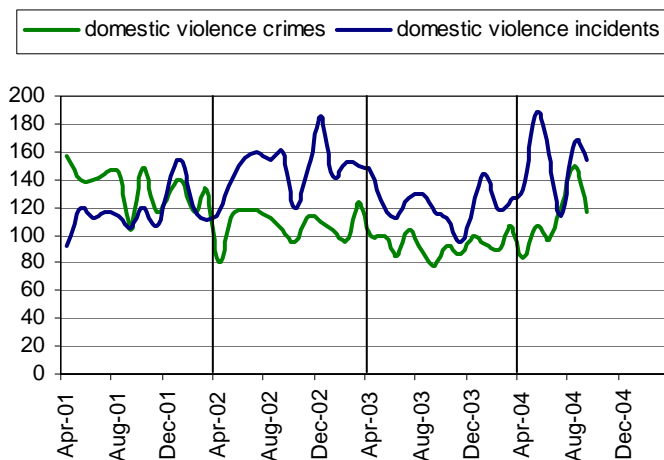
- o Operation Scrap It (removal of abandoned vehicles) may be responsible for the reduction of vehicle arsons attended by the fire service, with 243 vehicles being removed this quarter
- o 10 hotspot locations have been adopted for multi-agency action including business and community involvement
- o 27 Fixed Penalty Notices (FPN) have been served this quarter for offences relating to the environment and criminal damage

Operation Scrap It, Feb 2004 - Sep



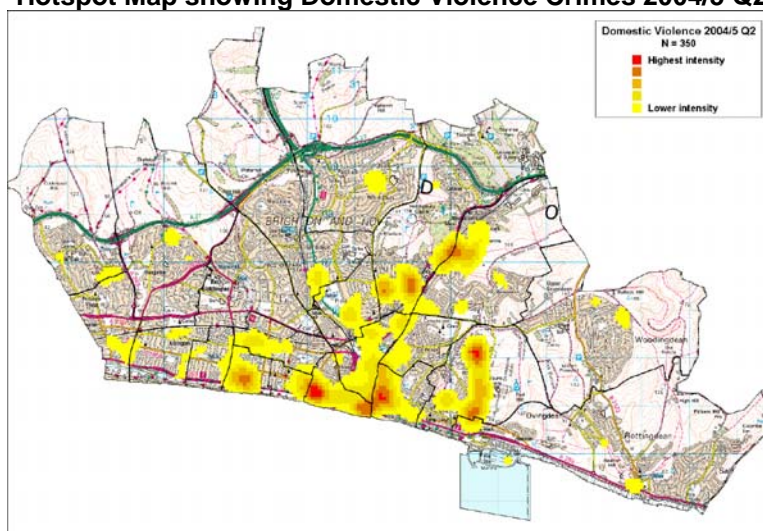
Domestic Violence

Domestic Violence Crimes and Incidents



	2002/3 Q3	2002/3 Q4	2003/4 Q1	2003/4 Q2	2003/4 Q3	2003/4 Q4	2004/5 Q1	2004/5 Q2
No of DV Crimes	319	323	284	268	278	289	286	386
No of DV Incidents	456	445	376	373	327	387	480	435
Total	775	768	660	641	605	676	766	821

Hotspot Map showing Domestic Violence Crimes 2004/5 Q2

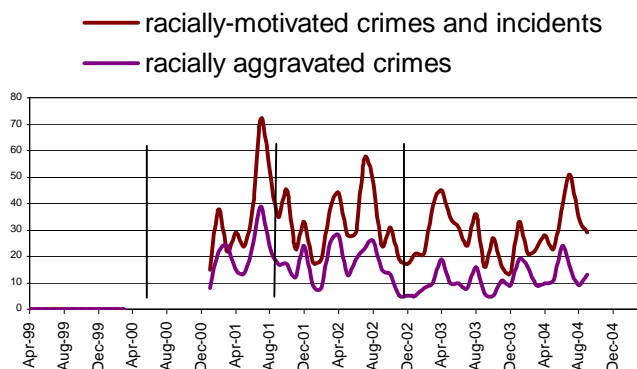


Key Points

- o There has been an increase of 27% (crimes and non-crimes) since the previous quarter
- o The highest count of domestic violence crimes falls in the ward of East Brighton which may be due to an increase in activities by agencies to provide support
- o There is a decreased service offered by the Women's Refuge due to a loss of funding

Racial Harassment

Racial Harassment crimes and incidents



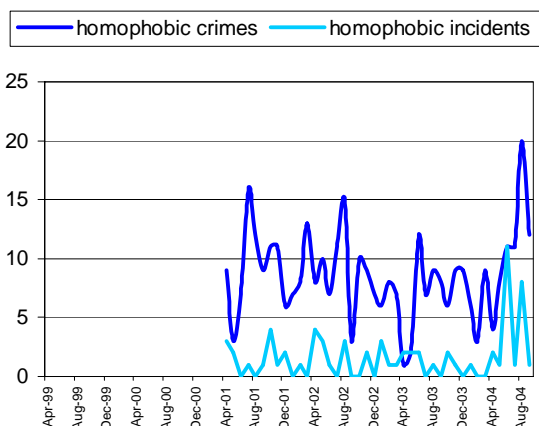
	2002/3 Q3	2002/3 Q4	2003/4 Q1	2003/4 Q2	2003/4 Q3	2003/4 Q4	2004/5 Q1	2004/5 Q2
No. Racist Crimes and Incidents	67	81	109	74	55	77	90	115
Racist Incident Report Forms	74	56	77	42	74	82	86	142

Key Points

- o Racist incidents have increased by 21% in Quarter 2
- o The Racial Harassment AGM took place this quarter with the election of new Chair
- o Racial harassment case workers have been present at Brighton University Freshers Fair targeting Foreign Students with information and advice
- o A Detached Youth Worker has been working with young victims of racist abuse
- o The new Racist Incident report form has been launched and made available to the public on numerous websites

Homophobic/LGBT Hate Crimes

Homophobic Crimes and Incidents



Key Points

- o The number of homophobic incidents has increased by 43% compared to the previous quarter
- o The hotspot location for homophobic offences is St James Street
- o The largest ever Gay Pride was hosted by the city and included representation from the Community Safety Team

	2002/3 Q3	2002/3 Q4	2003/4 Q1	2003/4 Q2	2003/4 Q3	2003/4 Q4	2004/5 Q1	2004/5 Q2
Homophobic Crimes and Incidents	28	26	21	24	27	19	37	53

Notes

CDRP Family Group

The CDRP most similar family group is defined according to a set of demographic characteristics, which are linked to the propensity for crime and disorder. Family group data are unofficial until the July after the close of each financial year and are indicative only with the most recent groupings revised in April 2004. The purpose of these groups is to provide a means by which performance of an individual CDRP can be compared with other similar CDRPs.

Other CDRPs in Brighton and Hove's Group are; Wandsworth, Eastbourne, Cheltenham, Bristol, Exeter, Hastings, Plymouth, Reading, Portsmouth, Lincoln, Newcastle-upon-Tyne, Southampton, Leeds and Norwich.

CDRP Family Ranking

The lower the ranking, the better the performance. This measure is used by the Home Office to scrutinise CDRP performance.

Trend Graphs

Where comparative data is available, the Brighton & Hove trend is shown together with the Family average and the Sussex Police Force average and data is presented according to the number per 1000 resident population or household. Where CDRP data is not available, trend data is presented from locally collated sources.

CADDIE Data Source

(Used for mapping and analysis) CADDIE receives raw data from partner agencies that is sanitised and geo-coded before being analysed. Any record with an insufficient or partial address (or Beat 0) will be lost and so CADDIE cannot be used to produce performance data but should be seen as 'operational'. For further information go to www.caddie.gov.uk

Hotspot Map

Hotspot maps are used to aggregate high volumes of crime and simplify the display of large amounts of crime data. Hotspots show where there are clusters of offences and help identify where resources should be targeted.

Thematic Map

A thematic map is helpful in showing the distribution of crimes by ward area. The higher the count of offences, the darker shade the ward will be coloured.

Point Data Map

Points are used to display the location and distribution of an offences type. The mapping software automatically aggregates overlapping points into one so that e.g. one point may represent five offences.