

Brighton & Hove



Crime & Disorder Reduction Partnership

**Community Safety and Crime Reduction Strategy 2002/5**

## **Performance Report**

**1<sup>st</sup> October to 31<sup>st</sup> December 2004  
2004/5 Quarter 3**

### **Aim**

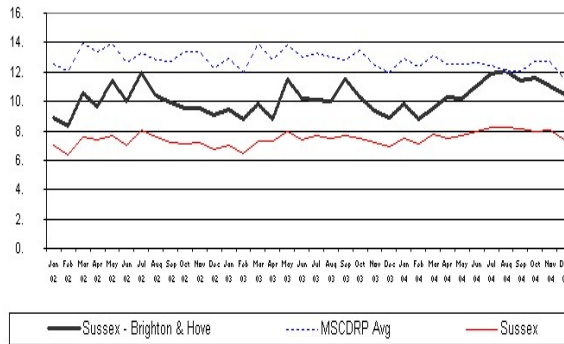
This report has been produced to inform the Community Safety Forum of performance in the field of crime reduction within the current Community Safety Strategy priority areas. It is an edited version of the Performance and Activity Report produced for the RAP/DAAT Quarterly meeting.

### **Method**

The Performance and Activity Report is informed by; Sussex Police Crime Performance figures, Sussex Police Brighton and Hove Division Tactical and Strategic Assessments, Community Safety Action Groups and Strategic Groups, the Community Safety Team and open sources.

# All Crime

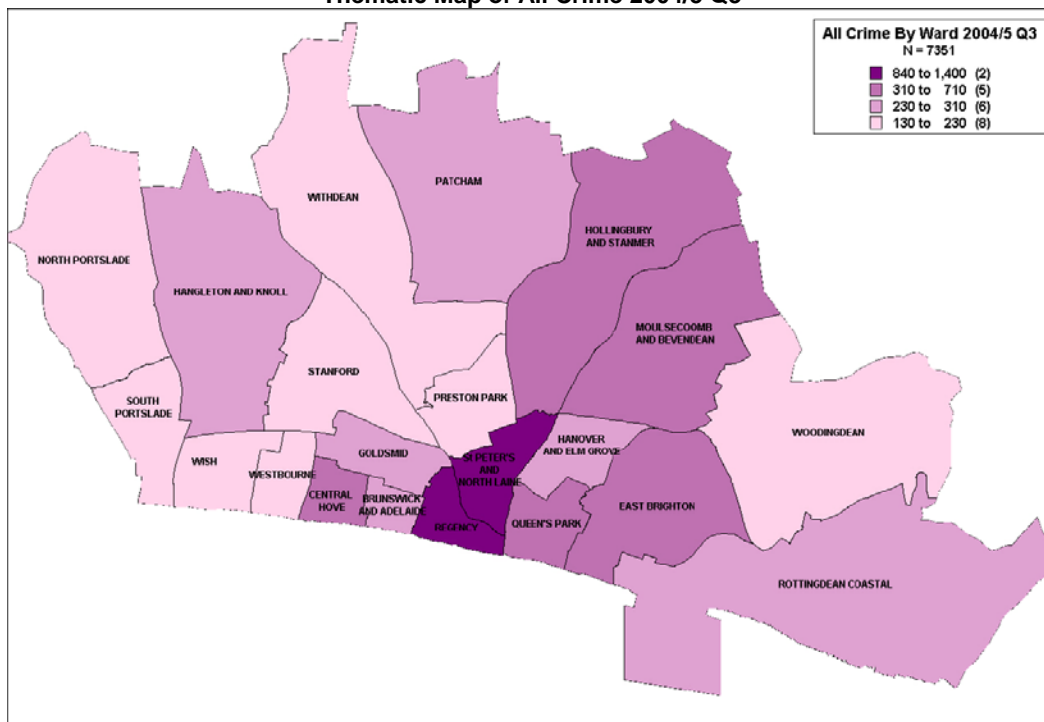
Total Crimes per 1000 population



Comparison Chart - Crimes per 1000 Residents Sussex - Brighton & Hove All Crime - Most Similar CDRPs: 01 Jan 2002 - 31 Dec 2004

	2002/3 Q4	2003/4 Q1	2003/4 Q2	2003/4 Q3	2003/4 Q4	2004/5 Q1	2004/5 Q2	2004/5 Q3
<b>Total Crime</b>	7057	7674	7969	7172	7082	7844	8942	8304
<b>Rank out of 15 most similar CDRPs</b>					2 <sup>nd</sup>	4 <sup>th</sup>	8 <sup>th</sup>	7 <sup>th</sup>

Thematic Map of All Crime 2004/5 Q3



## Key Points

- o Overall crime figures are in keeping with seasonal trends in showing a reduction over Quarter 3
- o Although the detection rate is lower than the same period last year, the actual number of detections is 13.3% higher than the previous year
- o National Crime Recording Standards (NCRS) are still impacting on PPVC and therefore all crime
- o The town centre continues to be the crime hotspot with 40% of offences occurring in the wards of Queens Park, Regency and St Peters and North Lane

# Partnership Community Safety Team Front Line Services

Table showing PCST Front line services performance

	2004/5 Q3			
	Sept	Oct	Nov	Dec
New Contacts	80	91	100	52
Old Contacts	8	7	0	25
<b>Cases referred to a caseworker;</b>				
Racial Harassment	8	3	2	0
Domestic Violence	0	1	0	3
Anti-Social Behaviour	8	8	8	7

## Key Points

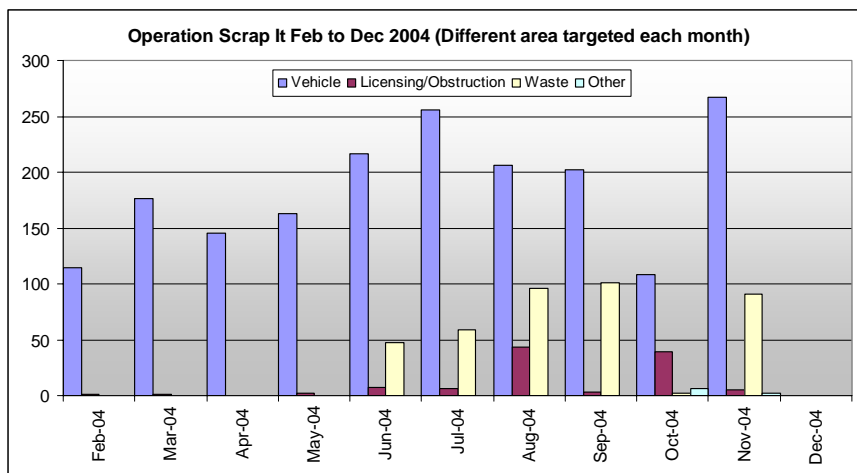
- o Launch of the drop in facility 'Advice Junction' at Hove Town Hall with publicity in a number of local media and advertising from partner agencies
- o A variety of media has been distributed to advertise the front line service and further links have been developed with community, voluntary and statutory sectors to progress cases

## Partnership Community Safety Team general activities

### Key Points

- o The Community Safety Audit draft has been completed and gone for public consultation for the strategy document to be formulated
- o A Strategy Planning day is being given for all key agency senior staff and a Partnership day is planned to raise the profile of the team, to improve outputs and thank key partners for their support

# Quality Of Life

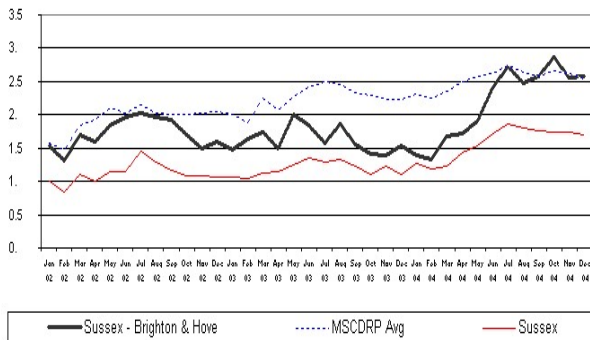


## Key Points

- o Multi-agency Operation Scrap It (street level environmental issues) targeted Patcham, Hollingbury and Withdean in October and Central Hove in November. No operation took place in December due to other priorities
- o Future activities include targeted action to tackle anti-social behaviour on 10 consecutive days in March as part of the Government's Together Campaign, and the launch of the National Anti-Graffiti Reporting Hotline in Brighton and Hove

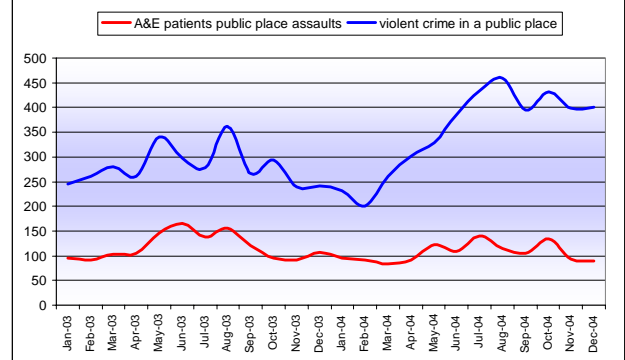
# All Violent Crime and Public Place Violent Crime (PPVC)

**All Violent Crime per 1000 Population**



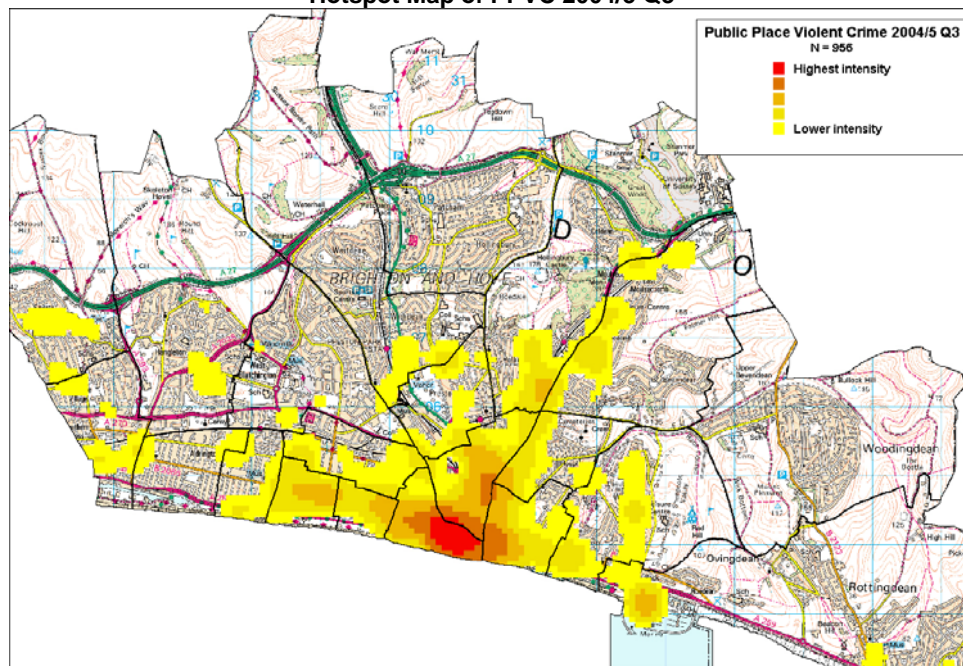
Comparison Chart - Crimes per 1000 Residents Sussex - Brighton & Hove Violent Crime 'Most Similar' CDRP: 01 Jan 2002 - 31 Dec 2004

**Public Place Violent Crime (Police) and Public Place Assaults (A&E) (last 2 yrs)**



	2002/3 Q4	2003/4 Q1	2003/4 Q2	2003/4 Q3	2003/4 Q4	2004/5 Q1	2004/5 Q2	2004/5 Q3
<b>No. of PPVC</b>	787	897	905	775	694	1015	1287	1232
<b>No. of Public Place Assaults (A&amp;E)</b>	289	417	414	293	271	324	362	317

**Hotspot Map of PPVC 2004/5 Q3**

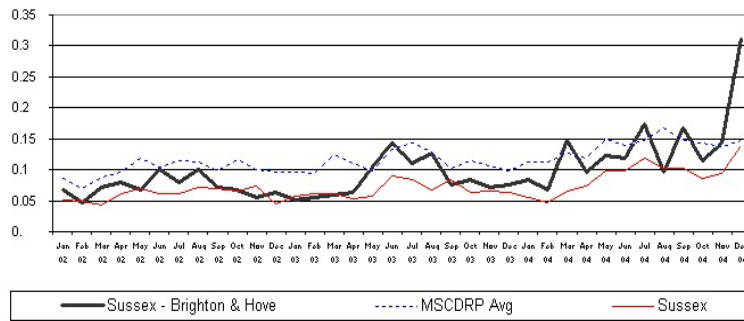


## Key Points

- o PPVC has increased by 37.5% (where the target is a 2% reduction) compared with the same reporting period last year due to changes in police recording standards. A&E public place assaults do not show this increase, and are performing better than the target (see above graph)
- o PPVC has decreased since the previous quarter with the greatest decrease seen in assault occasioning actual bodily harm (-11.5%) and common assault (-6%)
- o The Licensing Act 2003 is both a threat and an opportunity in terms of PPVC. It is possible that PPVC may see an increase in the short term, but also possible that in the long term staggered closing hours may mean less disorder

# Sexual Offences

## Sexual Offences per 1000 population



Comparison Chart - Crimes per 1000 Residents Sussex - Brighton & Hove Sexual Offences 'Most Similar' CDRPs 01 Jan 2002 - 31 Dec 2004

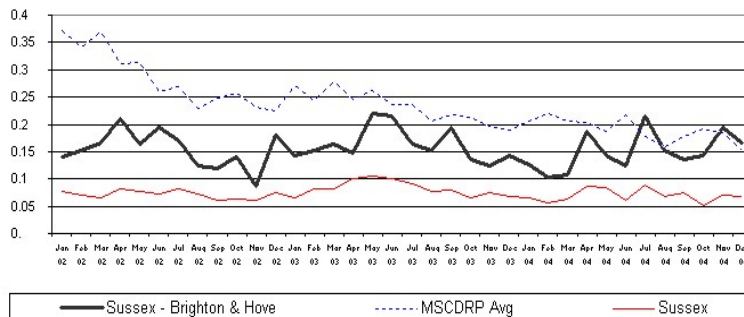
	2002/3 Q4	2003/4 Q1	2003/4 Q2	2003/4 Q3	2003/4 Q4	2004/5 Q1	2004/5 Q2	2004/5 Q3
<b>No. of Sexual Offences</b>	N/K	78	79	58	75	45	151	116

### Key Points

- o The sexual offences act 2003 has impacted on Brighton and Hove's figures by classifying indecent exposure as a sexual offence where it used to be under the Home Office category of 'other'
- o 85% of sexual offence victims are female
- o The multi-agency campaign Spiked continues to raise awareness of drink spikings.

# Robbery

## Robberies per 1000 Population



Comparison Chart - Crimes per 1000 Residents Sussex - Brighton & Hove Robbery 'Most Similar' CDRPs 01 Jan 2002 - 31 Dec 2004

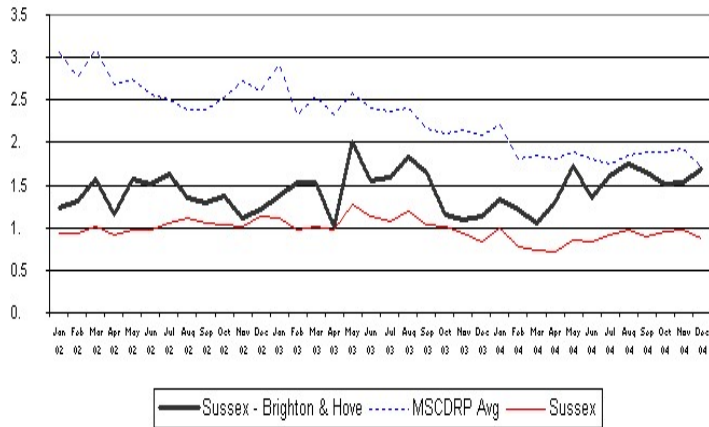
	2002/3 Q4	2003/4 Q1	2003/4 Q2	2003/4 Q3	2003/4 Q4	2004/5 Q1	2004/5 Q2	2004/5 Q3
<b>No of All Robberies</b>	115	146	128	101	85	118	121	128
<b>Rank out of 15 most similar CDRPs</b>					7 <sup>th</sup>	8 <sup>th</sup>	12 <sup>th</sup>	12 <sup>th</sup>

### Key Points

- o Reported robberies show a similar number to last quarter with ranking against similar CDRPs remaining twelfth, although offences per 1000 population are just under the group average
- o Historically, reported robbery shows little change in Quarter 4 but is likely to increase over the summer months
- o The next quarter will see an enhanced focus on Robbery though the Home Office Robbery street crime initiative

# Domestic Burglary

Domestic Burglary per 1000 households

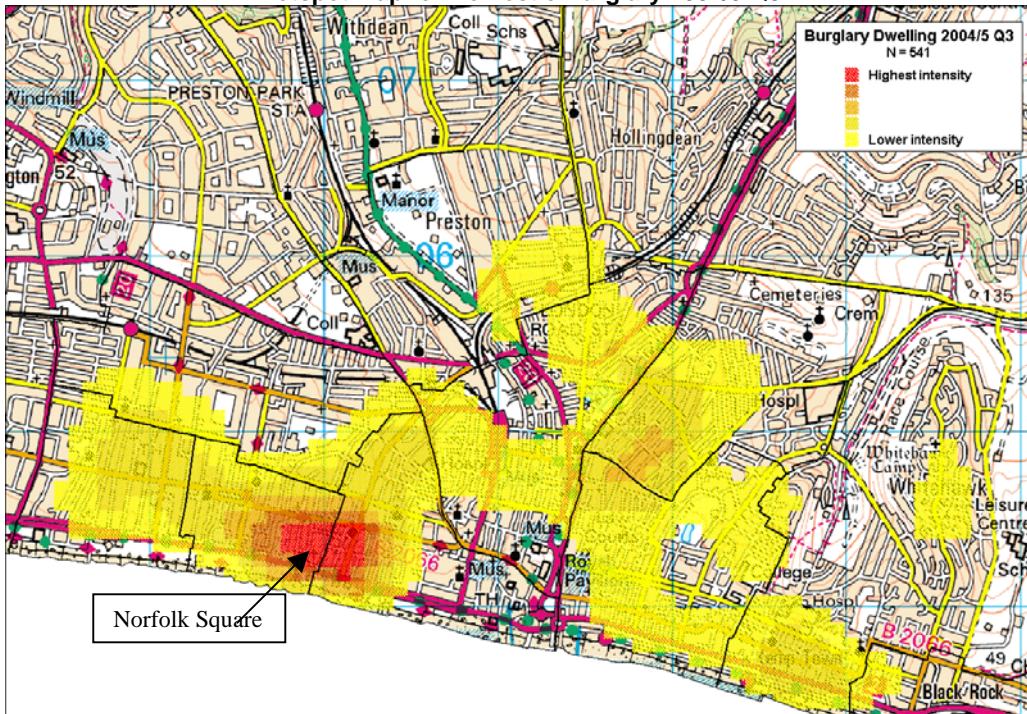


	2002/3 Q4	2003/4 Q1	2003/4 Q2	2003/4 Q3	2003/4 Q4	2004/5 Q1	2004/5 Q2	2004/5 Q3
<b>No of Domestic Burglaries</b>	518	534	593	394	421	523	573	550
<b>Rank out of 15 most similar CDRPs</b>					8 <sup>th</sup>	10 <sup>th</sup>	10 <sup>th</sup>	9 <sup>th</sup>

**Key Points**

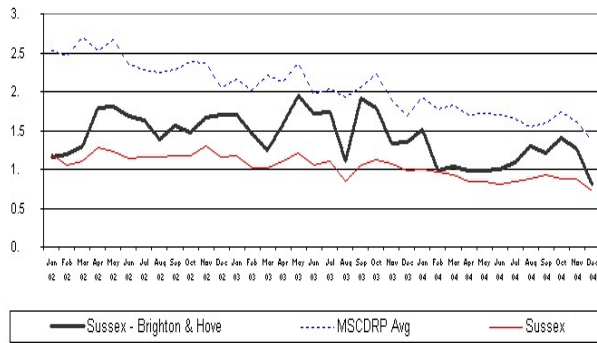
- o The hotspot for domestic burglary is around Norfolk Square, this is the same hotspot as last quarter with the Hove hotspot dropping off through successful targeting.
- o There is an increased trend for unsophisticated breaks into multi-occupancy residencies where low value, easy to carry items are taken
- o Newly appointed Acquisitive Crime Officer has re-formed the Burglary Reduction Task group and begun work on action plans

Hotspot Map for Domestic Burglary 2004/5 Q3



# Vehicle Crime

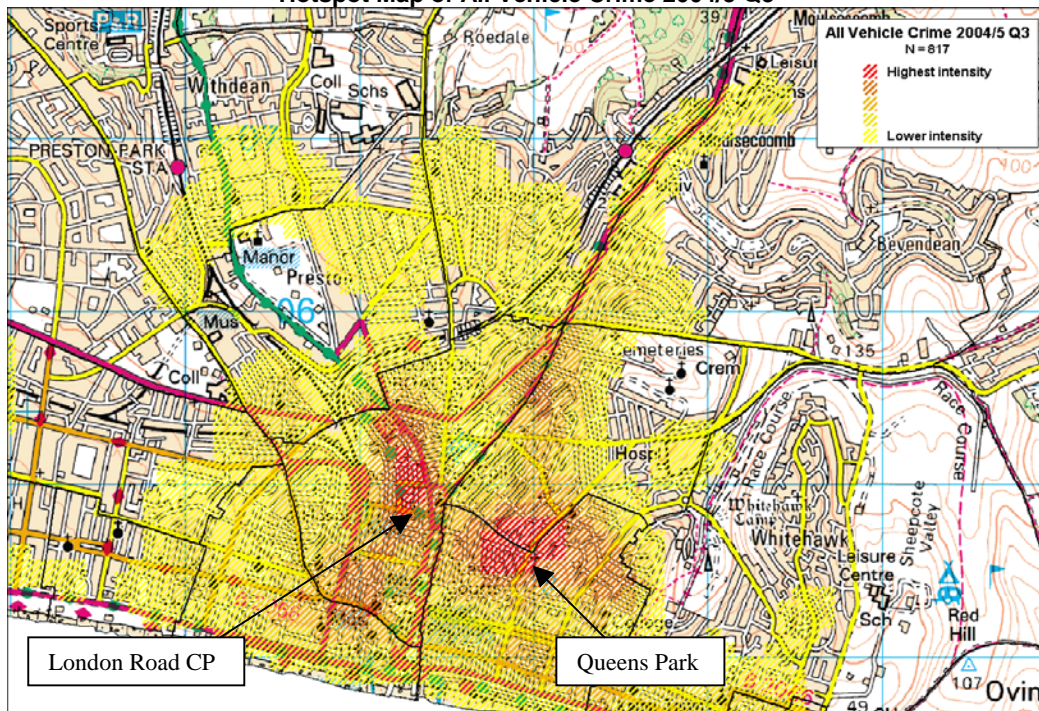
Vehicle Crime per 1000 Population



Comparison Chart - Crimes per 1000 Residents Sussex - Brighton & Hove Vehicle Crime (excluding Vehicle Interference) Most Similar CDRPs 01 Jan 2002 - 31 Dec 2004

	2002/3 Q4	2003/4 Q1	2003/4 Q2	2003/4 Q3	2003/4 Q4	2004/5 Q1	2004/5 Q2	2004/5 Q3
No of Vehicle Crimes	1107	1318	1192	1126	887	754	897	868
Rank out of 15 most similar CDRPs					3 <sup>rd</sup>	2 <sup>nd</sup>	2 <sup>nd</sup>	6 <sup>th</sup>

Hotspot Map of All Vehicle Crime 2004/5 Q3



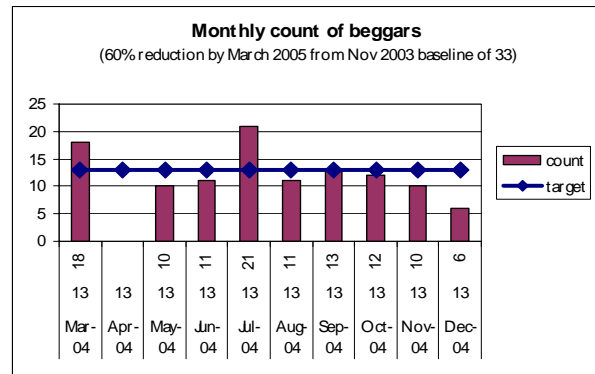
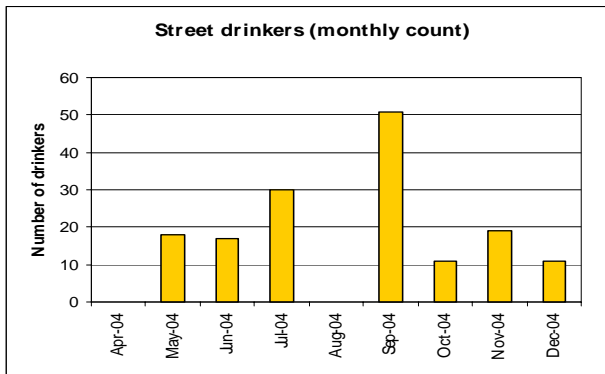
## Key Points

- o Vehicle crime has shown a reduction this quarter with current figures showing a 30.9% reduction against the same period for last year. This reduction is reflected both force wide and nationally, however, vehicle crime still accounts for 10% of all Brighton and Hove recorded crime.
- o Car parks remain a problem with 14% of theft from motor vehicle occurring in a city centre car park (35% of these at NCP North Road and NCP Church Street). A joint initiative with NCP car parks has been successful in targeting car park breaks over the Christmas period. This contributed to no rise in vehicle crime as forecast
- o In 15% of theft from motor vehicles, vans were targeted with tools mainly being stolen which is a rise since last quarter
- o Thefts of motor cycles and scooters account for 17% of all stolen motor vehicles
- o Newly appointed Acquisitive Crime Officer has re-formed the Vehicle Crime Reduction Task group and begun work on action plans

# Anti-Social Behaviour (ASB)

	2003/4 Total	2004/5 Q1	2004/5 Q2	2004/5 Q3	2004/5 Q4
<b>0-17 Year Olds</b>					
New ASBOs	11	8	6	1	
ASBO breaches	7	1	4	16	
Acceptable Behaviour Contracts	38	16	8	8	
<b>18 years +</b>					
New ASBOs	16	16	7	7	
ASBO breaches	9	5	3	7	
Acceptable Behaviour Agreements	14	5	7	4	
<b>Total</b>					
New ASBOs	27	24	13	8	
ASBO breaches	16	6	7	23	
Acceptable Behaviour Contracts	52	21	15	12	

Still awaiting data from RSL (Registered Social Landlords)



## Key Points

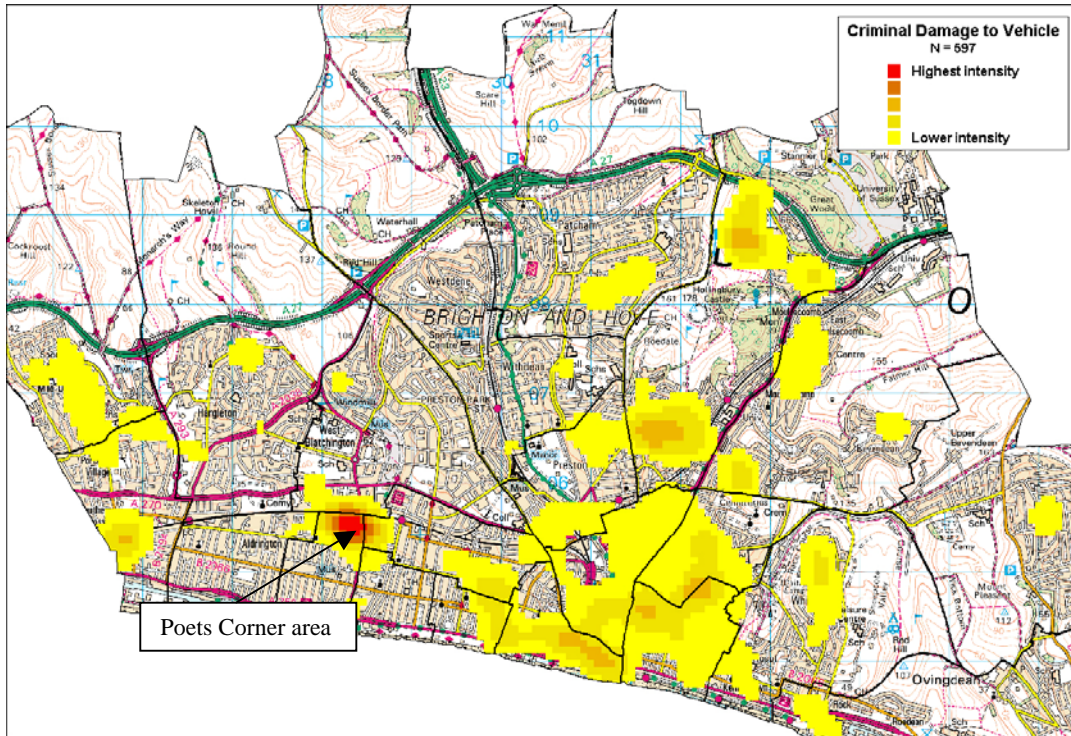
- o For the 5th consecutive month begging numbers are down and street drinking numbers remain seasonally low as expected
- o 3 street drinking and Begging Audits carried out in Quarter 3
- o Extensive and partnership work with the Brighthelm Community Centre in tackling street drinking activity within the grounds
- o Demand led nature of anti-social behaviour action will continue

# Criminal Damage

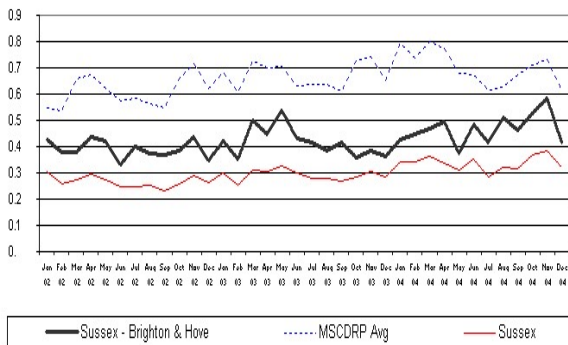
	2002/3 Q4	2003/4 Q1	2003/4 Q2	2003/4 Q3	2003/4 Q4	2004/5 Q1	2004/5 Q2	2004/5 Q3
<b>All Criminal Damage</b>	NK	NK	NK	NK	1384	1461	1254	1420
<b>Criminal Damage to vehicle</b>	NK	NK	NK	NK	626	684	494	619



### Hotspot map showing CD to Vehicles 2004/5 Q3



### Criminal Damage to Dwellings per 1000 pop

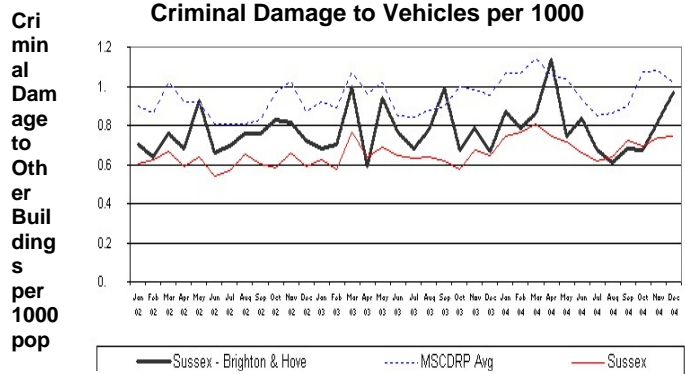


Comparison Chart - Crimes per 1000 Residents Sussex - Brighton & Hove Damage to Dwellings 'Most Similar' CDRPs: 01 Jan 2002 - 31 Dec 2004

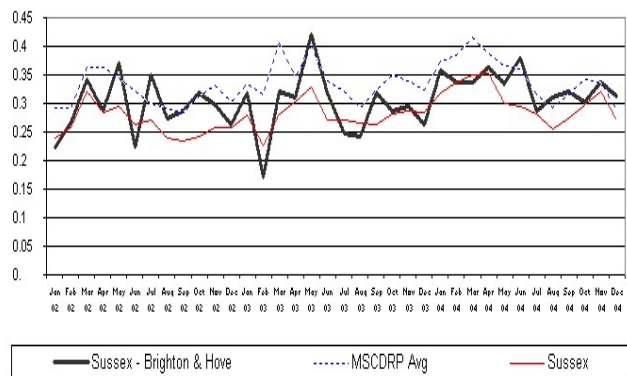
### Key Points

- o Criminal damage accounts for 17% of all reported crime in Brighton and Hove
- o 9% (126) of all criminal damage occurred in the ward of Hollingbury and Stanmer, and 9% in St Peters and North Laine
- o The hotspot area for Criminal Damage to vehicles is around Poets Corner/Clarendon in the ward of Westbourne
- o The hotspot area for Criminal Damage to dwellings is around North Moulsecoomb, Whitehawk and Hollingdean
- o The hotspot area for Criminal Damage to Other buildings (not a dwelling) is the town centre as these offences often take place at a business premises

### Criminal Damage to Vehicles per 1000

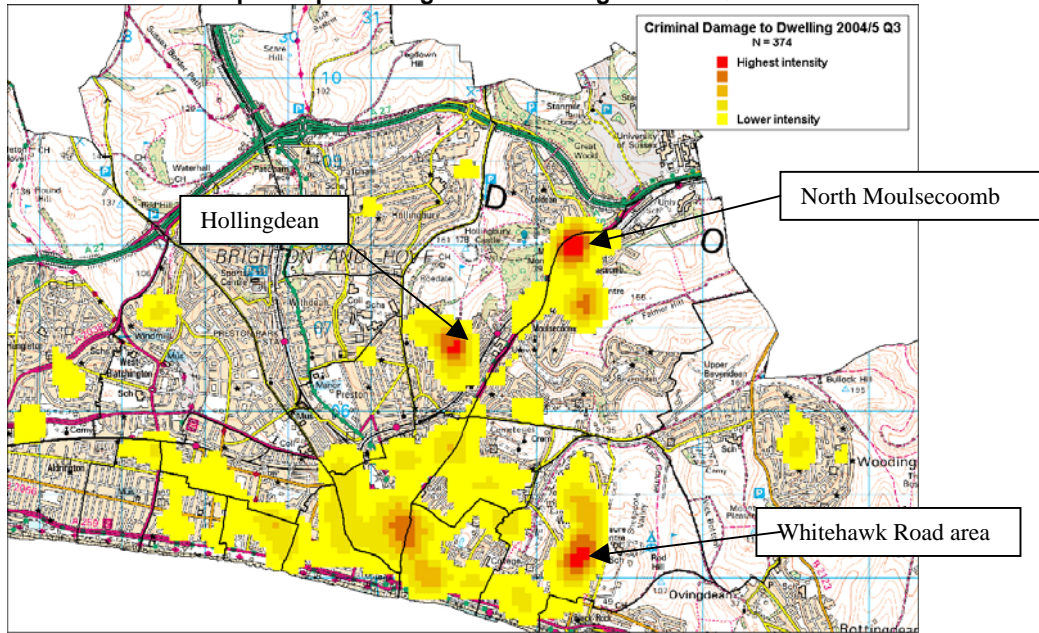


Comparison Chart - Crimes per 1000 Residents Sussex - Brighton & Hove Damage to Other Buildings per 1000 pop 'Most Similar' CDRPs: 01 Jan 2002 - 31 Dec 2004



Comparison Chart - Crimes per 1000 Residents Sussex - Brighton & Hove Damage to Other Buildings 'Most Similar' CDRPs: 01 Jan 2002 - 31 Dec 2004

Hotspot map showing CD to Dwellings 2004/5 Q3

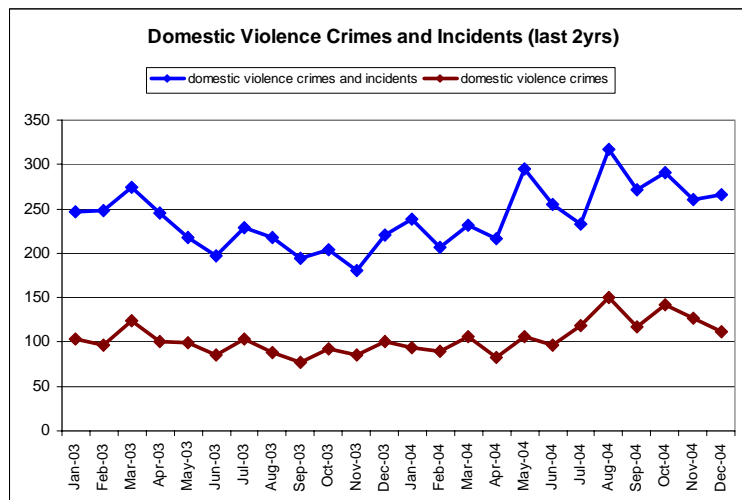


## Domestic Violence (DV)

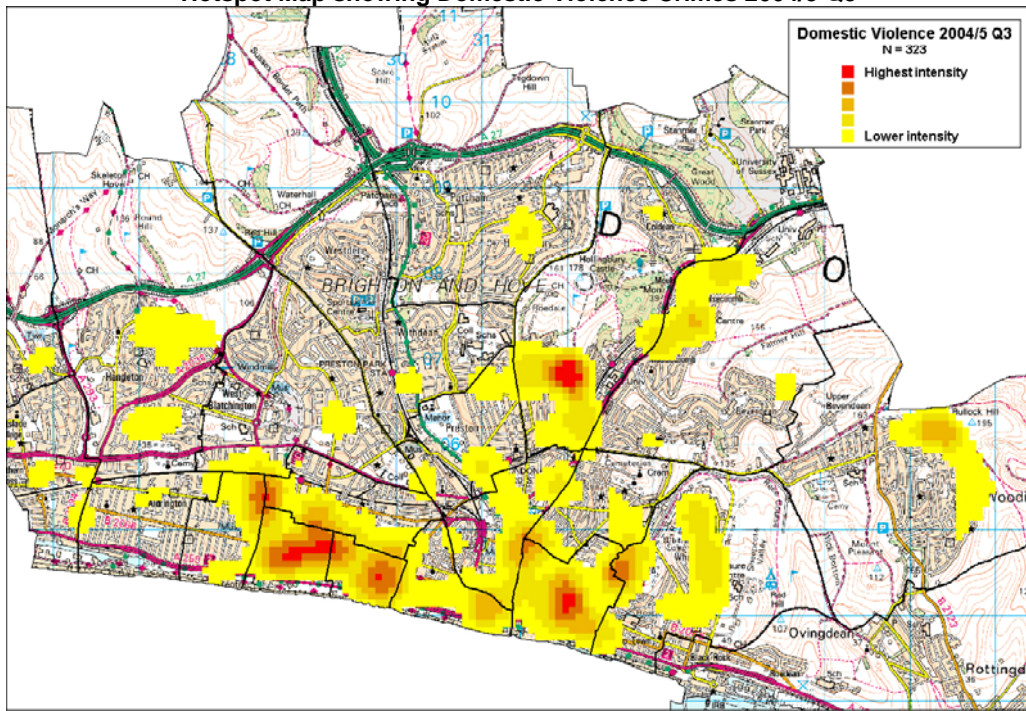
	2002/3 Q4	2003/4 Q1	2003/4 Q2	2003/4 Q3	2003/4 Q4	2004/5 Q1	2004/5 Q2	2004/5 Q3
<b>No of DV Crimes</b>	323	284	268	278	289	286	386	381
<b>No of DV Incidents</b>	445	376	373	327	387	480	435	437
<b>Total</b>	768	660	641	605	676	766	821	815

### Key Points

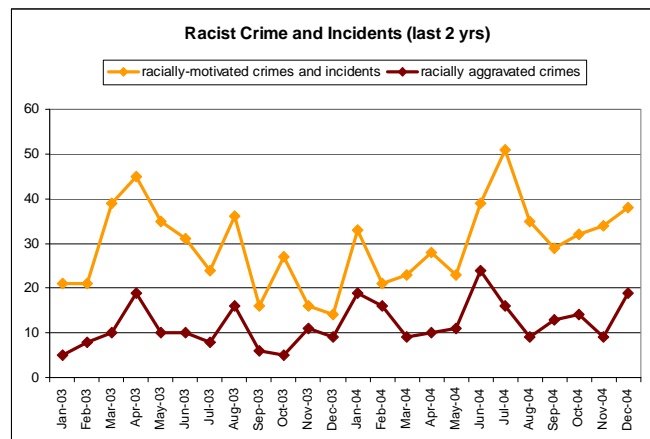
- o Reported Domestic Violence incidents and crimes have slightly decreased since last quarter (by 6 offences) and the hotspot locations remain consistent with the previous quarter
- o The Women's Refuge Programme advocacy service ceased last quarter, but it is not yet apparent how this has affected the number of reported domestic violence offences
- o Conference on the effect of DV on children is being set up with Children and Families Service (CFS), DVF, EB4U, Sussex Police and health care



Hotspot Map showing Domestic Violence Crimes 2004/5 Q3



## Racial Harassment

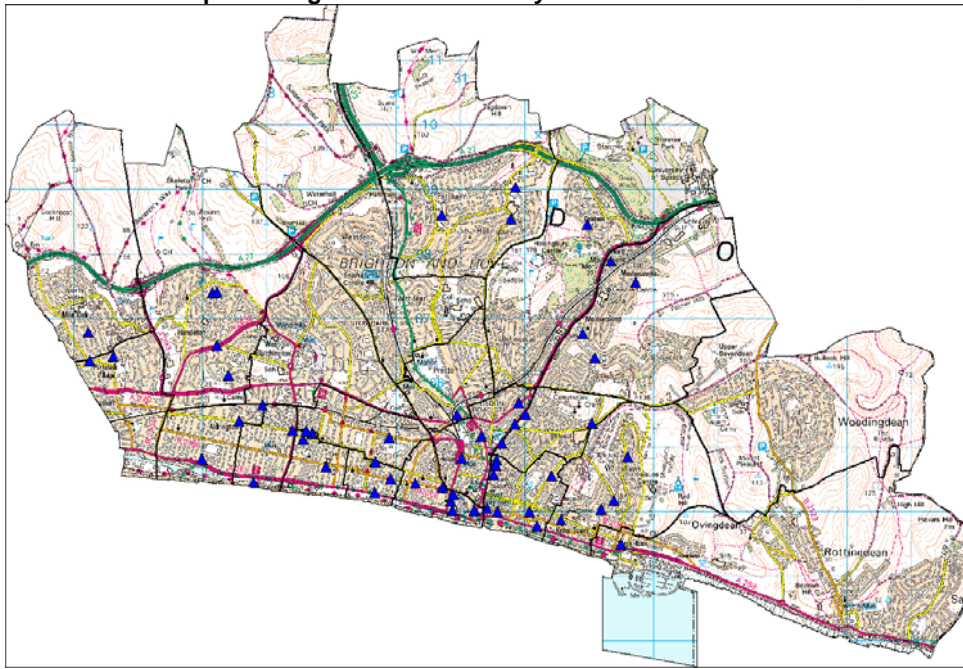


	2002/3 Q4	2003/4 Q1	2003/4 Q2	2003/4 Q3	2003/4 Q4	2004/5 Q1	2004/5 Q2	2004/5 Q3
<b>No. Racist Crime and Incidents</b>	81	109	74	55	77	90	115	105
<b>Racist Incident Report Forms</b>	56	77	42	74	82	86	146	112

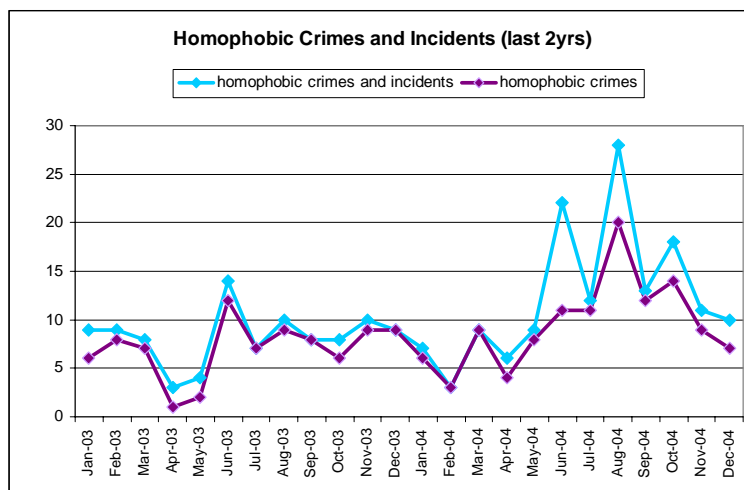
### Key Points

- o 5% of Racist Incident Report have come from agencies other than the police and PCST including B&H Asylum Team, the Chinese Information Pilot and East Sussex County Council
- o Training given this quarter has included YOT, Turner area partnership with future training already planned
- o PCST Racial harassment caseworkers have attended a number of community events including the Holocaust Memorial Service
- o Review currently being undertaken into the Racial Harassment Forum

Point Map showing Racist and Racially Motivated Crimes 2004/5 Q3



## Homophobic/Transphobic Crime and Harassment

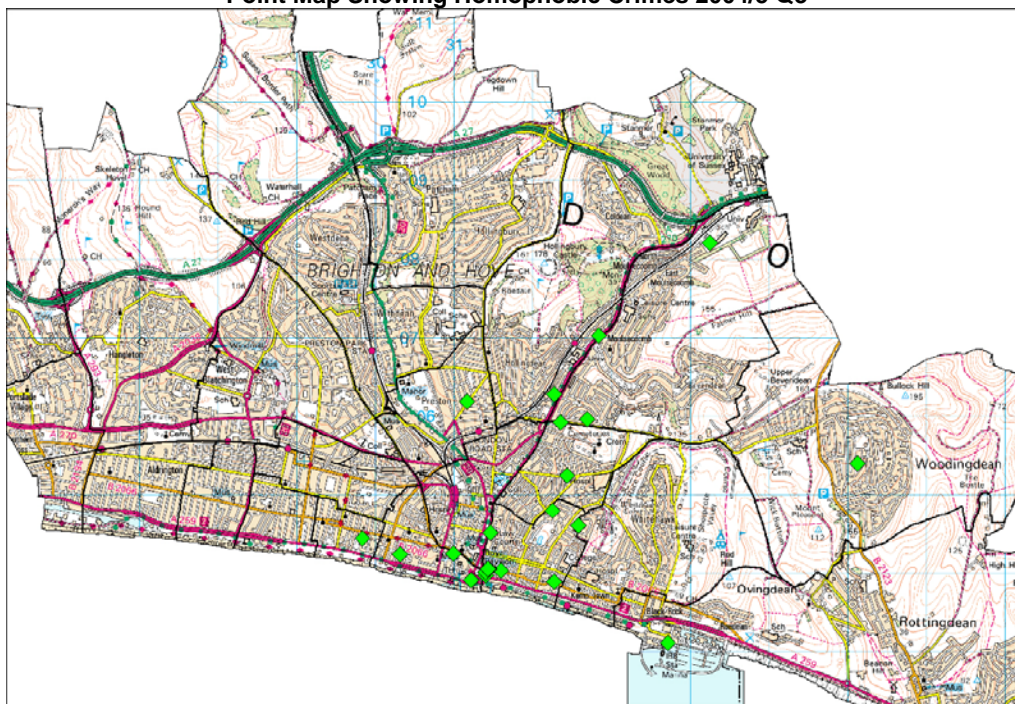


	2002/3 Q4	2003/4 Q1	2003/4 Q2	2003/4 Q3	2003/4 Q4	2004/5 Q1	2004/5 Q2	2004/5 Q3
<b>Homophobic Crimes and Incidents</b>	26	21	24	27	19	37	53	40

**Key Points**

- o The number of reported homophobic incidents has reduced by 24.5% this quarter
- o The hotspot location for homophobic incidents remains as St James Street
- o Continuing work with PCSOs, the Police and Voluntary organisations presenting the 'True Vision' reporting packs
- o New LGBT Officer has started employment within the PCST
- o Second phase of 'True Vision' self reporting forms launch to LGBT retail and licensed businesses

**Point Map Showing Homophobic Crimes 2004/5 Q3**



## Notes

### CDRP Family Group

The CDRP most similar family group is defined according to a set of demographic characteristics, which are linked to the propensity for crime and disorder. Family group data are unofficial until the July after the close of each financial year and are indicative only with the most recent groupings revised in April 2004. The purpose of these groups is to provide a means by which performance of an individual CDRP can be compared with other similar CDRPs.

Other CDRPs in Brighton and Hove's Group are; Wandsworth, Eastbourne, Cheltenham, Bristol, Exeter, Hastings, Plymouth, Reading, Portsmouth, Lincoln, Newcastle-upon-Tyne, Southampton, Leeds and Norwich.

### CDRP Family Ranking

The lower the ranking, the better the performance. This measure is used by the Home Office to scrutinise CDRP performance.

### Trend Graphs

Where comparative data is available, the Brighton & Hove trend is shown together with the Family average and the Sussex Police Force average and data is presented according to the number per 1000 resident population or household. Where CDRP data is not available, trend data is presented from locally collated sources.

### CADDIE Data Source

(Used for mapping and analysis) CADDIE receives raw data from partner agencies that is sanitised and geo-coded before being analysed. Any record with an insufficient or partial address (or Beat 0) will be lost and so CADDIE cannot be used to produce performance data but should be seen as 'operational'. For further information go to [www.caddie.gov.uk](http://www.caddie.gov.uk)

### Hotspot Map

Hotspot maps are used to aggregate high volumes of crime and simplify the display of large amounts of crime data. Hotspots show where there are clusters of offences and help identify where resources should be targeted.

### Thematic Map

A thematic map is helpful in showing the distribution of crimes by ward area. The higher the count of offences, the darker shade the ward will be coloured.

### Point Data Map

Points are used to display the location and distribution of an offences type. The mapping software automatically aggregates overlapping points into one so that e.g. one point may represent five offences.