



Community Safety and Crime Reduction Strategy 2002/5

Performance Report

**1st January 2005 to 31st March 2005
2004/5 Quarter 4**

Aim

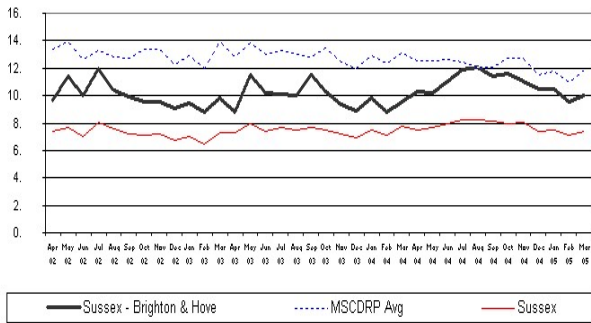
This report has been produced to inform the Community Safety Forum of performance in the field of crime reduction within the current Community Safety Strategy priority areas. It is an edited version of the Performance and Activity Report produced for the RAP/DAAT Quarterly meeting.

Method

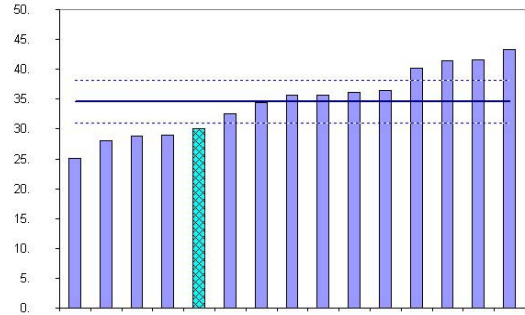
The Performance and Activity Report is informed by; Sussex Police Crime Performance figures, Sussex Police Brighton and Hove Division Tactical and Strategic Assessments, Community Safety Action Groups and Strategic Groups, the Community Safety Team and open sources.

Total Crime

Total Crimes per 1000 population



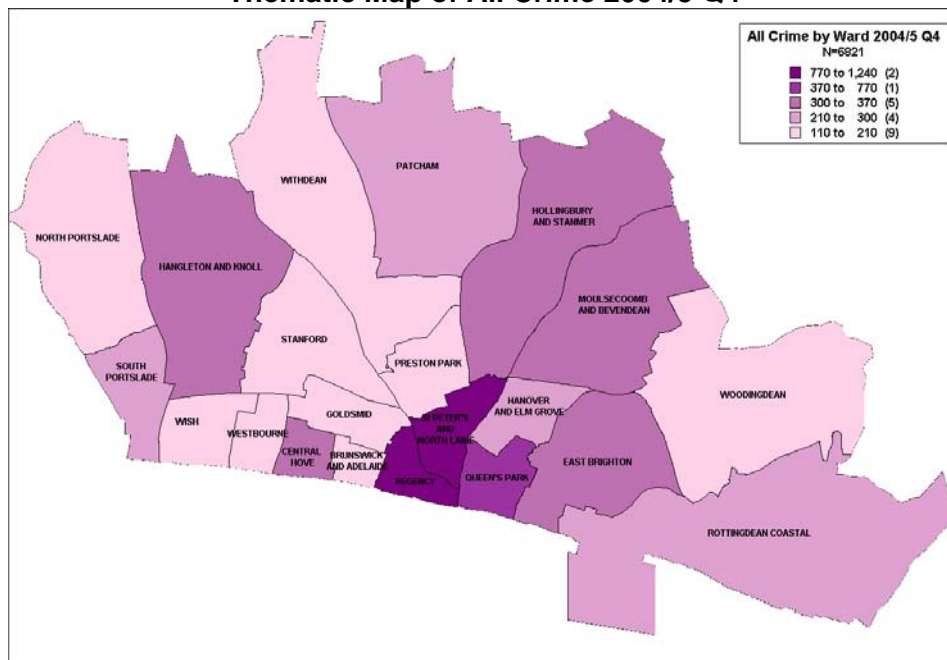
Total Crime per 1000 pop against B&H's Most Similar CDRPs



Low ranking = good performance

	2003/4 Q1	2003/4 Q2	2003/4 Q3	2003/4 Q4	2004/5 Q1	2004/5 Q2	2004/5 Q3	2004/5 Q4
Total Crime	7674	7969	7172	7082	7844	8942	8304	7577
Rank out of 15 most similar CDRPs	N/K	N/K	N/K	2 nd	4 th	8 th	7 th	5 th

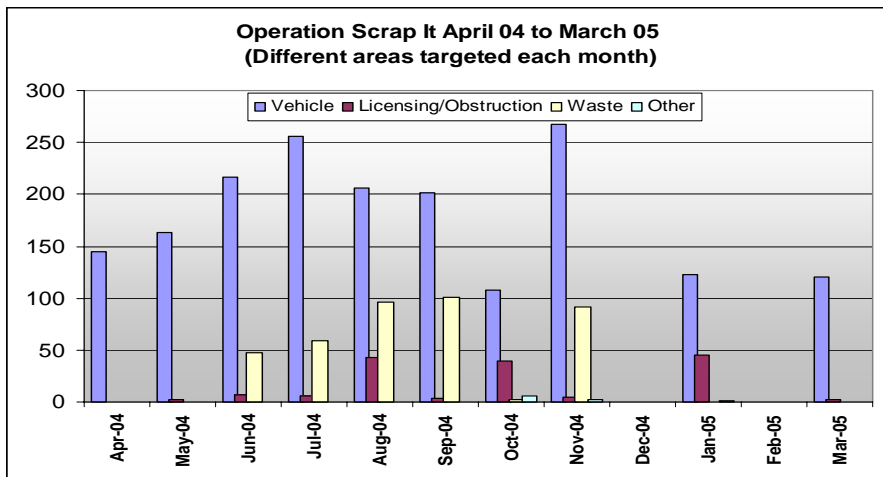
Thematic Map of All Crime 2004/5 Q4



Key Points

- o Total crime performance has improved since last quarter with Brighton & Hove gaining two places when ranked against the most similar CDRPs
- o The effects of NCRS recording can still be seen with total crime figures
- o Although below target, detections have improved this quarter reaching a rate of 22.2%
- o The hotspot location for all crime remains the town centre

Quality Of Life



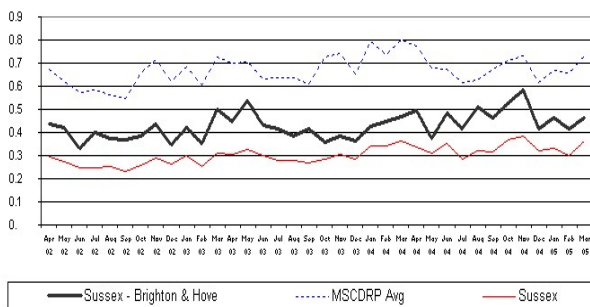
Key Points

- o Monthly vehicle action days targeting abandoned vehicles (part of Operation Crackdown) have been taking place over the last three months
- o Operation Scrap It (street level environmental issues) targeted Brighton city centre in January and Queens Park, Craven Vale and Kemptown in March

Criminal Damage

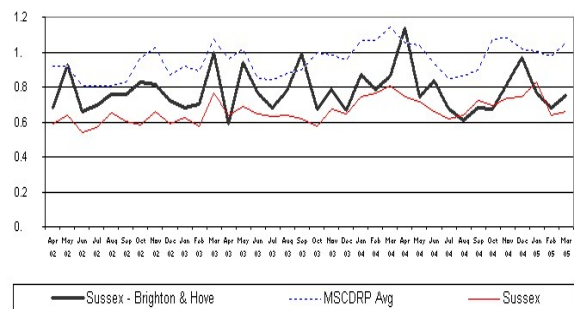
	2002/3 Q4	2003/4 Q1	2003/4 Q2	2003/4 Q3	2003/4 Q4	2004/5 Q1	2004/5 Q2	2004/5 Q3
All Criminal Damage	1416	1314	1190	1384	1461	1254	1420	1390
Criminal Damage to vehicle	NK	NK	NK	626	684	494	619	555

Criminal Damage to Dwellings per 1000 pop



Comparison Chart - Crimes per 1000 Residents Sussex - Brighton & Hove Damage to Dwellings 'Most Similar' CDRPs 01 Apr 2002 - 31 Mar 2005

Criminal Damage to Vehicles per 1000



Comparison Chart - Crimes per 1000 Residents Sussex - Brighton & Hove Damage to Vehicles 'Most Similar' CDRPs 01 Apr 2002 - 31 Mar 2005

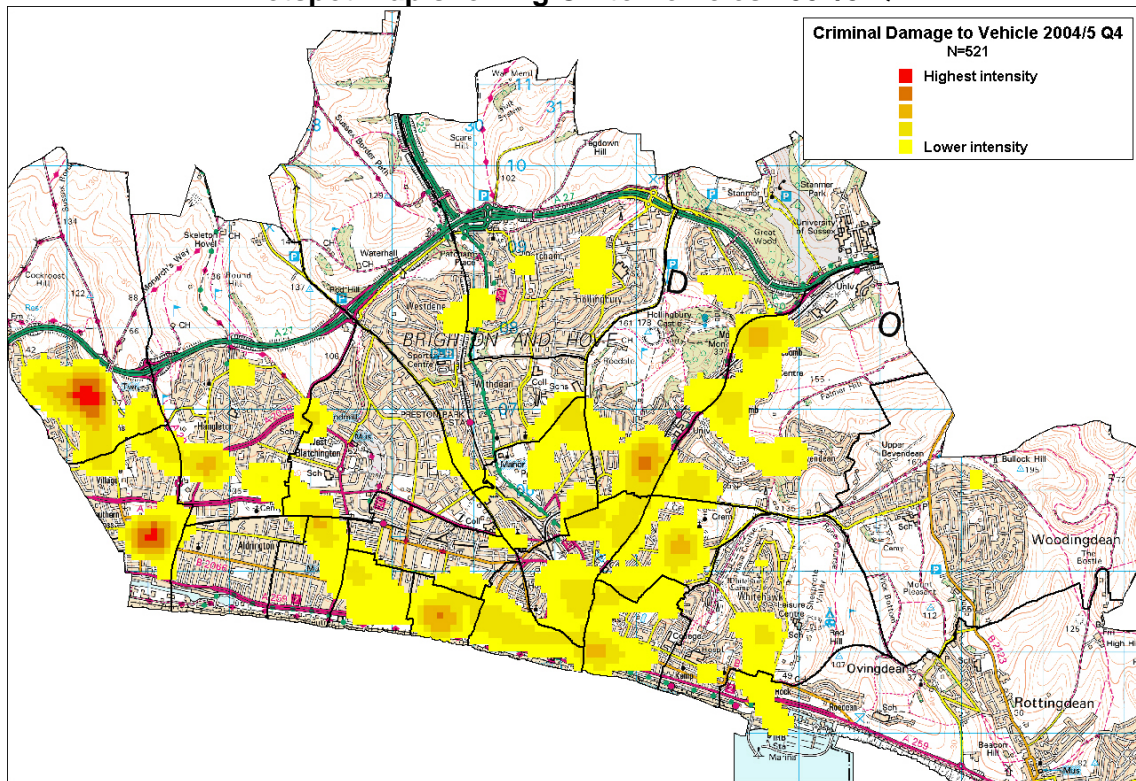
Key Points

- o All criminal damage makes up 18% of all crime in Brighton & Hove this quarter
- o The hotspots for CD to vehicles are around Chalky Road in North Portslade, and around Vale

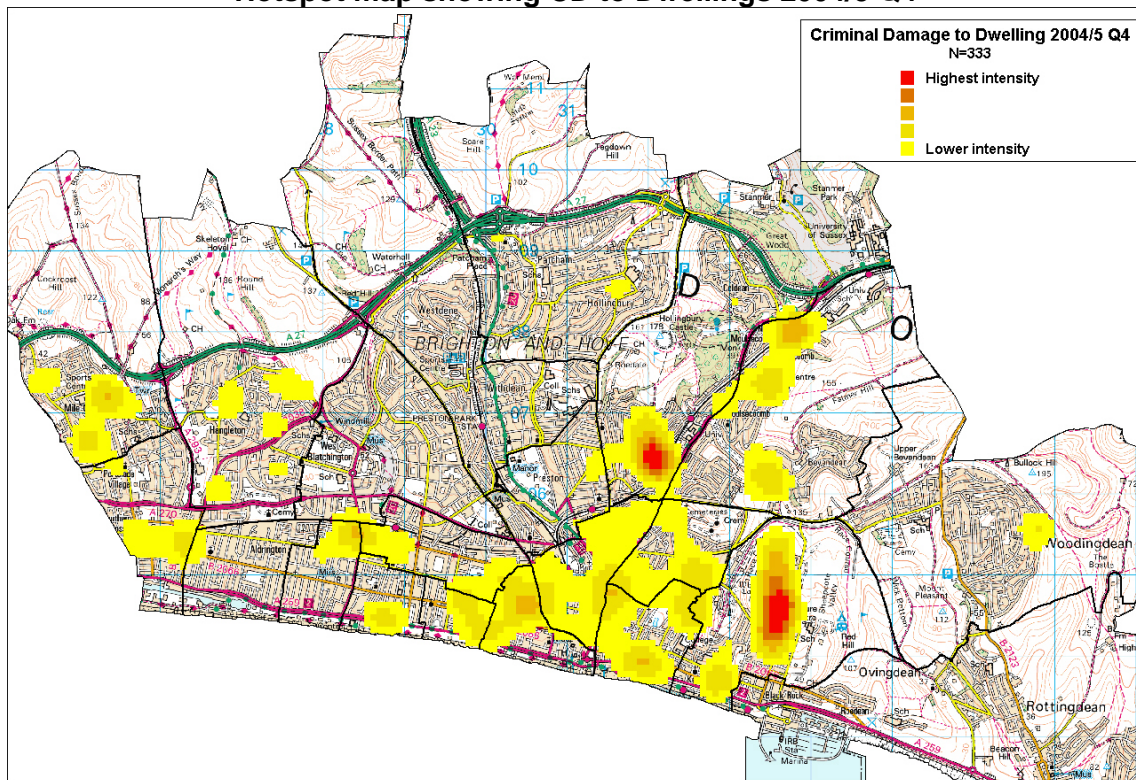
Road in South Portslade

- o The hotspots for CD to dwellings are around The Linkway in Hollingdean and Whitehawk Way in Whitehawk
- o Recent activities include improved links with East Sussex Fire and Rescue Arson Reduction Team

Hotspot map showing CD to Vehicles 2004/5 Q4

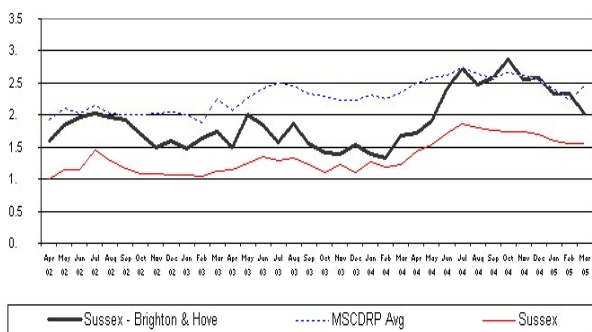


Hotspot map showing CD to Dwellings 2004/5 Q4



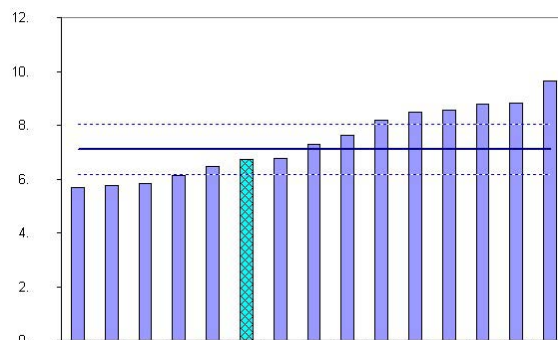
All Violent Crime

All Violent Crime per 1000 Population



Comparison Chart - Crimes per 1000 Residents Sussex - Brighton & Hove Violent Crime 'Most Similar' CDRPs 01 Apr 2002 - 31 Mar 2005

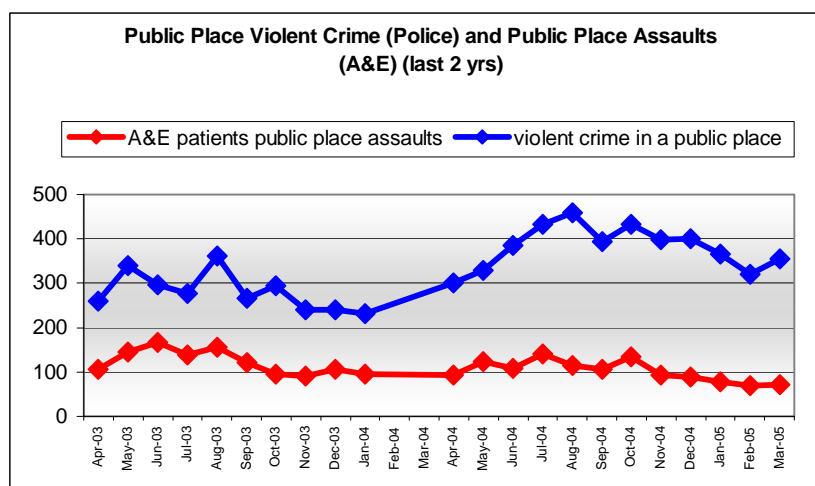
All Violent Crime per 1000 pop compared to Most Similar CDRPs



Low ranking = good performance

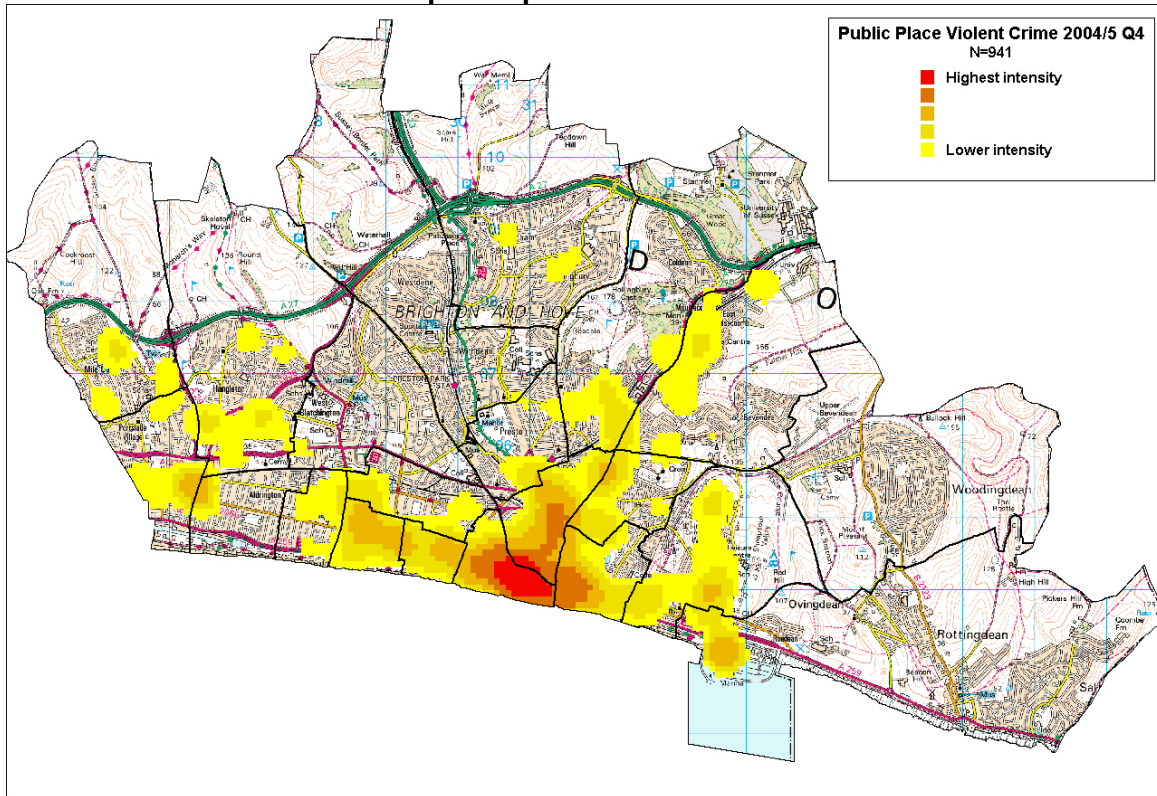
	2003/4 Q1	2003/4 Q2	2003/4 Q3	2003/4 Q4	2004/5 Q1	2004/5 Q2	2004/5 Q3	2004/5 Q4
CDRP ranking all violent crime	N/K	N/K	N/K	1 st	3 rd	6 th	8 th	6 th

Public Place Violent Crime



	2003/4 Q1	2003/4 Q2	2003/4 Q3	2003/4 Q4	2004/5 Q1	2004/5 Q2	2004/5 Q3	2004/5 Q4
No. of PPVC	897	905	775	694	1015	1287	1232	1039
No. of Public Place Assaults (A&E data)	417	414	293	271	324	362	317	219

Hotspot Map of PPVC 2004/5 Q4

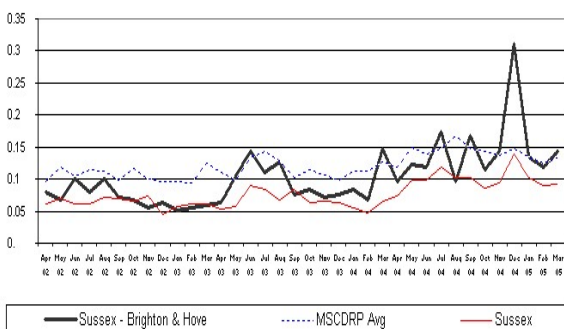


Key Points

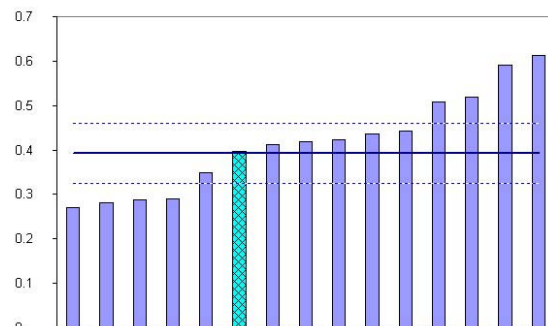
- Public place violent crime end of year figures show a 39.4% increase since last year, this figure being strongly influenced by NCRS compliance
- The city centre dispersal order has proved a success in targeting youth disorder
- The Security Industry Act has been implemented locally since 28th February in respect of door supervisors

Sexual Offences

Sexual Offences per 1000 population



Sexual offences per 1000 pop compared to Most Similar CDRPs



Low ranking=good performance

	2003/4 Q1	2003/4 Q2	2003/4 Q3	2003/4 Q4	2004/5 Q1	2004/5 Q2	2004/5 Q3	2004/5 Q4
No. of Sexual Offences	78	79	58	75	45	151	116	106
CDRP Ranking	U/K	U/K	U/K	U/K	U/K	U/K	U/K	6 th

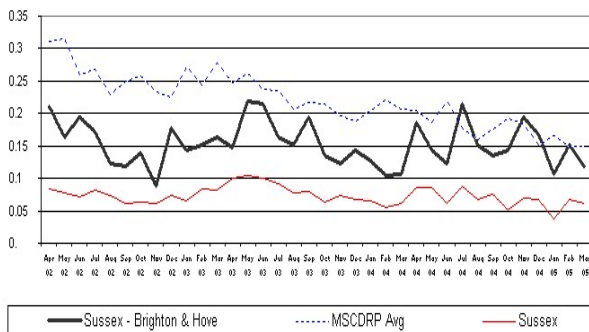
Key Points

- o The multi-agency Spiked team has continued with publicity including a number of articles appearing in the local press
- o The violent crime task group is to set up a late night public place 'safe haven' where people in difficulty can get help with e.g. transport

Robbery

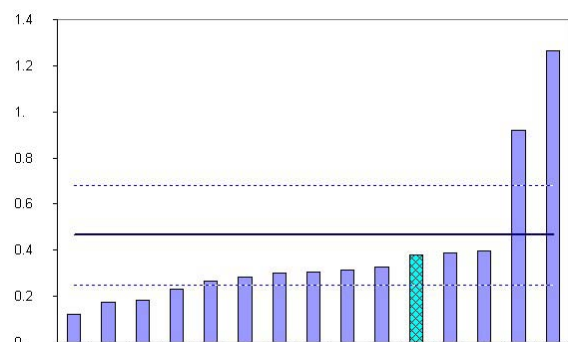
	2003/4 Q1	2003/4 Q2	2003/4 Q3	2003/4 Q4	2004/5 Q1	2004/5 Q2	2004/5 Q3	2004/5 Q4
No of All Robberies	146	128	101	85	118	121	128	103
Rank out of 15 most similar CDRPs	U/K	U/K	U/K	7 th	8 th	12 th	12 th	11 th

Robberies per 1000 Population



Comparison Chart - Crimes per 1000 Residents Sussex - Brighton & Hove Robbery Most Similar CDRP: 01 Apr 2002 - 31 Mar 2005

Robberies per 1000 pop Compared to Most Similar CDRPs



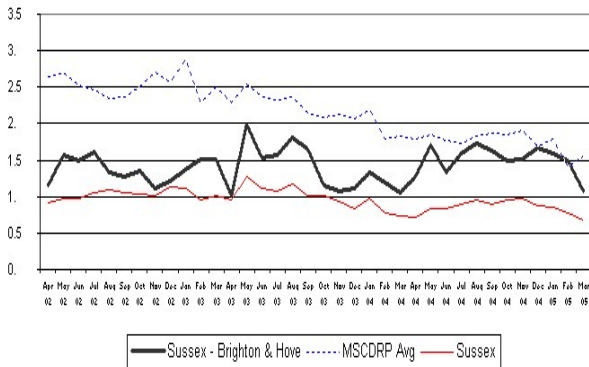
Low ranking = good performance

Key Points

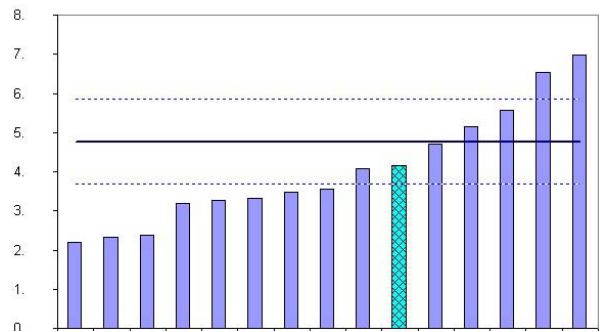
- o Robberies have reduced this quarter and Brighton & Hove's position against its most similar CDRPs have moved up one place to 11th
- o The hotspot for street robbery remains the city centre and esplanade
- o Police operations will continue to focus on robbery hotspots using high profile seafront cycle patrols

Domestic Burglary

Domestic Burglary per 1000 households



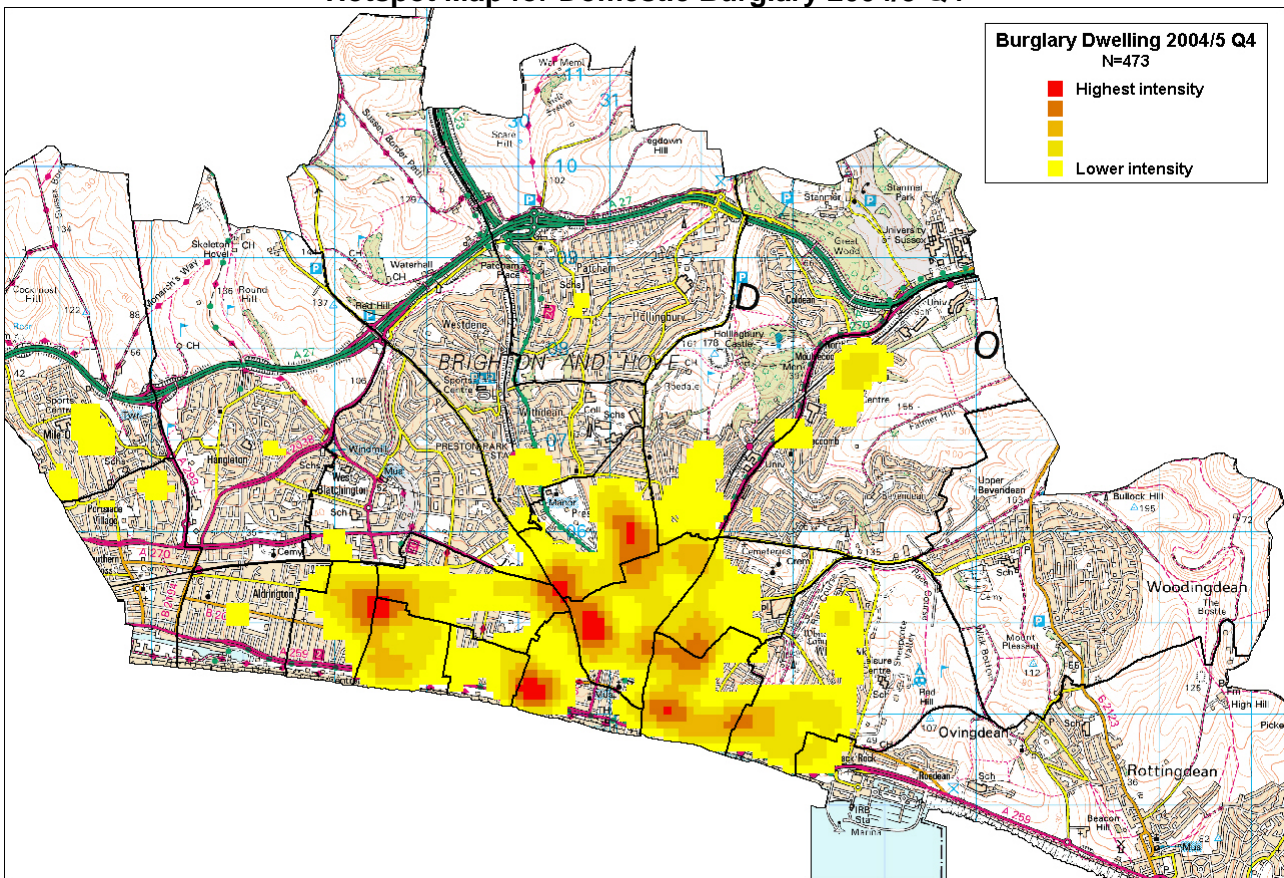
DB per 1000 households compared to Most Similar CDRPs



Low ranking = good performance

	2003/4 Q1	2003/4 Q2	2003/4 Q3	2003/4 Q4	2004/5 Q1	2004/5 Q2	2004/5 Q3	2004/5 Q4
No of Domestic Burglaries	534	593	394	421	523	573	550	491
Rank out of 15 most similar CDRPs	N/K	N/K	N/K	8 th	10 th	10 th	9 th	10 th

Hotspot Map for Domestic Burglary 2004/5 Q4



Key Points

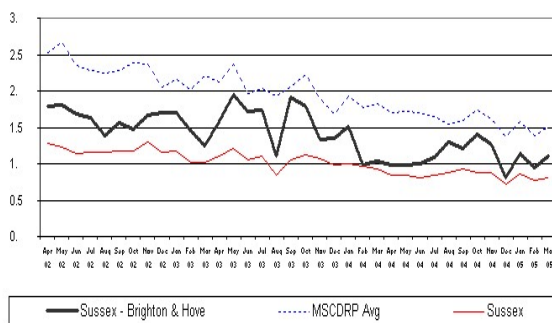
- o Year end figures show an increase of 10.3% for burglary in Brighton & Hove
- o There are a number of hotspot locations this quarter situated around the areas of:
 - o Blatchington Road, Hove
 - o Silwood Street
 - o Seven Dials
 - o Stanford Avenue
 - o St James' Street

Many crime reduction and prevention actions have taken place, including

- o A trickster artifice burglary musical has been performed to 200 elderly people in Brighton & Hove
- o A student crime e-newsletter has been sent out offering tips on preventing burglary
- o Burglary prevention literature is now distributed to all victims of burglary
- o A Smartwater campaign has been carried out across the city in burglary hotspot areas

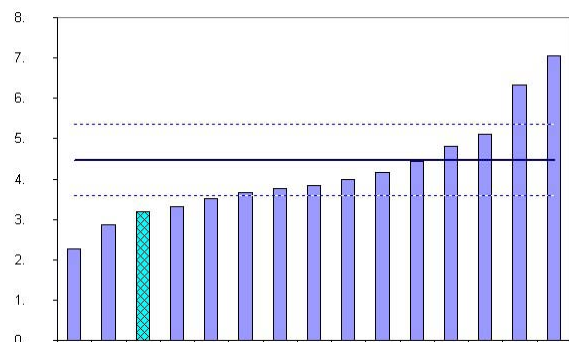
Vehicle Crime

Vehicle Crime per 1000 Population



Comparison Chart - Crimes per 1000 Residents: Sussex - Brighton & Hove: Vehicle Crime (excluding Vehicle Interference) Most Similar CDRPs: 01 Apr 2002 - 31 Mar 2005

Comparison with Most Similar CDRP



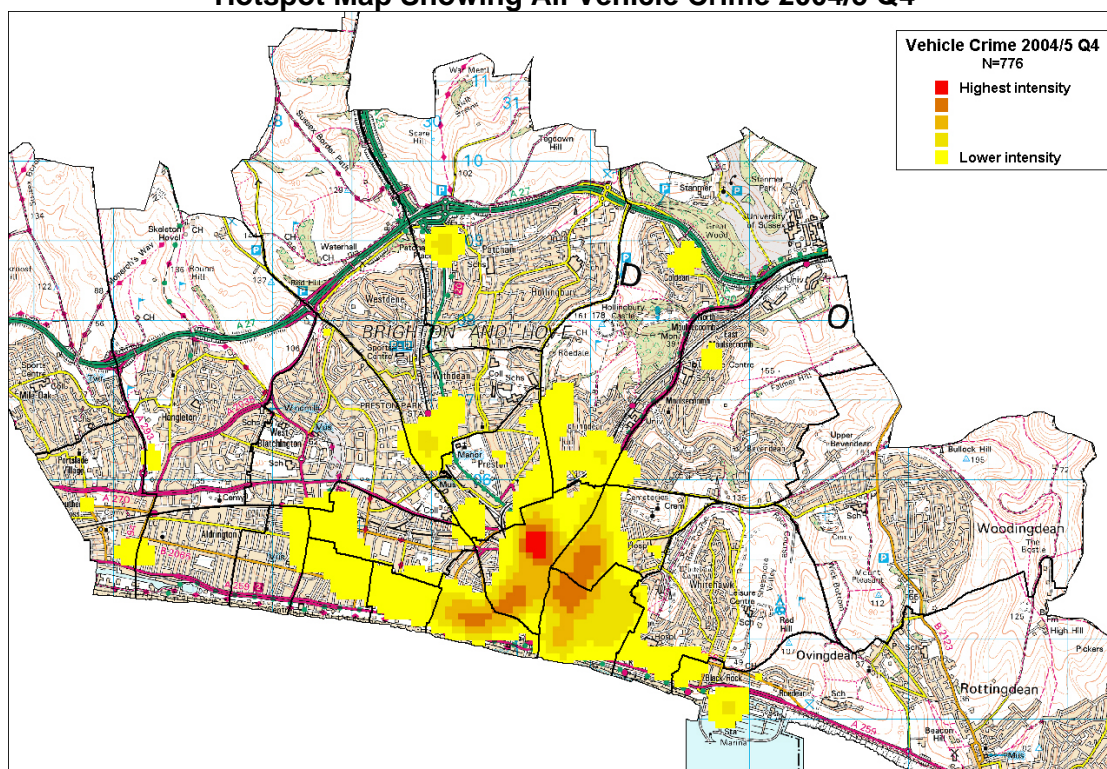
Low ranking = good performance

	2003/4 Q1	2003/4 Q2	2003/4 Q3	2003/4 Q4	2004/5 Q1	2004/5 Q2	2004/5 Q3	2004/5 Q4
No of Vehicle Crimes	1318	1192	1126	887	754	897	868	808
Rank out of 15 most similar CDRPs	N/K	N/K	N/K	3 rd	2 nd	2 nd	6 th	3 RD

Key Points

- o Vehicle crime is below target achieving a 26.4% reduction this year
- o The hotspot location for vehicle offences this quarter is the London Road Car Park
- o Intelligence on stolen vehicles is being passed on to car parks and parking attendants
- o Crime prevention advice is now displayed on all car parking tickets
- o Targeted direct patrol activity has been taking place in city centre car parks
- o A trailer will be used in vehicle crime hotspots manned by PCSOs (Police Community Support Officers) to highlight to residents how to keep vehicles secure

Hotspot Map Showing All Vehicle Crime 2004/5 Q4

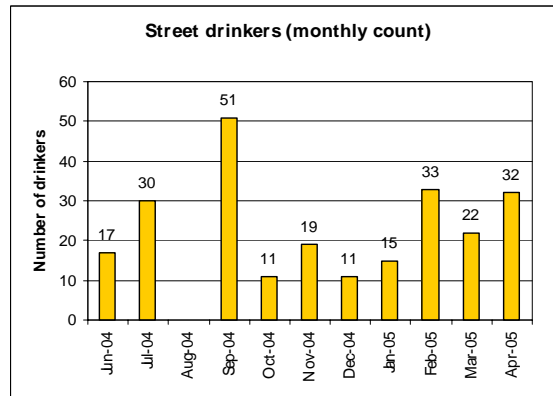
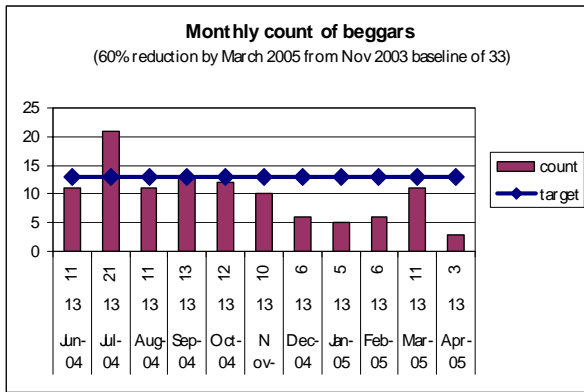


Anti-Social Behaviour (ASB)

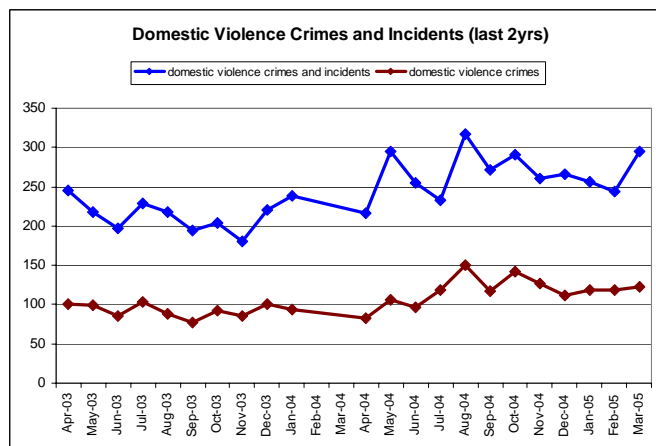
	2003/4 Total	2004/5 Q1	2004/5 Q2	2004/5 Q3	2004/5 Q4	2004/05 Total
0-17 Year Olds						
New ASBOs	11	8	6	1	2	17
ASBO breaches	7	1	4	16	14	35
Acceptable Behaviour Contracts	38	16	8	8	13	45
18 +						
New ASBOs	16	16	7	7	0	30
ASBO breaches	9	5	3	7	18	33
Acceptable Behaviour Contracts	14	5	7	4	8	24
Total						
New ASBOs	27	24	13	8	2	47
ASBO breaches	16	6	7	23	32	68
Acceptable Behaviour Contracts	52	21	15	12	21	69

Key Points

- o A 90% begging reduction target has been achieved which surpassed the official reduction objective of 60%
- o 'It's your call', 0845 605 22 22 Project has generated over 80 reports of ASB within a 4 week period, which has placed an overwhelming demand on ASB Caseworkers
- o A PCSO (Police Community Support Officer) has been seconded to the ASB team to assist with neighbourhood and hotspot working



Domestic Violence (DV)

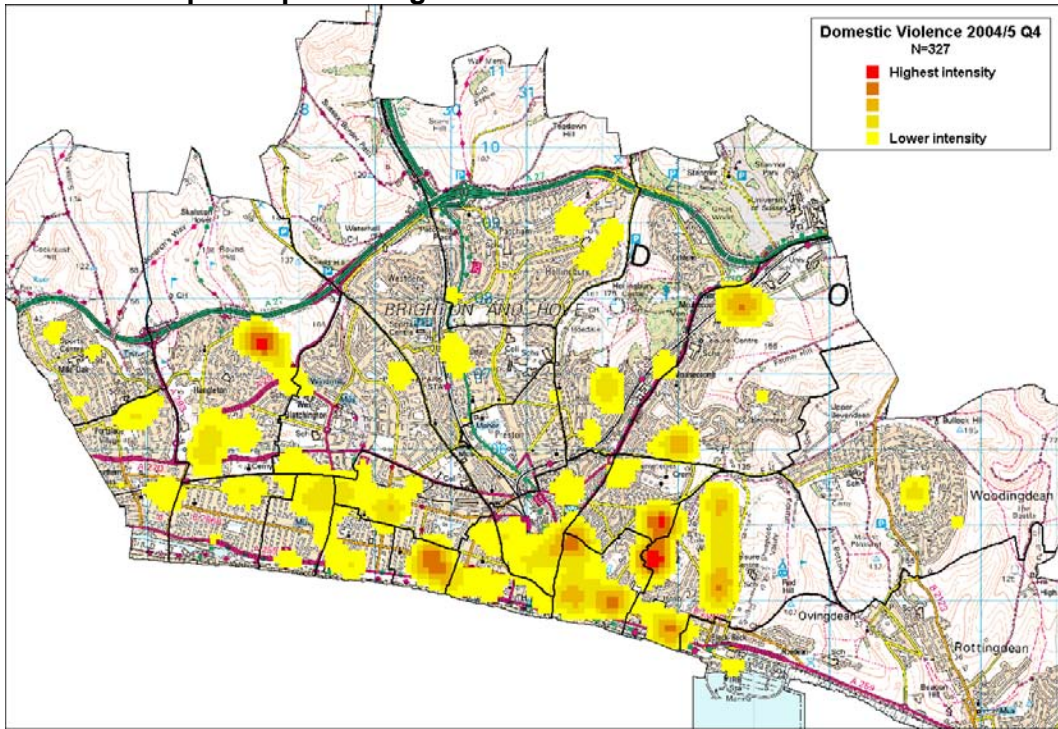


	2003/4 Q1	2003/4 Q2	2003/4 Q3	2003/4 Q4	2004/5 Q1	2004/5 Q2	2004/5 Q3	2004/5 Q4
No of DV Crimes	284	268	278	289	286	386	381	373
No of DV Incidents	376	373	327	387	480	435	437	434
Total	660	641	605	676	766	821	815	807

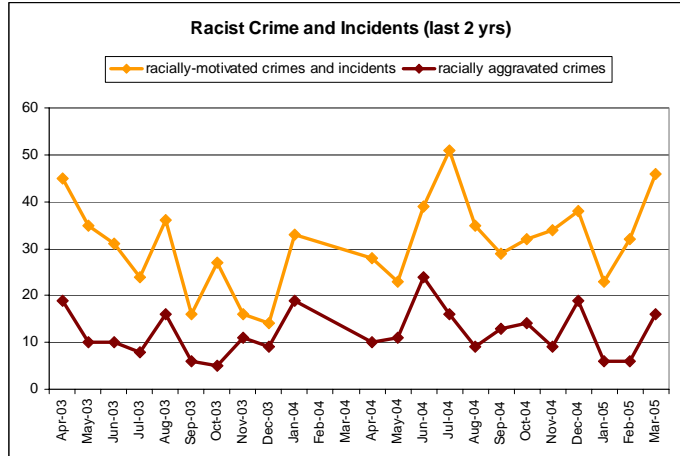
Key Points

- o The hotspots locations for domestic violence are in Hangleton and Whitehawk with the Norfolk Square hotspot still apparent
- o There has been joint working with LGBT partners to address domestic violence within LGBT relationships
- o 'Safeguarding Children Against Domestic Violence' conference is to take place on 6th May
- o A teaching pack for Key Stage 4 pupils is to be developed for raising awareness of Domestic Violence in schools

Hotspot Map showing Domestic Violence Crimes 2004/5 Q4



Racial Harassment

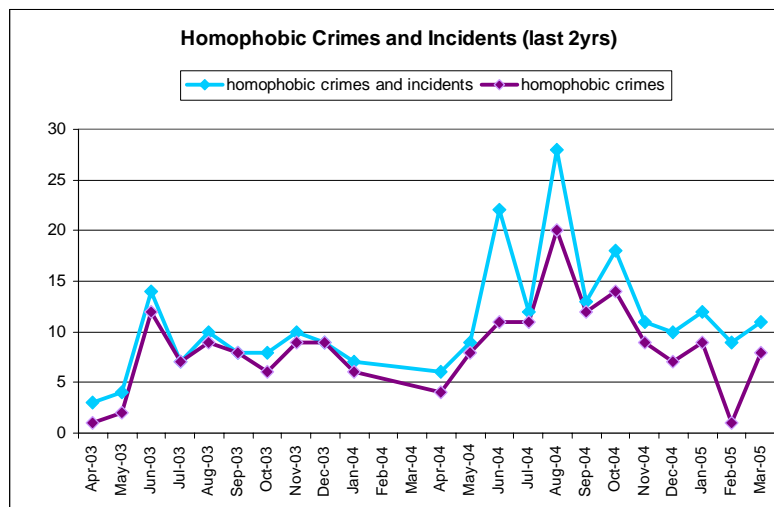


	2003/4 Q1	2003/4 Q2	2003/4 Q3	2003/4 Q4	2004/5 Q1	2004/5 Q2	2004/5 Q3	2004/5 Q4
No. Racist Crimes and Incidents (Ssx Police)	109	74	55	77	90	115	104	101
Racist Incident Report Forms	77	42	74	82	86	146	113	84

Key Points

- o 66% of Racist Incident Report Forms were referred from the Police
- o The hotspot location for racist offences is the town centre with offences spread throughout the city
- o Regular surgeries have been conducted at the Milwood Centre
- o Training sessions have been conducted with YOT, YMCA hostels and two schools with further training planned at a number of local schools
- o Links have been forged and a presentation given to the Afghanistan community

Homophobic/Transphobic Crime and Harassment



	2003/4 Q1	2003/4 Q2	2003/4 Q3	2003/4 Q4	2004/5 Q1	2004/5 Q2	2004/5 Q3	2004/5 Q4
Homophobic Crimes and Incidents	21	24	27	19	37	53	39	32

Key Points

- o The hotspot location for reported offences is around St James’s Street with 64% of police recorded crimes occurring in this area
- o Increasing reporting opportunities has been worked on by holding surgeries in community and LGBT venues to increase trust and confidence amongst communities
- o There has been an increased focus on vulnerable and under engaged groups within the LGBT community, particularly those with mental health issues, young people and low educational attainment.
- o Partnership work has taken place with the DAAT (Drug and Alcohol Action Team) to target substance misuse in the LGBT community
- o The second phase of ‘True Vision’ is to be launched to LGBT retailers and licensed businesses

Notes

CDRP Family Group

The CDRP most similar family group is defined according to a set of demographic characteristics, which are linked to the propensity for crime and disorder. Family group data are unofficial until the July after the close of each financial year and are indicative only. The current groupings have been in place in April 2004. The purpose of these groups is to provide a means by which performance of an individual CDRP can be compared with other similar CDRPs. Other CDRPs in Brighton & Hove's Group are: Wandsworth, Eastbourne, Cheltenham, Bristol, Exeter, Hastings, Plymouth, Reading, Portsmouth, Lincoln, Newcastle-upon-Tyne, Southampton, Leeds and Norwich.

CDRP Family Ranking

The CDRP ranking graphs show an overall count of offences per 1000 population (households for domestic burglary) for Brighton & Hove (shaded) compared to those in the CDRP family group. The lower the ranking, the better the performance. This measure is used by the Home Office to scrutinise CDRP performance.

Trend Graphs

Where comparative data is available, the Brighton & Hove trend is shown together with the Family average and the Sussex Police Force average and data is presented according to the number per 1000 resident population or household. Where CDRP family data are not available, trend data are presented from locally collated sources.

CADDIE Data Source

(Used for mapping and analysis) CADDIE receives raw data from partner agencies that is sanitised and geo-coded before being analysed. Any record with an insufficient or partial address (or Beat 0) will be lost and so CADDIE cannot be used to produce performance data but should be seen as 'operational'. For further information go to www.caddie.gov.uk

Hotspot Map

Hotspot maps are used to aggregate high volumes of crime and simplify the display of large amounts of crime data. Hotspots show where there are clusters of offences and help identify where resources should be targeted.

Thematic Map

A thematic map is helpful in showing the distribution of crimes by ward area. The higher the count of offences, the darker shade the ward will be coloured.

Point Data Map

Points are used to display the location and distribution of an offences type. The mapping software automatically aggregates overlapping points into one so that e.g. one point may represent five offences.