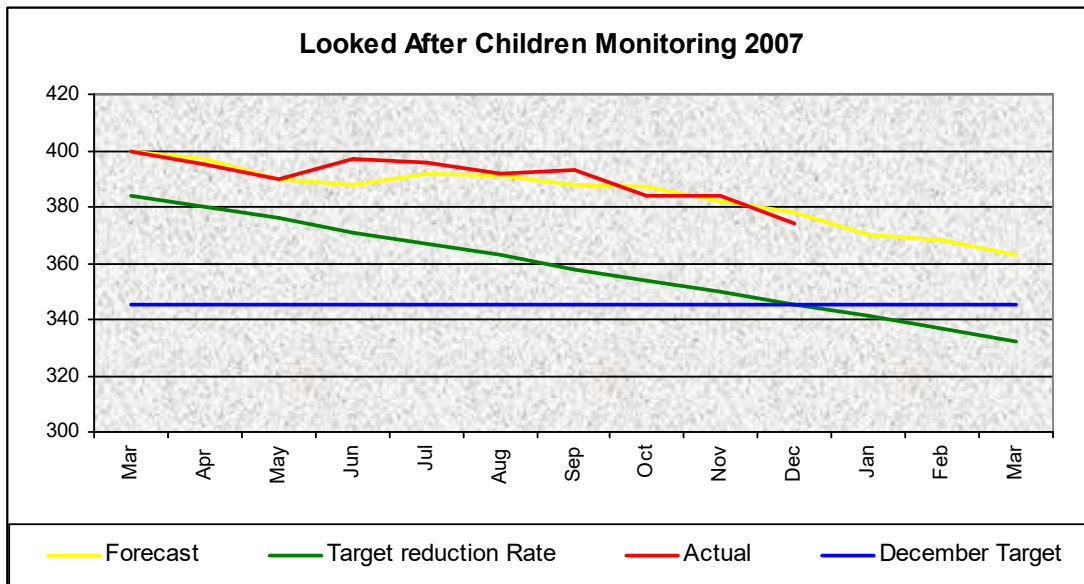


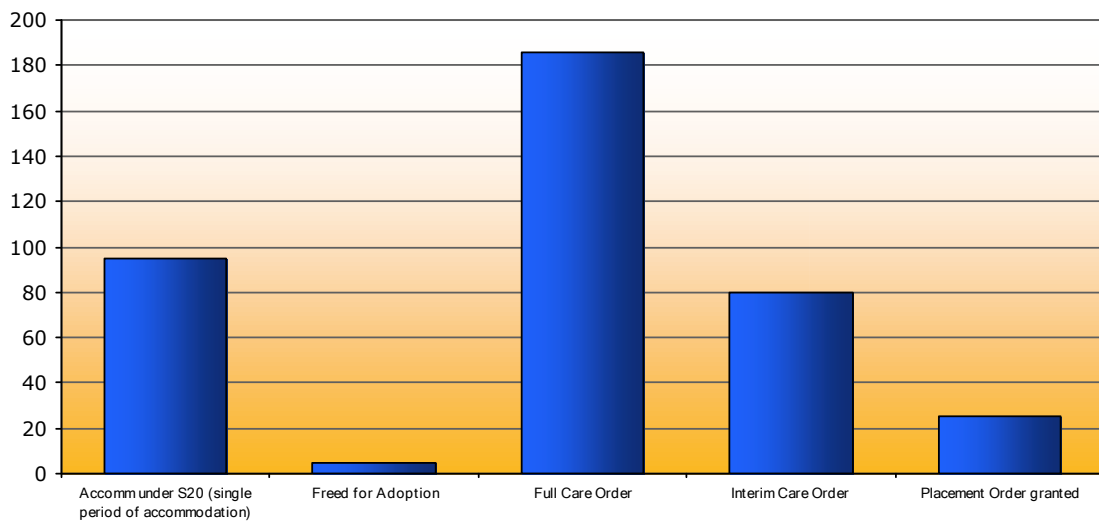
### APPENDIX 3: Baseline Analysis.

CiC numbers are as follows:

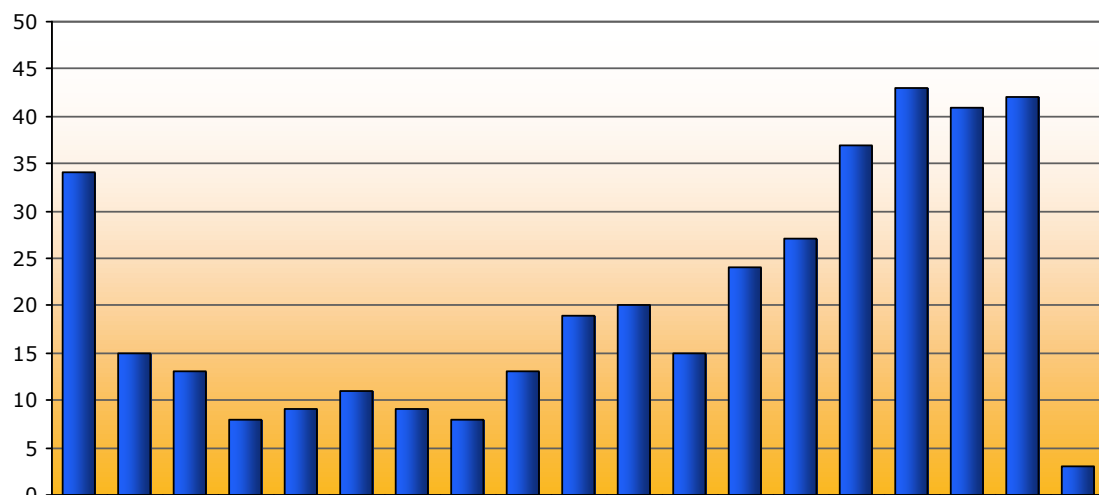
	Mar	Apr	May	Jun	Jul	Aug	Sep	Oct	Nov	Dec	Jan	Feb	Mar
Actual Looked After Children	400	395	390	397	396	392	393	384	384	374			



The legal framework for the CiC population is as follows:



The age distribution of CiC is as follows:



Foundation		Primary						Secondary				
PrS	R	Y1	Y2	Y3	Y4	Y5	Y6	Yr 7	Yr 8	Yr 9	Y10	Y11
<b>9</b>	<b>8</b>	<b>10</b>	<b>9</b>	<b>8</b>	<b>13</b>	<b>21</b>	<b>19</b>	<b>17</b>	<b>21</b>	<b>30</b>	<b>32</b>	<b>45</b>

The 'virtual school' population' is as follows:

Figures for the groups that we are 'unable to control' are as follows:

	March	April	May	June	July	August	Sept	Oct	Nov
Asylum Seekers LAC	18	17	16	17	17	16	19	19	23
Sutton Judgement Young People								2	
Criminal remands		1		2	1				1

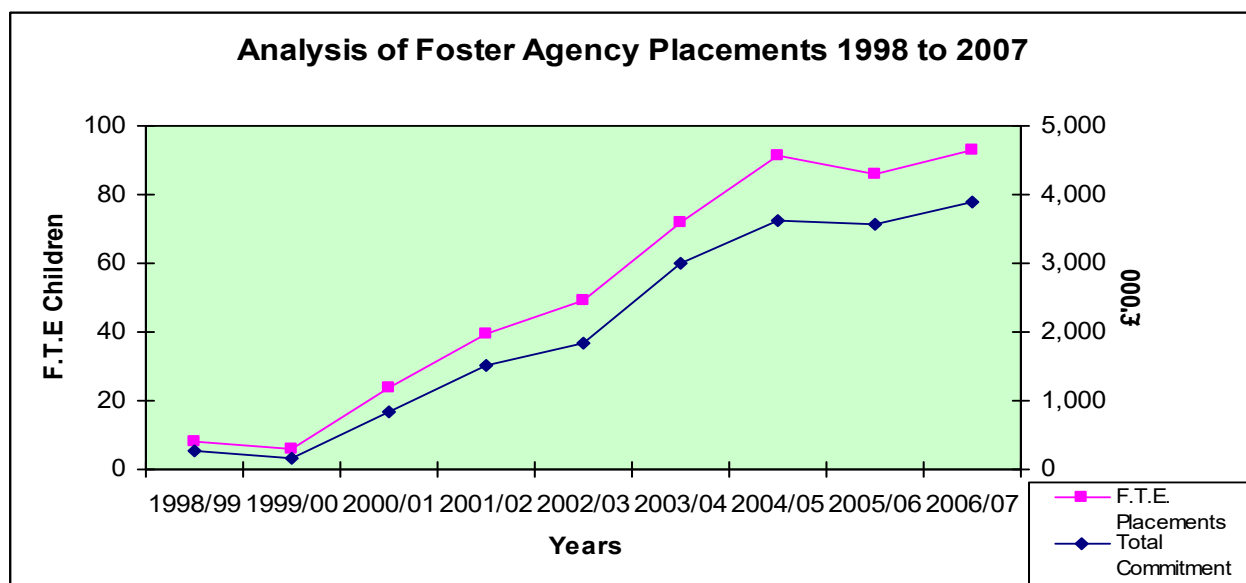
The recruitment activity for in house foster carers has been as follows:

Date	Approvals	Resignations/Terminations	Running total of new carers
March 2003	6	11	-5
March 2004	13	4 resignation +1 termination	+3
March 2005	17	1 termination + 4 resignations	+15
March 2006	17	1 termination + 6 resignations	+25
March 2007	13	7 resignations	+31

Parent and baby placements via court proceedings is as follows:

Year	IFA FTE	Residential FTE	Total FTE
2003/04	2.79	0.16	2.95
2004/05	7.50	0.33	7.83
2005/06	7.00	0.16	7.16
2006/07	14.17	0.81	14.98

Use of IFAs is as follows:



Use of residential agency placements is as follows:

**Summary of Residential Agency Placements 1998/99 to 2006/07**

Year	F.T.E. Placements	Total Commitment	Unit Cost Per Week	Unit Cost Base Plus Inflation
1998/1999	3.65	120,809	634	
1999/2000	4.78	115,088	462	
2000/2001	8.73	527,746	1,160	
2001/2002	15.87	1,278,400	1,545	
2002/2003	22.88	2,276,771	1,908	
2003/2004	20.64	2,439,051	2,260	2260.00
2004/2005	23.12	2,845,705	2,354	2316.50
2005/2006	33.58	4,141,012	2,358	2374.41
2006/2007	41.09	4,877,668	2,270	2433.77

## CiC Strategy for change - Analysis by Placement Type

Placement Type	Placement Numbers				
	September 07	Movement	March 08	Movement	March 09
<b>Disability</b>					
Agency	9				
In-House	10				
Link (Barnardos)	5				
<b>IFA</b>					
Standard	72				
Intensive (ISP etc)	13				
Parent & Baby	7				
<b>Residential</b>					
Children's Homes	26				
Boarding School*	10				
Family Assessment	2				
<b>Secure Accommodation</b>	1				
<b>Foster &amp; Adoption (In-House)</b>					
Standard	131				
Intensive (SPS)	11				
Parent & Baby	4				
Family & Friends	31				
Residence Orders*	148				
Special Guardianship Orders*	7				
<b>Leaving Care - Post 16</b>					
Standard	17				
Intensive (SPS)	1				
Family & Friends	3				
Supported Lodgings	7				
<b>Asylum Seekers</b>	18				
<b>Other (i.e. placed with parents)</b>	?				
Total Children Placed	514				
* Non CiC					
CiC	378				