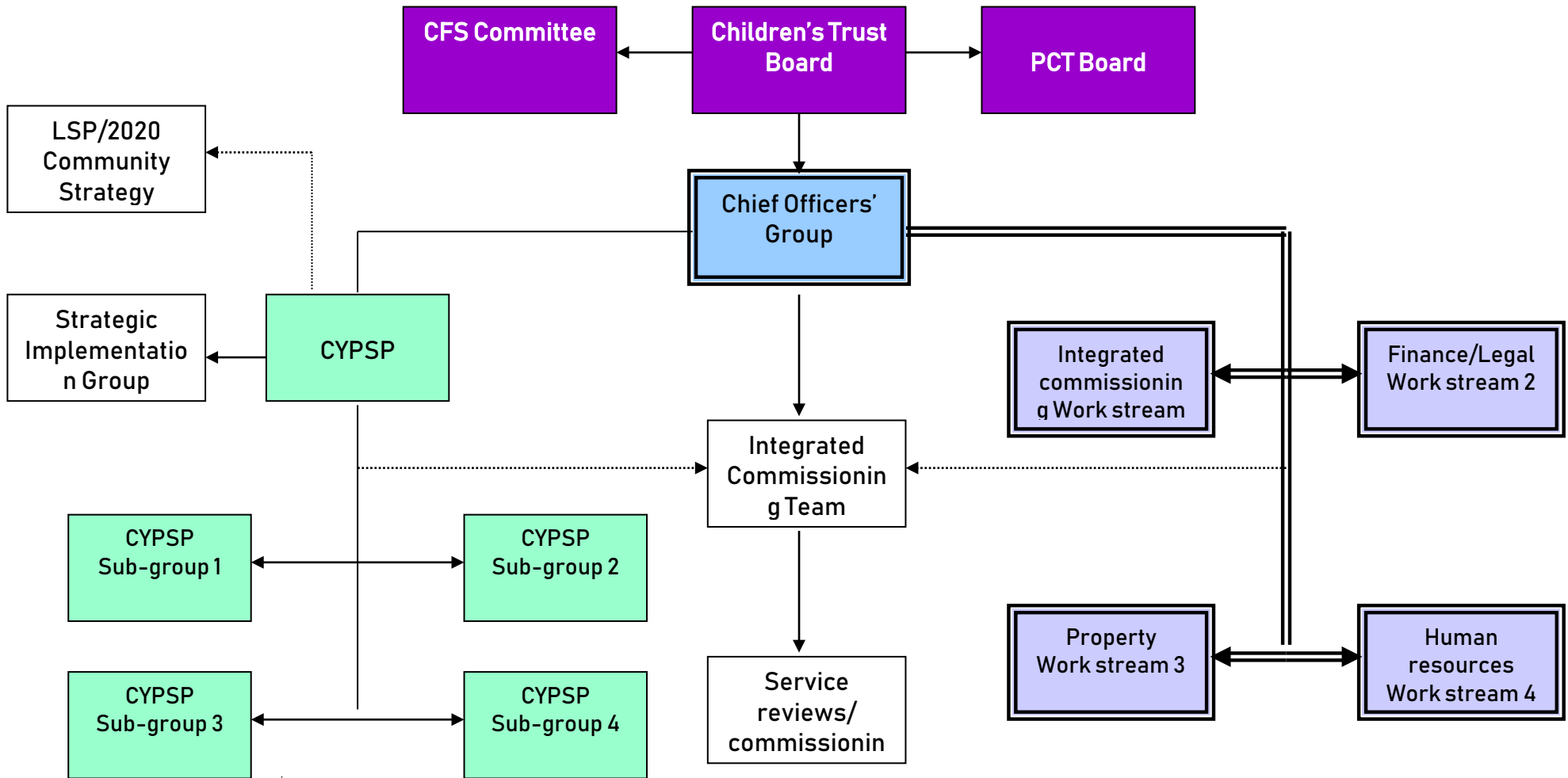


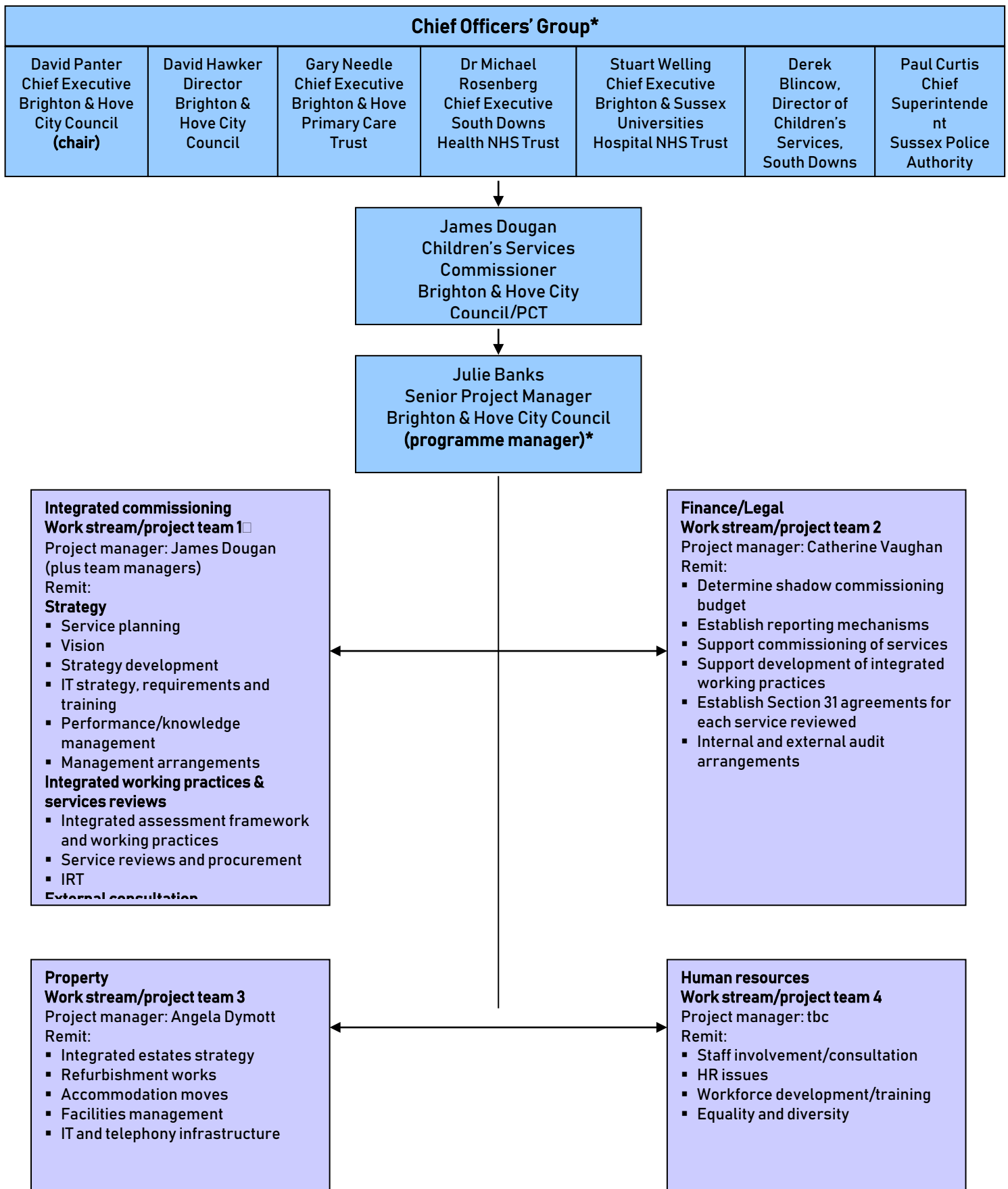
Governance and Programme Management Arrangements



Note

Double lines indicate programme management arrangements

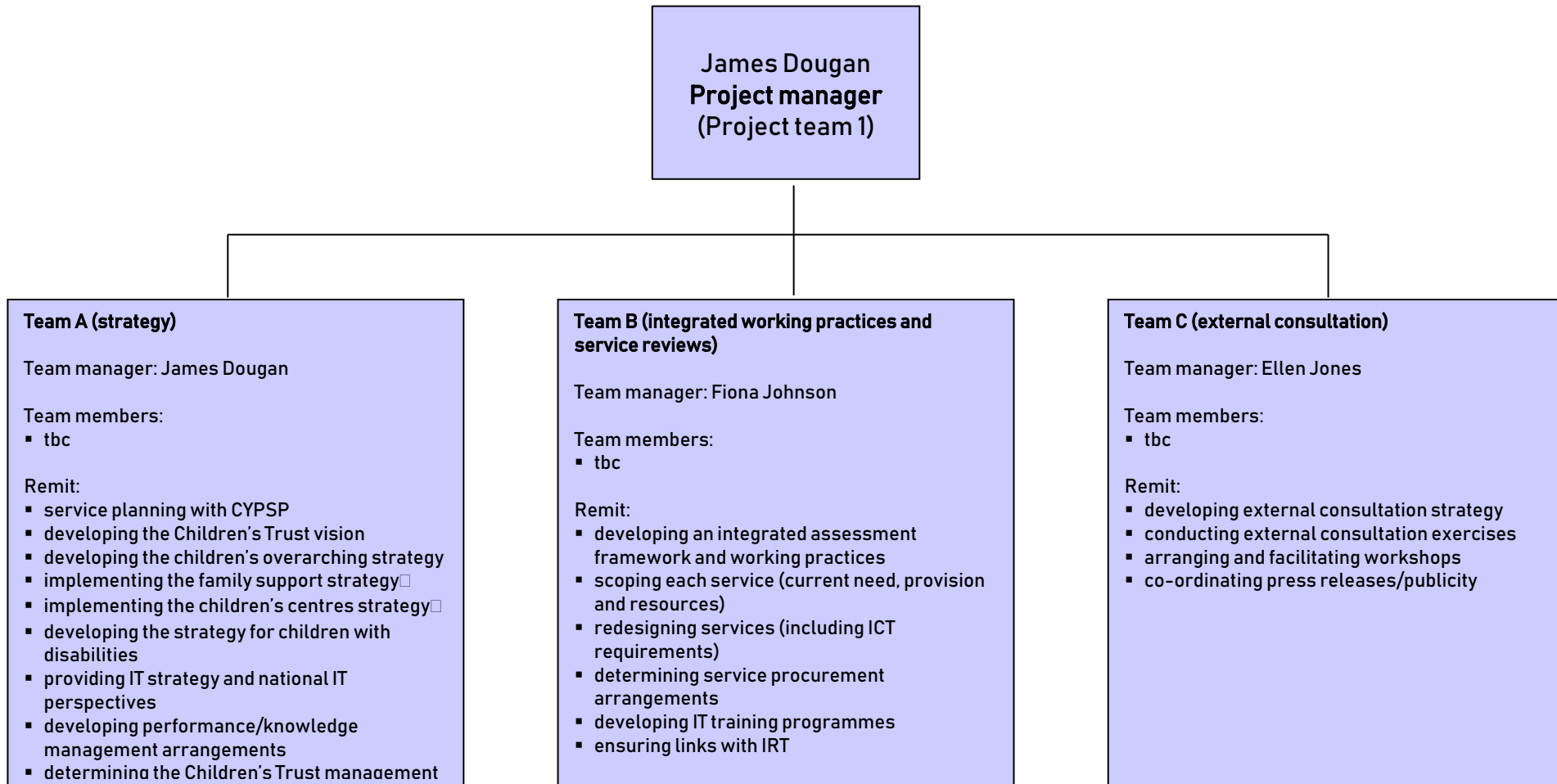
Programme Structure



* Indicates programme board member

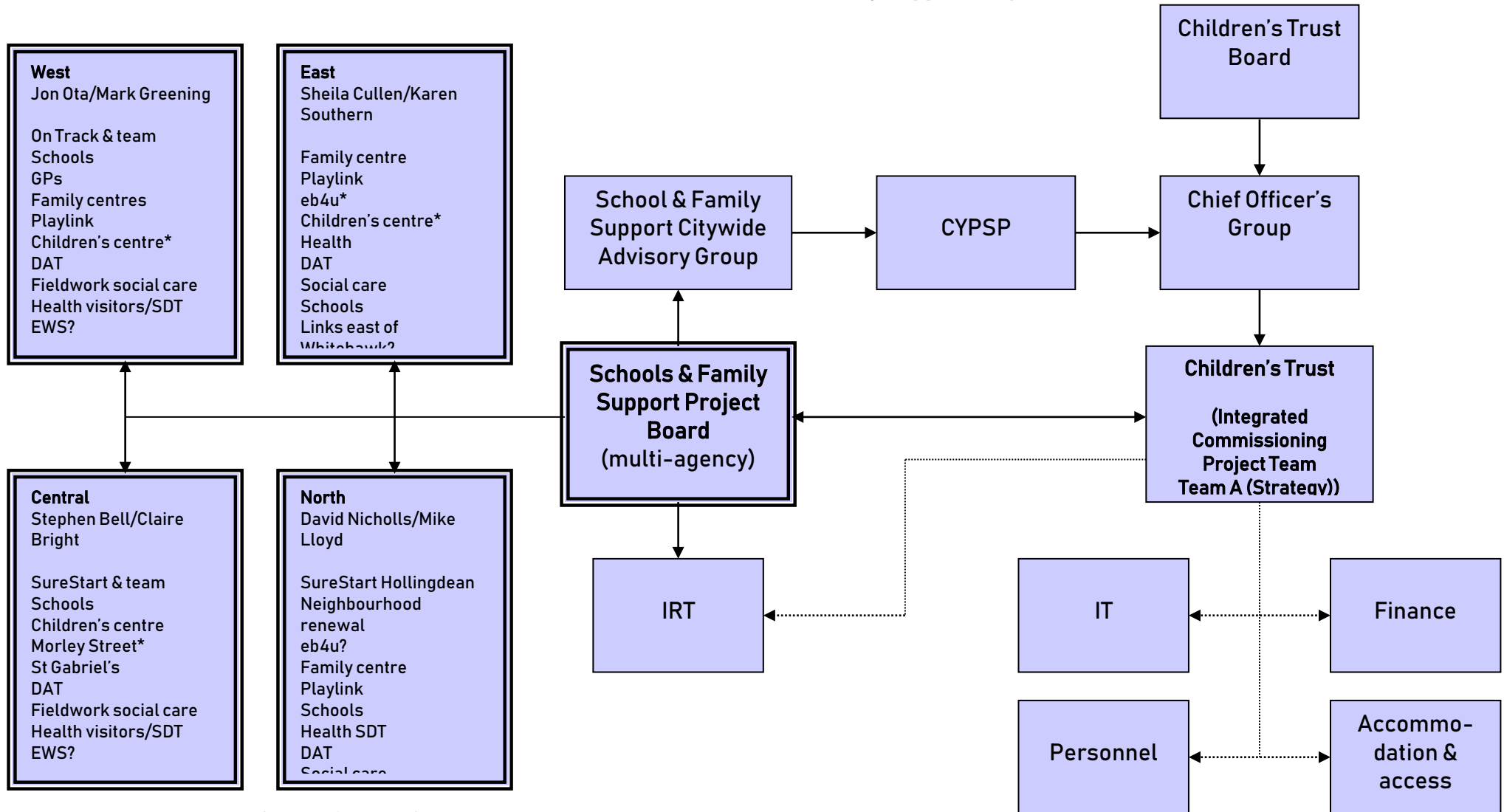
Due to its size and complexity, the work of this project team will be broken down into three sub-project teams

Structure for Work Stream/Project Team 1 (Integrated Commissioning)



- The Schools and Family Support Project Board will continue to meet and progress this work, although formal decision making and access to support services will be via the Children's Trust programme management arrangements (specifically, via Team A (Strategy))

Structure/Context of the Schools and Family Support Project Board



Note: Double lines indicate Schools & Family Support Project Board arrangements

* Indicates an additional project

NB Extended/full service school development