




Performance Reporting Strategy & Governance



Best Value Performance Report Environment 2003/04 Quarter Two

PI	Definition	B&H 2003/04				B&H Performance against comparator's 2002/03 quartile data			Additional information
		2002/03 result	Position at Sept 2003	End of year Estimate	Target	Top	Median	Bottom	
No.									

Best Value Performance Indicator reference number and definition











- This block contains
- The 2002/03 audited results
 - The position at sept 2003 (quarter 2)
The coloured dots indicate if our performance to-date is currently, on or exceeds target (green), below target (amber) or well below target (red)
 - End of year estimate and target (Provided by Service manager where possible).
 - Target for 2003/04











2002/03 Quartile data

Performance to- date is compared to quartiles.
The Coloured dots indicate what quartile performance falls into Top quartile (green), Median (amber) or Bottom quartile (red)

If the PI is recorded on a cumulative basis, performance is not compared to quartile data. The quartile that the target falls in to is indicated instead by a blue diamond.

Additional performance information.

PI	Definition	B&H 2003/04				B&H Performance against Quartile information (2002/03)			Additional information
		2002/03 result	Position at Sept 2003	End of year Estimate	Target	Top	Median	bottom	
82a KDT2	% recycled of total tonnage of household waste arisings	11.20%	12.70% 		15.50%	12.00% 	10.00%	9.00%	Data up until July only
82b KDT2	% composted of total tonnage of household waste arisings	3.47%	3.70% 		4.50%	5.90%	3.90%	2.40% 	Data up until July only
126	Domestic burglaries per 1,000 households	16.20	9.37 	18.73	15.51 (cumulative)	9.00	13.00 	19.00	
175	% of those racial incidents that resulted in further action	99.70%	71.00% 	94.80%	95.00%	100.00%	100.00%	90.00% 	This Indicator relates to (BVPI 174 The number of racial incidents recorded per 100,000 population arising in the delivery of the council's services)
91	% of population served by a kerbside collection of recyclable materials	53.57%	59.18% 		65.00%	100.00%	93.00% 	54.00%	10-15% below target

PI	Definition	B&H 2003/04				B&H Performance against Quartile information (2002/03)			Additional information
		2002/03 result	Position at Sept 2003	End of year Estimate	Target	Top	Median	bottom	
128	Vehicle crimes per 1,000 population	19.40	10.04 	20.09	17.97 (cumulative)	10.00	14.00 	20.00	10-15% below target
188	The number of planning decisions delegated to officers as a percentage of all decisions	82.90%	85.02% 	85.00%	90.00%	90.00%	85.00% 	77.00%	5-10% below target
82d	(tonnage landfilled of total tonnage of household waste arisings)	83.33%	83.70% 		80.00%	87.00%	84.00% 	79.00%	0-5% below target
84	Kilogrammes of household waste collected per head	468.86	158.44 		474.00 (cumulative)	501.00 	524.00	557.00	0-5% below target
127b	Violent offences committed in a public place per 1,000 population	14.20	7.21 	13.34	14.09 (cumulative)	4.00	6.00	10.00 	0-5% below target

PI	Definition	B&H 2003/04				B&H Performance against Quartile information (2002/03)			Additional information
		2002/03 result	Position at Sept 2003	End of year Estimate	Target	Top	Median	bottom	
100	Number of days of temporary traffic controls or road closure on traffic sensitive roads caused by road works per kilometre of traffic sensitive road	7.40	0.00 		12.60	0.20 	0.80	2.10	
109a	Determine 50% of major planning applications in 13 weeks	21.74%	69.47% 	50.00%	50.00%	55.00% 	44.00%	32.00%	
109b	Determine 55% of minor planning applications in 8 weeks	46.76%	72.03% 	55.00%	55.00%	64.00% 	55.00%	47.00%	
109c	Determine 70% of other planning applications in 8 weeks	58.82%	83.26% 	70.00%	70.00%	81.00% 	74.00%	66.00%	
127a	Violent offences committed by a stranger per 1,000 population					2.00	4.00	7.00	Data not submitted by Police

PI	Definition	B&H 2003/04				B&H Performance against Quartile information (2002/03)			Additional information
		2002/03 result	Position at Sept 2003	End of year Estimate	Target	Top	Median	bottom	
127c	violent crimes committed in connection with licensed premises per 1,000 population		●			1.00	1.00	2.00	Data not submitted by Police
127d	violent crimes committed under the influence per 1,000 population		●			1.00	2.00	4.00	Data not submitted by Police



Performance on or exceeding target

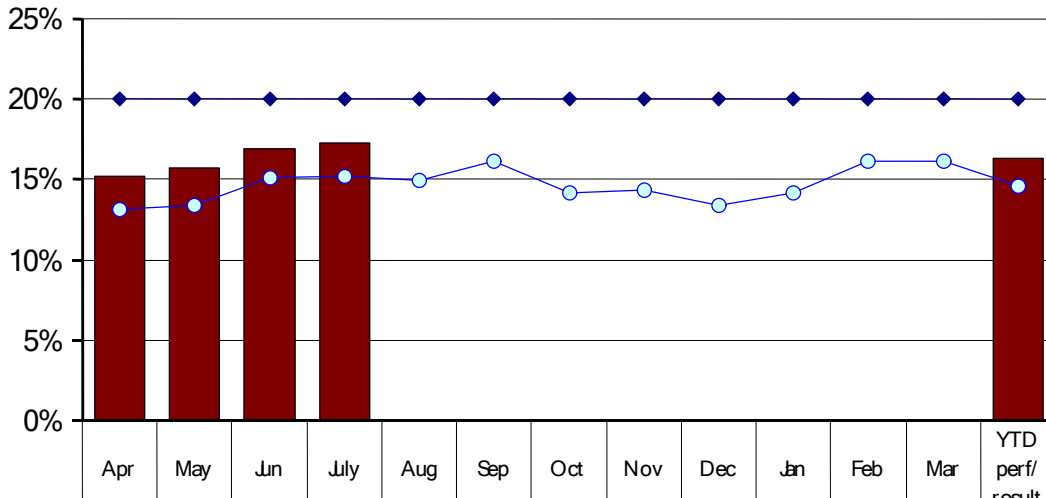


Performance Below target



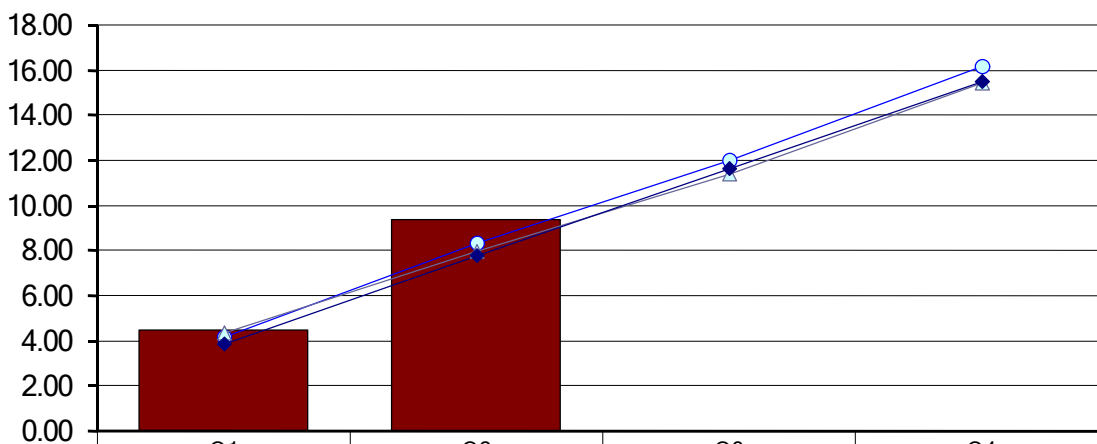
Performance well below target

KDT2 = BVPI 82a & BVPI 82b Recycle 20% of household waste



National PSA target:
30% by 2004/05

BVPI 126 Domestic burglaries per 1,000 households





Performance on or exceeding target

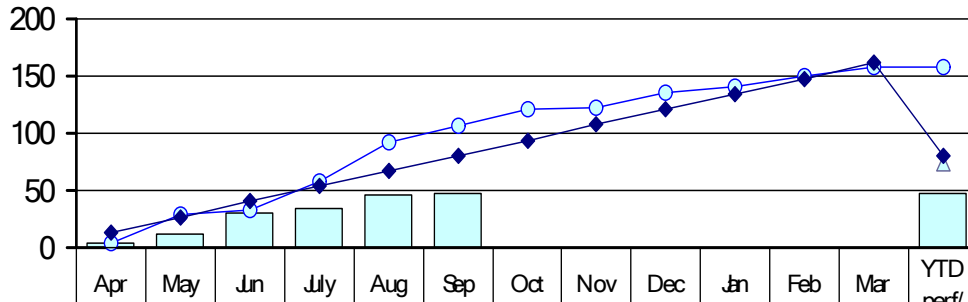


Performance Below target



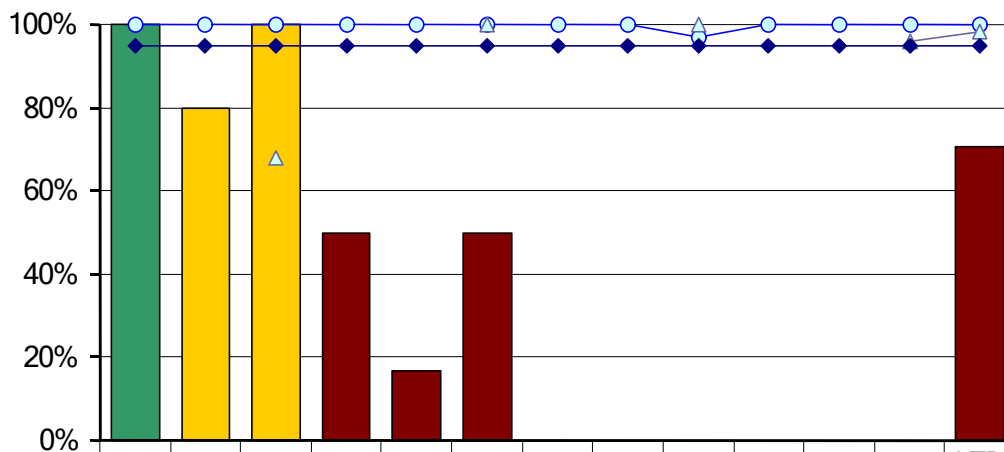
Performance well below target

BVPI 174 The number of racial incidents recorded per 100,000 population arising in the delivery of the council's services



	Apr	May	Jun	July	Aug	Sep	Oct	Nov	Dec	Jan	Feb	Mar	YTD perf/
2003/04	3.60	11.60	30.81	34.01	46.02	47.62							47.62
2002/03	4.03	28.63	33.07	58.07	92.34	106.05	120.56	122.58	135.82	140.65	150.32	158.38	158.38
2001/02													73.49
Target	13.44	26.87	40.31	53.75	67.18	80.62	94.06	107.49	120.93	134.37	147.80	161.24	80.62

BVPI 175 The percentage of those racial incidents resulted in further action



	Apr	May	Jun	July	Aug	Sep	Oct	Nov	Dec	Jan	Feb	Mar	YTD perf/ result
2003/04	100%	80%	100%	50%	17%	50%							71%
2002/03	100%	100%	100%	100%	100%	100%	100%	100%	97%	100%	100%	100%	100%
2001/02			68%			100%			100%			96%	98.4%
Target	95%	95%	95%	95%	95%	95%	95%	95%	95%	95%	95%	95%	95%



Performance on or exceeding target

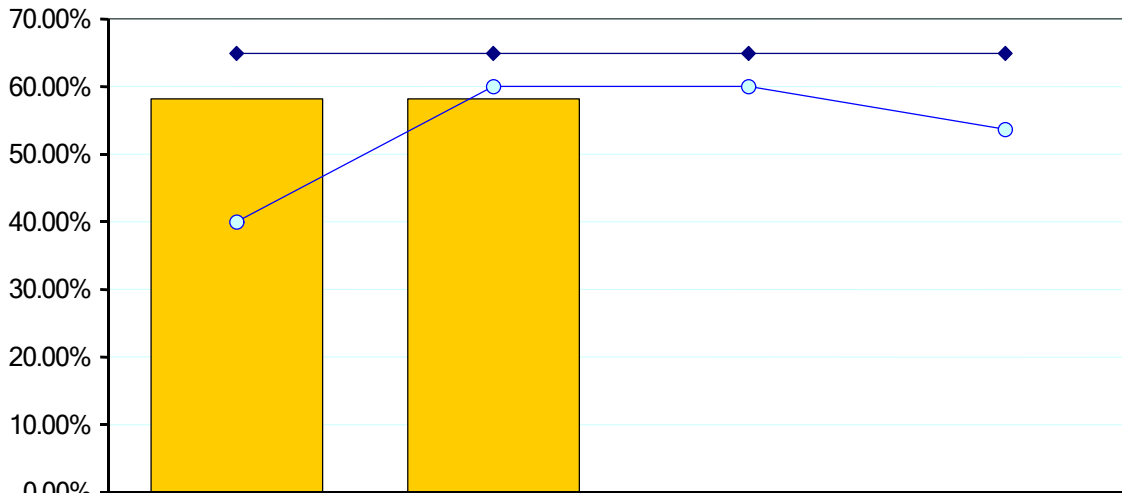


Performance Below target



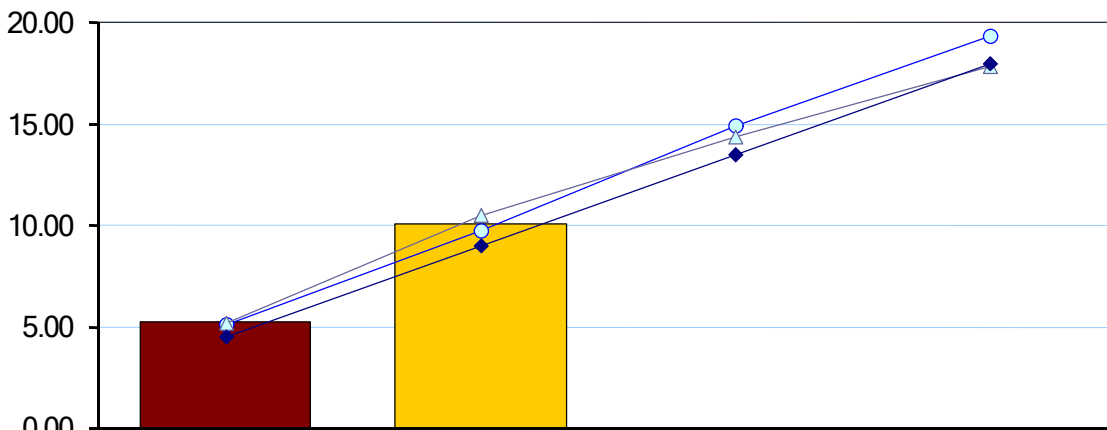
Performance well below target

BVPI 91 The % of population served by kerbside collection of recyclable



	Q1	Q2	Q3	Q4
2003/04	58.19%	58.19%		
2002/03	40.00%	60.00%	60.00%	53.75%
2001/02				
Target	65.00%	65.00%	65.00%	65.00%

BVPI 128 Vehicle crimes per 1,000 population



	Q1	Q2	Q3	Q4
2003/04	5.27	10.04		
2002/03	5.09	9.73	14.87	19.34
2001/02	5.14	10.49	14.32	17.84
Target	4.49	8.99	13.48	17.97



Performance on or exceeding target

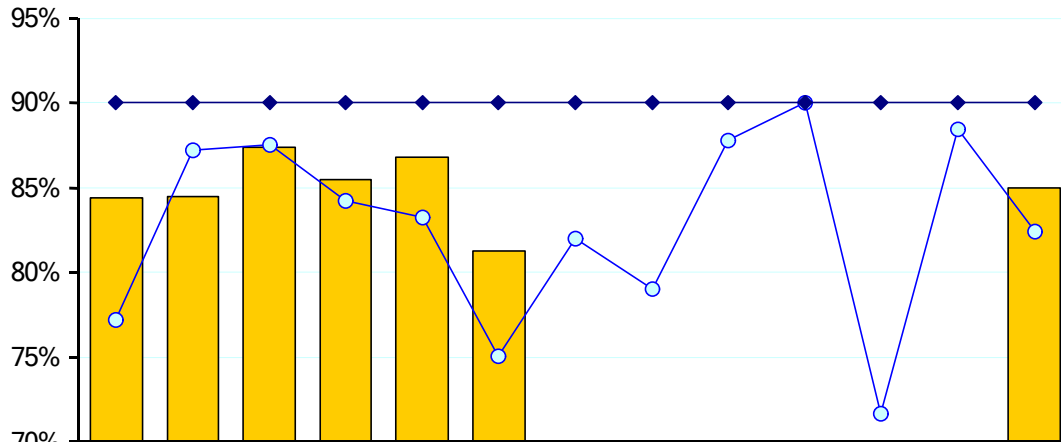


Performance Below target



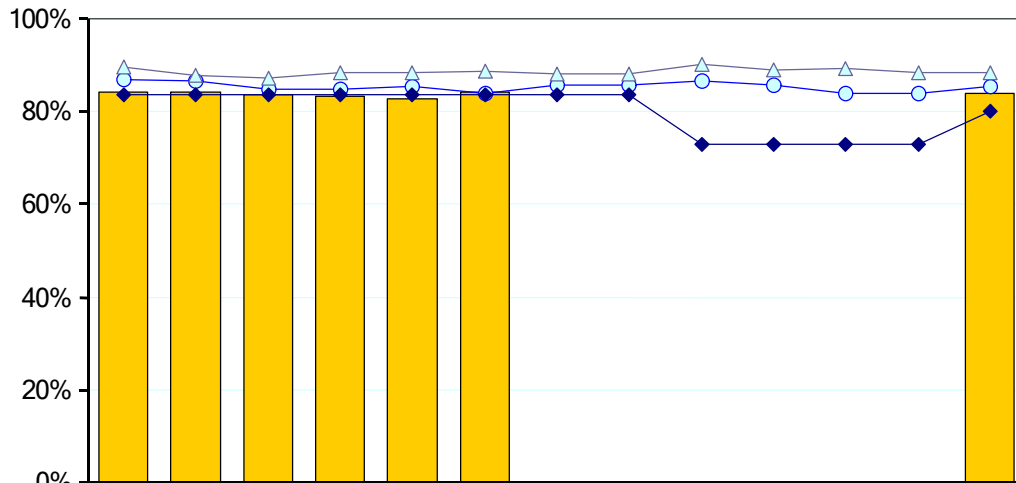
Performance well below target

BVPI 188 The number of planning decisions delegated to officers as a percentage of all decisions



	Apr	May	Jun	July	Aug	Sep	Oct	Nov	Dec	Jan	Feb	Mar	YTD perf/ result
2003/04	84.4%	84.5%	87.4%	85.4%	86.8%	81.3%							85.0%
2002/03	77.2%	87.2%	87.6%	84.3%	83.3%	75.1%	82.0%	79.0%	87.8%	90.1%	71.7%	88.4%	82.4%
2001/02													
Target	90.0%	90.0%	90.0%	90.0%	90.0%	90.0%	90.0%	90.0%	90.0%	90.0%	90.0%	90.0%	90.0%

BVPI 82d The percentage landfilled of total tonnage of household waste



	Apr	May	Jun	July	Aug	Sep	Oct	Nov	Dec	Jan	Feb	Mar	YTD
2003/04	84.3%	84.2%	83.7%	83.3%	82.7%	84.3%							83.8%
2002/03	86.8%	86.6%	84.9%	84.8%	85.3%	83.8%	85.8%	85.7%	86.6%	85.8%	83.9%	83.8%	85.4%
2001/02	89.4%	87.9%	87.2%	88.5%	88.5%	88.7%	88.2%	88.2%	90.1%	89.0%	89.3%	88.5%	88.3%
Target	83.5%	83.5%	83.5%	83.5%	83.5%	83.5%	83.5%	83.5%	73.0%	73.0%	73.0%	73.0%	80.0%



Performance on or exceeding target

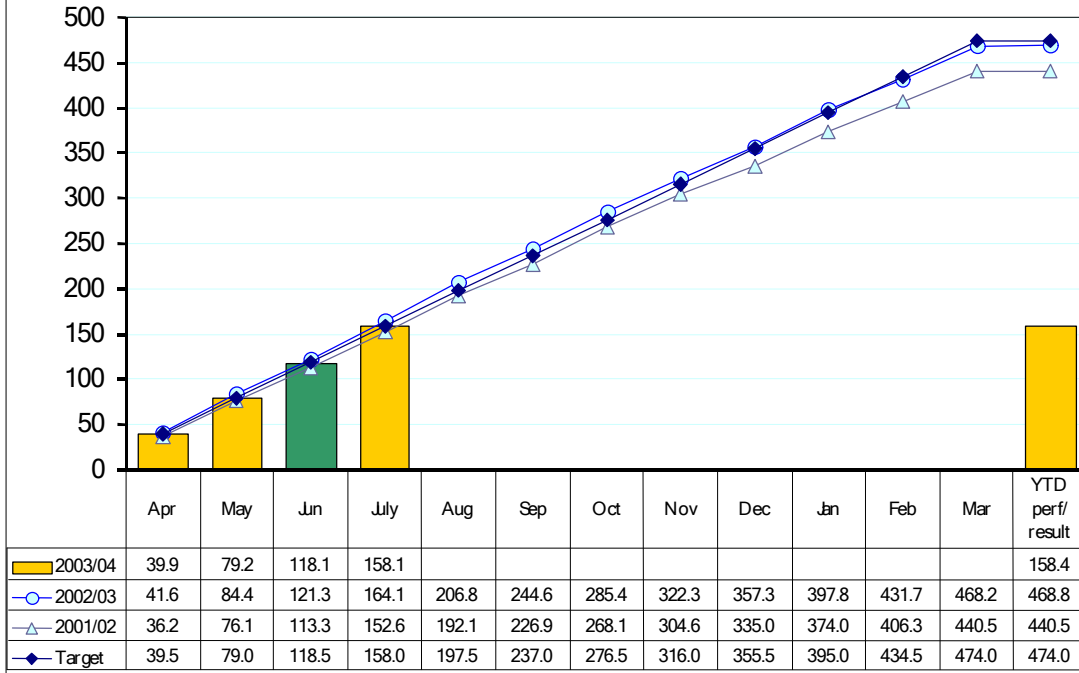


Performance Below target

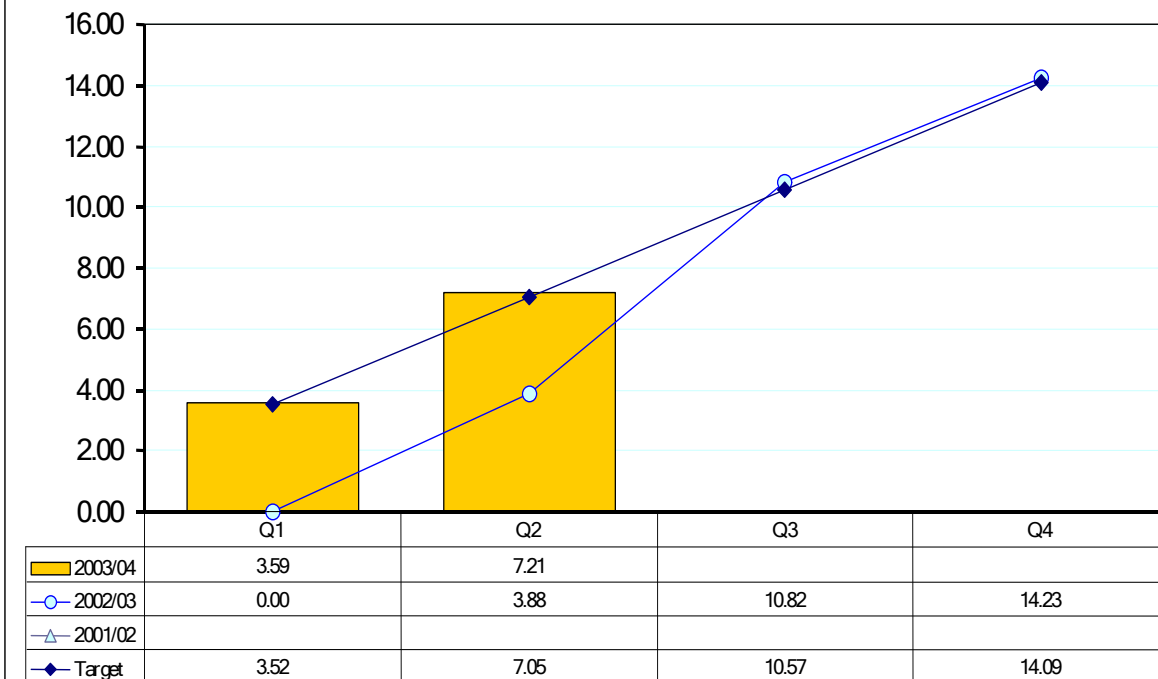


Performance well below target

BVPI 84 Kilogrammes of household waste collected per head



BVPI 127b Violent offences committed in a public place per 1,000 population





Performance on or exceeding target

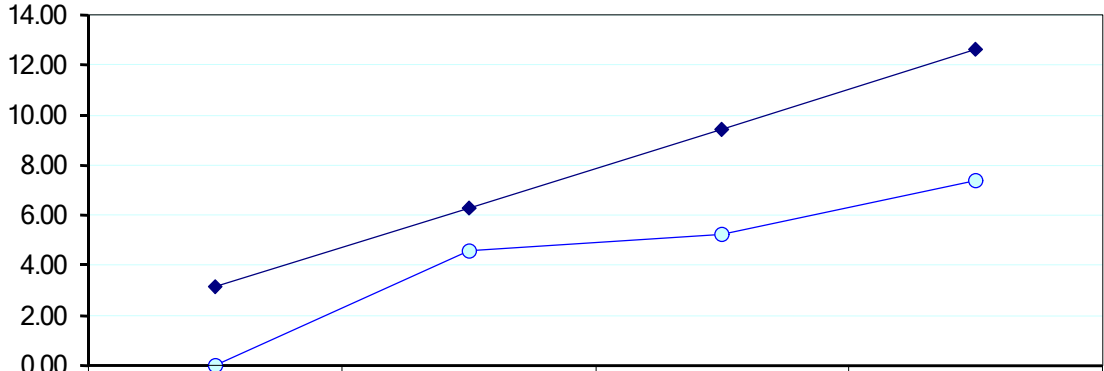


Performance Below target



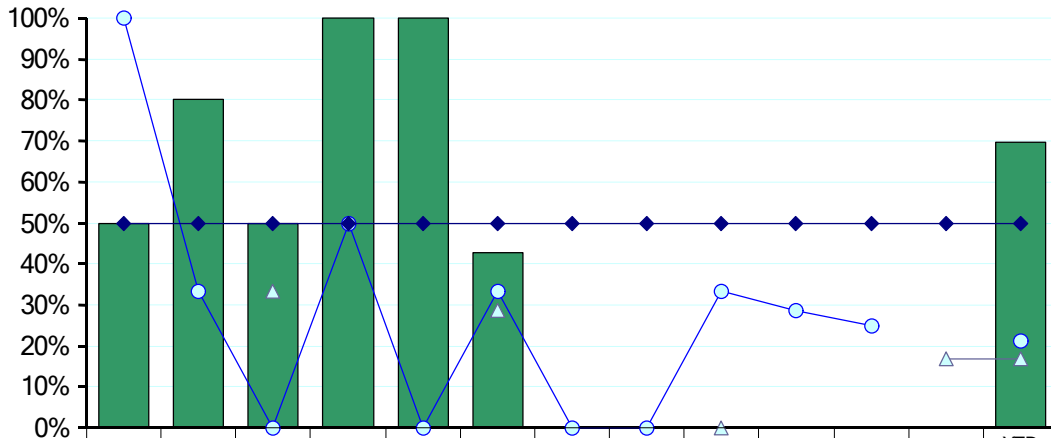
Performance well below target

BVPI 100 Number of days of temporary traffic controls or road closure on sensitive roads caused by road works per kilometre of traffic sensitive



	Q1	Q2	Q3	Q4
2003/04	0.00	0.00		
2002/03	0.00	4.56	5.22	7.41
2001/02				
Target	3.15	6.30	9.45	12.60

BVPI 109a Determine 50% of major applications in 13 (Planning standard set by the Government)



	Apr	May	Jun	July	Aug	Sep	Oct	Nov	Dec	Jan	Feb	Mar	YTD perf/ result
2003/04	50.0%	80.0%	50.0%	100%	100%	42.9%							69.6%
2002/03	100.0%	33.3%	0.0%	50.0%	0.0%	33.3%	0.0%	0.0%	33.3%	28.6%	25.0%		21.3%
2001/02			33.3%			28.6%			0.0%			16.7%	16.7%
Target	50.0%	50.0%	50.0%	50.0%	50.0%	50.0%	50.0%	50.0%	50.0%	50.0%	50.0%	50.0%	50.0%



Performance on or exceeding target

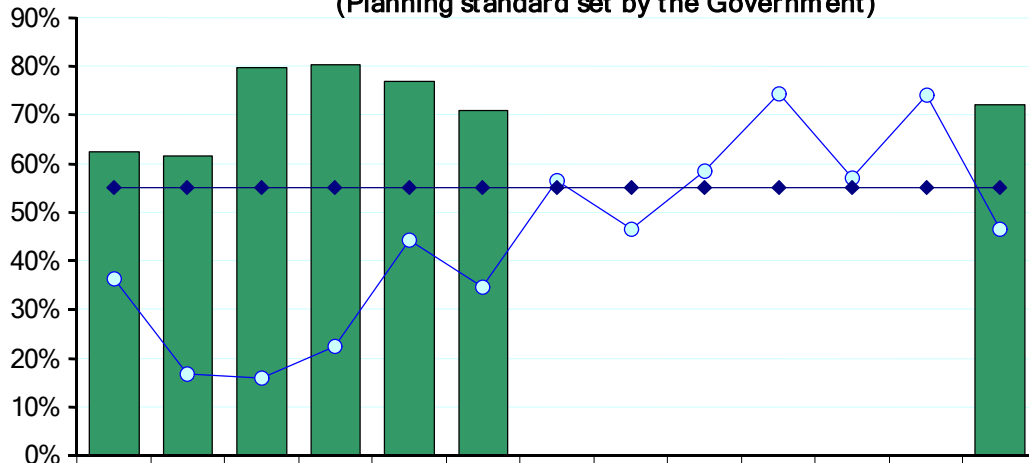


Performance Below target



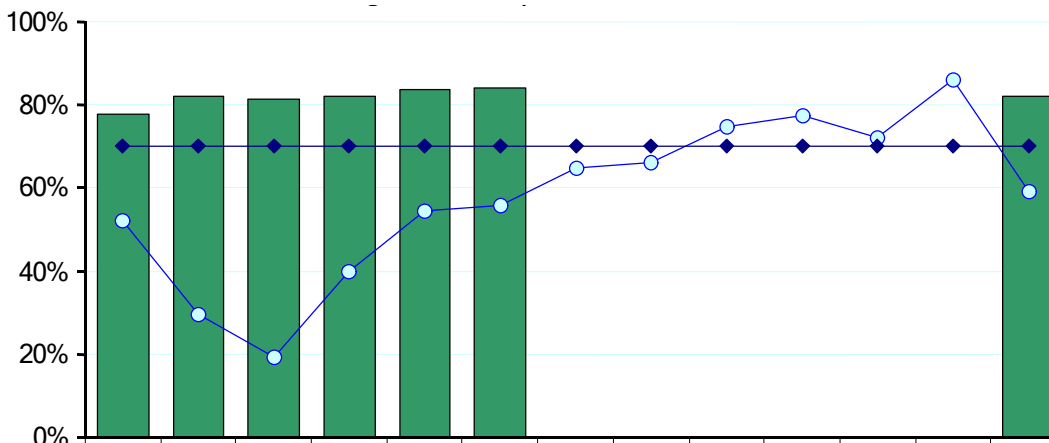
Performance well below target

BVPI 109b Determine 55% of minor applications in 8 (Planning standard set by the Government)



	Apr	May	Jun	July	Aug	Sep	Oct	Nov	Dec	Jan	Feb	Mar	YTD perf/ result
2003/04	62.4%	61.5%	79.7%	80.4%	76.8%	71.1%							72.0%
2002/03	36.2%	16.7%	15.9%	22.4%	44.3%	34.7%	56.5%	46.7%	58.4%	74.3%	57.1%	74.0%	46.4%
2001/02													
Target	55.0%	55.0%	55.0%	55.0%	55.0%	55.0%	55.0%	55.0%	55.0%	55.0%	55.0%	55.0%	55.0%

BVPI 109c Determine 70% of other applications in 8 (Planning standard set by the)



	Apr	May	Jun	July	Aug	Sep	Oct	Nov	Dec	Jan	Feb	Mar	YTD perf/ result
2003/04	77.7%	81.9%	81.5%	82.2%	83.6%	84.0%							82.0%
2002/03	52.2%	29.7%	19.4%	40.0%	54.4%	55.7%	64.8%	66.2%	74.7%	77.6%	71.9%	85.9%	59.1%
2001/02													
Target	70.0%	70.0%	70.0%	70.0%	70.0%	70.0%	70.0%	70.0%	70.0%	70.0%	70.0%	70.0%	70.0%