

PLANNING COMMITTEE ADDENDUM

2.00PM, THURSDAY, 17 SEPTEMBER 2020

VIRTUAL VIA SKYPE
Presentation, Application C

Agendas and minutes are published on the council's website www.brighton-hove.gov.uk. Agendas are available to view five working days prior to the meeting date.

Electronic agendas can also be accessed through our meetings app available through [ModernGov: iOS/Windows/Android](#)

This agenda and all accompanying reports are printed on recycled paper

ADDENDUM

ITEM		Page
C	BH2020/01620 -57 Goldstone Crescent, Hove -Full Planning RECOMMENDATION – MINDED TO GRANT <i>Ward Affected: Hove Park</i> Presentation, Application C	1 - 22

57 Goldstone Crescent

BH2020/01620

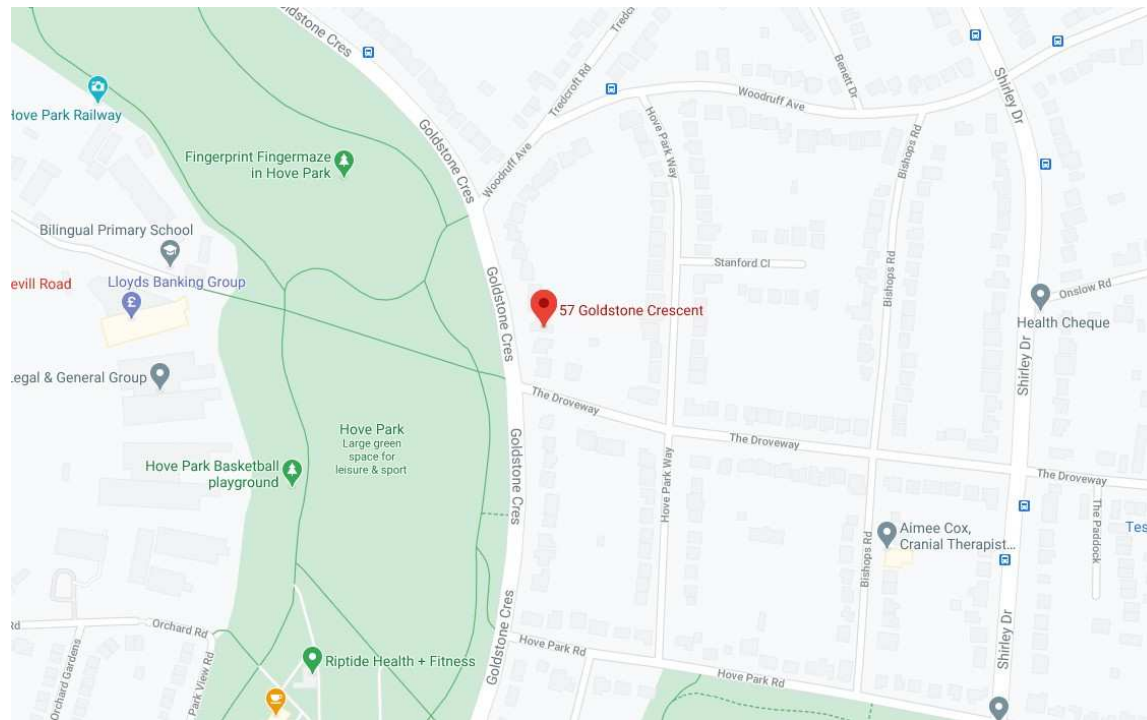


**Brighton & Hove
City Council**

Application Description

- Demolition of existing house and erection of three storey building with accommodation in the roofspace to provide 2 three-bedroom and 5 two-bedroom flats (C3) with associated landscaping and parking.

Map of application site



Existing Location Plan



Proposed Location Plan



Aerial photo(s) of site



3D Aerial photo of site



Street photo(s) of site



Photo - Rear Elevation



Side elevations

South



North

Existing Block Plan



Proposed Block Plan



Split of uses/Number of units

- Ground floor: 2x two-bedroom flats
- First floor: 1x two-bedroom flat and 1x three-bedroom flat
- Second floor: 1x two-bedroom flat and 1x three-bedroom flat
- Third floor: 1x two-bedroom flat

Proposed Front Elevation



07/2003773

Proposed Rear Elevation



07/2003773

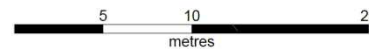
Contextual Front Elevations



Existing.

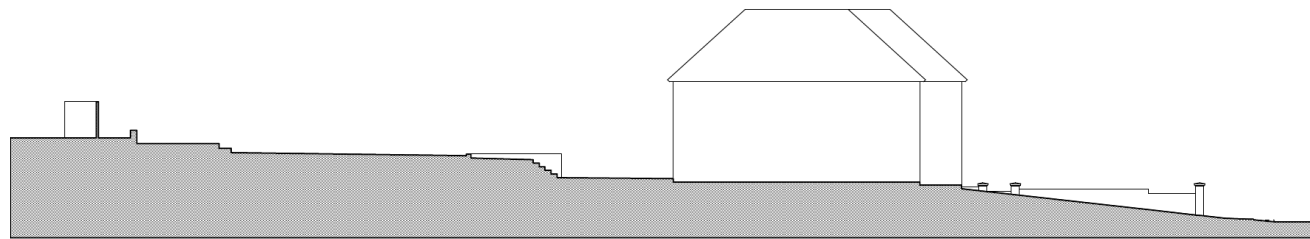


Proposed.

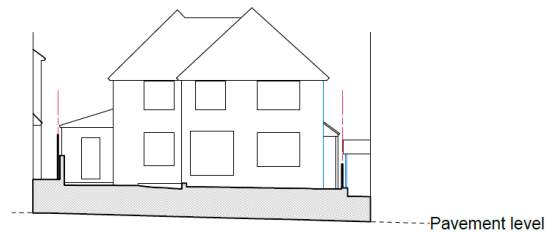
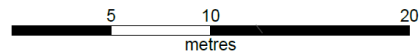


13/2003773

Existing Site Section(s)



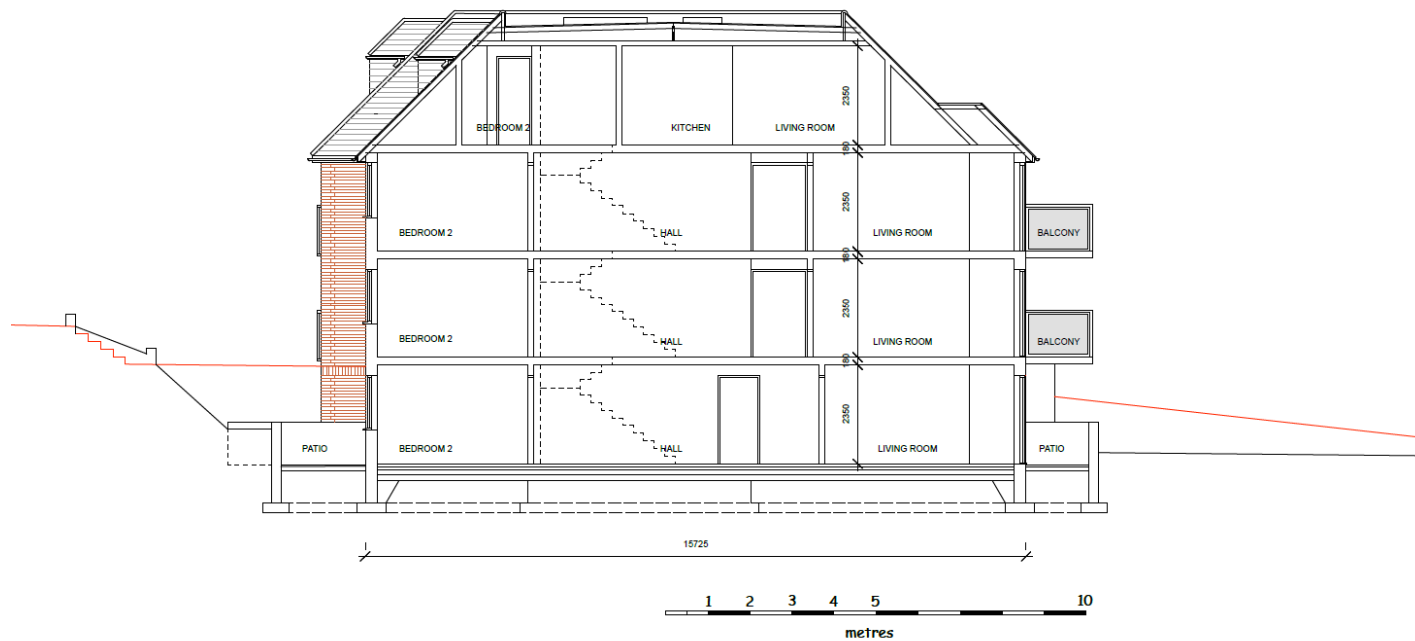
Section A.



Section B.

02/2003773

Proposed Site Section(s)



08/2003773

Key Considerations in the Application

- Principle of development
- Design and appearance
- Housing density
- Affordable housing
- Standard of accommodation
- Amenity impacts
- Highways and transport impacts
- Sustainability, landscaping and biodiversity

S106 table

- **Section 106 Head of Terms:**
-
- **Affordable housing:**
- 20% financial contribution (calculated at £238,750)
-
- **Sustainable Transport:**
- £6,400 contribution towards improving transport infrastructure and services in the immediately vicinity of the development site

Conclusion and Planning Balance

- Unit size mix would meet need in the city for more family sized housing
- Design considered acceptable subject to pre-commencement condition on materials and finish
- Amenity impacts acceptable subject to conditions
- Development would provide acceptable standard of accommodation
- Car-parking provision lower than the maximum standard. Not 'car-free' as not in CPZ.
- Disabled parking provision.
- Proposals would contribute to Council's housing targets with no significant impacts.

