



329

Families, Children and Learning

Working with others to ensure no one is left behind

Our annual report for 2016-17 and
our plans for 2017-18 and beyond



Brighton & Hove
City Council

Introduction

Watch this short video to hear from our Lead Member and our Director and find out their reflections on the past year and their ambitions for the year ahead.



Dan Chapman

Lead Member for Families,
Children & Learning
Chair of Children, Young
People & Skills Committee



Pinaki Ghoshal

Executive Director
of Families, Children
& Learning



The children we work with in Brighton & Hove

51,000

children living in Brighton & Hove

32,190

children attending school

4,237

children eligible for free school meals

90%

get one of their preferred primary phase schools

2,160

children supported by social work to be safe (including 412 children in care)

84%

get one of their preferred secondary schools

2,021

young people supported by youth services

6,156

children receive SEND support (including 972 with Education, Health & Care plans)

3,159

children attending council nurseries and children's centres

7,230

students attending post 16 providers

4,004

pupils have English as an Additional Language (including 885 directly supported by us)

784

families engaged in the troubled families programme

37

unaccompanied asylum seeking children



7

council-run nurseries/pre-schools

7

designated children's centres

52

primary phase schools

10

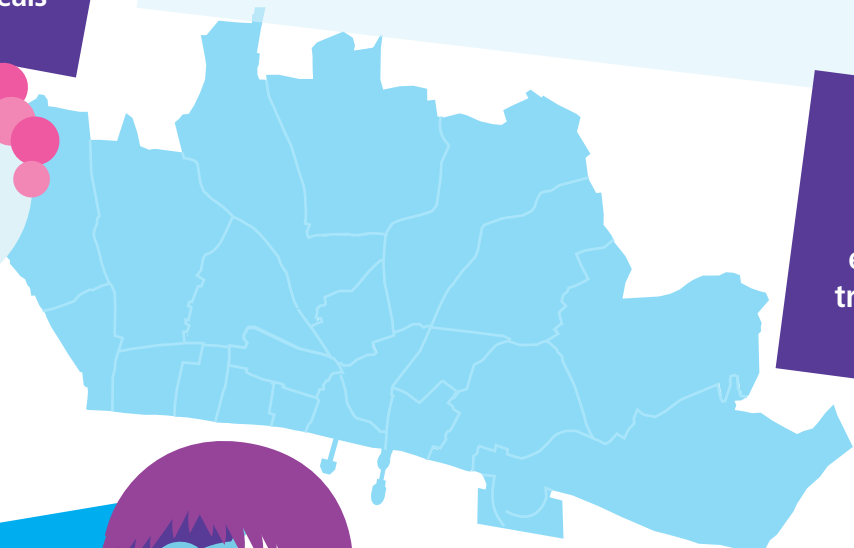
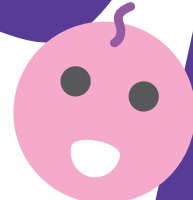
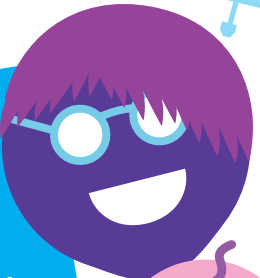
secondary phase schools

8

special schools and PRUs

2

children's homes



331

Our services are performing well



Greatly improved results

in our schools. 60% five-plus A*-C GCSE results, above the national average.

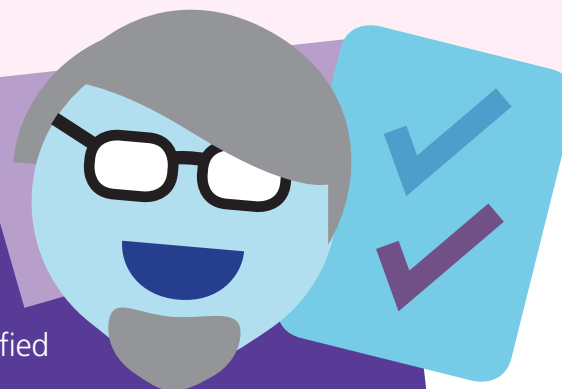
93% of schools rated good or outstanding

by Ofsted.



88% of two year olds eligible for a free childcare place take one up

and the provision is of a very high quality.



Positive feedback for SEND services

19% of children in the city have some kind of identified additional need. Ofsted/Quality Care Commission inspection gave positive feedback to our SEND services about staff, provision and work with parents and carers.

Inspectors tell us we know our services well. The Minister of State for Vulnerable Children and Families sent us a letter praising our inspection results.

Significantly improved quality of social work

The recent LGA safeguarding peer review said "social workers and support staff at every level were impressive".



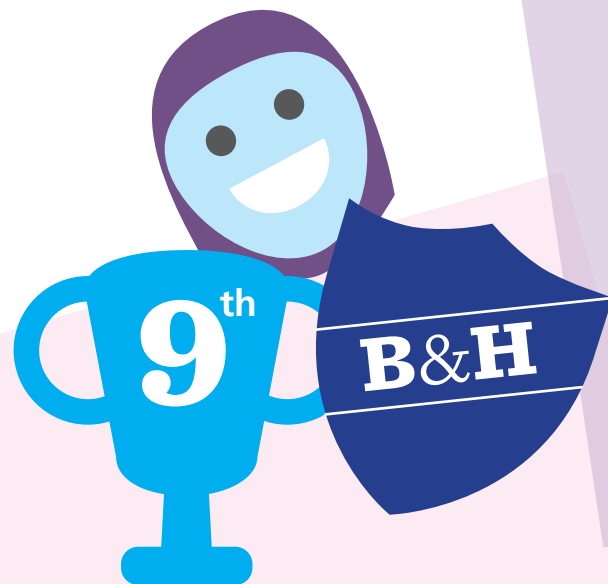
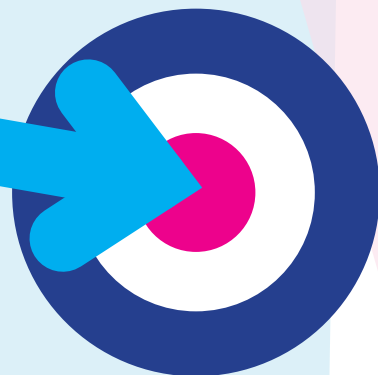
Take a look at our video about the outstanding Jump Start Nursery

Increase in the number of in-house foster carers

(paid for directly by us and not an agency) in the last year. We currently have 55% in house with a target of 65% by 2018. This will help save a lot of money from our placements budget.

Now
55%

2018
65%



Numbers of young people

who are not in education, employment or training continue to be below the national average, and for care leavers we are ranked 9th out of 150 local authorities.



Reduction in the number of young offenders

who have reoffended or had a custodial sentence over the last few years. Ranked sixth lowest out of 138 Youth Offending Teams nationally.



Well done all!

Our challenges for the years ahead

- Improve educational outcomes for disadvantaged young people
- Boost apprentice numbers
- Tackle inequality
- Provide school places where required
- Improve the emotional wellbeing of young people
- Strengthen our partnerships
- Ensure this is a city with opportunities for children and families to wander and wonder.

Staff and teams were finalists

in a variety of national awards including the Youth Employability Service, The Early Parenting Assessment Programme, the Virtual School, the multi-agency Breastfeeding Team, Apprentice of the year, a newly qualified Social Worker and our Principal Social Worker.

Feedback

We actively seek feedback about our services particularly from service users themselves.

In the past year:

- There have been more than twice as many recorded compliments about our staff and services in 2016/17 (128) as 2015/16 (56).
- The number of complaints received in 2016/17 (82) is two thirds of that received in 2015/16 (120).
- The number of complaints from Children in Care received in 2016/17 (9) is 50% less than in 2015/16 (18).
- The proportion of complaints escalating to Stage 2 reduced from 26% in 2015/16 to 11% in 2016/17.
- There has been continual improvements made in our response times to complaints.



128

compliments



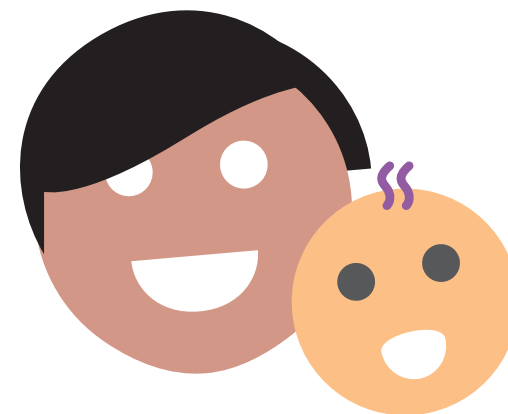
complaints

“Thank you for all the support over the past year! We’d have been quite lost without it. The work you do is so invaluable to families in need and I wanted you to know that you are appreciated”



Our numbers of children in care have fallen,

but we remain above national averages and we have a higher number of children on child protection plans.



“My social worker helps me to understand and explains things in a way that makes sense to me”

We take the health of our children in care seriously



93%

- 93% have up to date immunisations
- 89% have up to date dental checks
- 93% have up to date health checks
- All above the national averages



“Our family coach was very nice and easy to talk to. She helped us realise that we were capable of doing things”

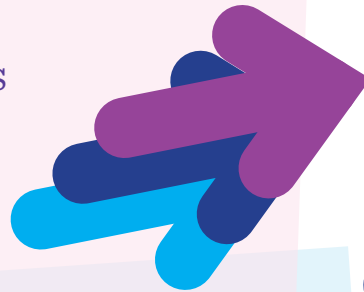
Council committee decisions

Key decisions from the Children, Young People & Skills Committee and the Health & Wellbeing Board in 2016/17 include:

A financial trust has been created to enable care leavers to have savings. This will give them greater options on life choices as they move to independence.



Progress on our review on services for those with SEND. The next step is a formal consultation about realigning some of the special school provision.



Agreement to further explore the option of creating an additional week's school holiday outside of the usual times. This was in response to a consultation asking the council to explore how families can get access to cheaper holidays. An additional week is planned for October 2017.



A pilot project was agreed to better support the mental health of pupils in schools. This has now been expanded to roll out to all schools in the city. Early findings suggest that more targeted local support can stop young people needing more intensive support later on.



Difficult decisions were made at Budget Council in February 2017 to help us meet our savings targets. A range of services across FCL were affected including reductions to the youth service and to our early help provision. Services are now being redesigned to ensure that the most vulnerable are protected as much as possible.

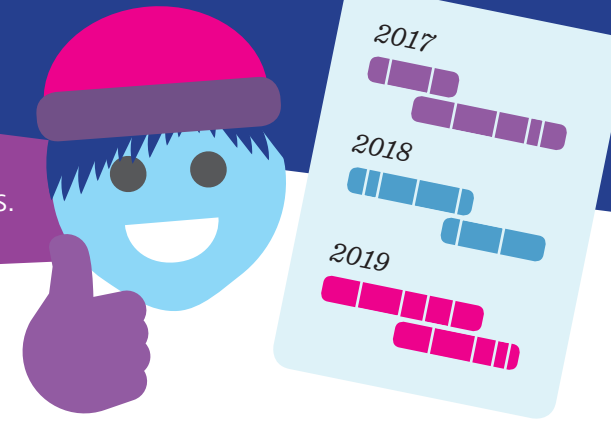


Agreement to explore the establishment of an educational partnership in the city



Our plans for 17/18 and beyond

Our [Families, Children & Learning directorate plan](#) sets out our vision, objectives and key actions for the next few years.



We want to:

- Listen to the voice of all our service users and their families
- Help our service users live happy, safe and positive lives – helping people to achieve their potential
- Continue to drive the education, learning and skills agenda for all in the city
- Take a whole family approach and ensure no one is left behind
- Create a city where all our service users feel proud, supported and part of their communities
- Continue to drive changes in our workforce so that it reflects our local communities.

Our key objectives and actions

1. Work as one Families, Children & Learning directorate and with partners, taking a whole family approach to improve outcomes for all disadvantaged groups
 - Deliver the Reducing the Differences Strategy
 - Develop projects and initiatives to support the most vulnerable including the 'Move On' project for adults with learning disabilities and explore the concept of a child and young person friendly city, and 'Poverty Proofing the School Day'
 - Work with partners to better support emotional health and wellbeing needs in young people
2. Support safe and stable family lives
 - Deliver an effective and efficient social work service with a whole family approach and further develop the new relationship based social work model of practice
 - Continue to support families of children & young people with SEND by offering direct payments, respite and short breaks
 - Implement and review a new way of working for our early help services
3. Promote independence, learning and resilience for all disadvantaged families and service users
 - Support the City Employment and Skills Plan
 - Increase the options to help families achieve greater independence
 - Provide advocacy services to children in care
4. Provide access to high quality and appropriate early years, school and education places. Work with the University of Brighton Academy Trust to secure a location for the new secondary school
 - Deliver a new school organisation plan
 - Implement the new structure for specialist provision integrated across education, health and care for children with SEND
5. Continue to drive efficient and effective services within existing resources
 - Ensure effective budget management and service modernisation
 - Use robust performance management and quality assurance frameworks
 - Improve the customer and service user experience
6. Develop and engage with staff to deliver change within the directorate and across council services
 - Improve staff communications and build relations with unions

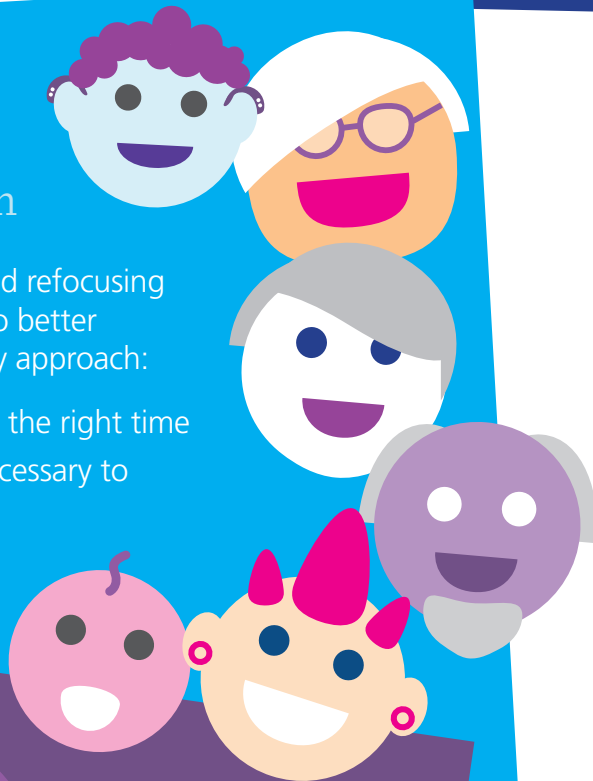
How we are doing things differently



Taking a whole family approach

We are redesigning and refocusing some of our services to better support a whole family approach:

- Support families at the right time
- Intervene when necessary to keep families safe
- Build resilience



Children, young people and families are at the heart of what we do

Working with partners to create a child and young person friendly city

We are challenging ourselves and partners in the city to consider what we should be doing to make the city a better place for all of our families, children & young people.

We live in a city with many opportunities for most, but can all of our children, young people and families take advantage of these?

Do we always ask about the needs and wants of children & young people when developing something new?

Do all young people feel proud of the city or feel like they belong?

These questions will be a key consideration in our work going forward.



Supporting adults with learning disabilities to move on

We are working with adults and their families to promote greater independence and empowerment by supporting service users to live independently, with the appropriate support in their local community



Find out more

www.brighton-hove.gov.uk/content/children-and-education

www.brightonandhovelscb.org.uk/

Related plans

338 Brighton & Hove City Council Corporate Plan 2015-2019
Brighton & Hove: The Connected City
Brighton & Hove Clinical Commissioning Group: Key Plans

For further information

Please contact the Service Manager for Policy & Business Support on 01273 293736 or Carolyn.bristow@brighton-hove.gov.uk

