

DRAFT

2030 Carbon Neutral Programme	
Project or Programme Name	2030 Carbon Neutral
Directorate / Service	Citywide Programme
Name of PID Author	Nick Hibberd, SRO.
Date PID drafted	October 2019
Executive	Executive Director, EEC
Programme or Project Manager	Chloe Sands

1. Programme Definition

Brighton & Hove City Council **declared a climate emergency** in December 2018 and has committed to becoming carbon neutral by 2030. This was a demonstration of the city's commitment to tackling climate change.

Along with the many other UK cities declaring the aim to be carbon neutral, we will need to focus on scale, transformation and acceleration – 'business as usual' will not be enough.

The 2030 Carbon Neutral Programme will oversee the development and then delivery of a co-ordinated programme of projects which aim to tackle climate change and transition the city to become carbon neutral.

2. Programme Objective

The core objective of the Programme is to develop a co-ordinated programme of projects (the 2030 Carbon Neutral Programme) by May 2020. As well as developing the Programme, work will also involve:

- Agreeing a methodology for recording emissions that allows the Council and the City to readily compare our progress with other UK and international cities working to achieve similar targets (e.g. the SCATTER model developed by Manchester University)
- Developing and delivering an engagement plan and a Citizens' Assembly process for residents to hear and discuss evidence, and make recommendations
- Developing a high-level plan to meet the 2030 target – delivered through a co-ordinated programme of projects
- Developing a communications plan to support activities and engagement.
- Continuing to collate information on our current carbon reduction initiatives and assess the contribution these will make to the 2030 target.

3. Scope

‘Carbon neutral by 2030’ is a target which specifies how much carbon must be cut, and how quickly. It is a [science-based target](#), aligned with the goals of the Paris Agreement – to limit global warming to well below 2°C compared to pre-industrial levels.

The target is based on the concept of a carbon budget – the amount of carbon emissions that can be released into the atmosphere from now on, and still stand a chance of remaining below 2°C.

Brighton & Hove City Council carbon neutral target is based on:

- Geographical boundary of the city council (we could also include emissions from agricultural land owned by BHCC outside the city boundary, this would require additional calculations)
- Full year data
- Emissions from all sources, including the council’s own activities and estate, as well as activities where the council has no direct control and limited ability to influence.
- To be agreed – interim targets for greenhouse gas reduction

Appendix 3 provides more detail on measuring carbon emissions and creating a pathway to 2030 in Brighton & Hove.

4. Timescales

See Phase 1 Programme Timetable at **Appendix 1**.

The Programme will initially have two Phases:

Phase 1. September 2019 – May 2020	Development of 2030 Carbon Neutral Programme
Phase 2. May 2020 Onwards	Delivery of 2030 Carbon Neutral Programme

5. Programme management team structure

The development and delivery of the Programme will be overseen by a Cross-Party Member Working Group. An Officer Steering Group will oversee the work commissioned by the Member Working Group. A project team will undertake the day to day work required to develop and deliver the programme.

6. Governance

Cross-Party Member Working Group

DRAFT 2030 Carbon Neutral Programme Initiation Document

Role: Oversight of the development and delivery of the 2030 Carbon Neutral Programme.

The list of Cllrs involved in the informal steering group to date is below. On setting up of a formal Cross-Party Member Working Group, it is suggested that membership should change to align with the constitution. This will consist of 2x Labour Cllrs, 2x Green Cllrs and 1x Conservative Cllr.

Labour Cllrs	<ul style="list-style-type: none">• Nancy Platts (Chair)• Anne Pissaridou• Tracey Hill• Theresa Fowler• Gary Wilkinson
Green Cllrs	<ul style="list-style-type: none">• Phelim MacCafferty• Pete West• Siriol Hugh-Jones
Conservative Cllrs	<ul style="list-style-type: none">• Lee Wares

Officers (from the Officer Steering Group below) would attend to support and administer the Cross-Party Member Working Group.

N.B. Consider a formal cross-party board along the lines of Procurement Advisory Board, to reflect the constitution and P&R agreement around establishing cross-party Boards?

Officer Programme Group

Role: Oversight of the work commissioned by the Cross-Party Member Working Group.

<ul style="list-style-type: none">• Executive Director EEC• Head of Policy, Partnerships & Scrutiny• International & Sustainability Manager• Sustainability Programme Officer• Sustainability Project Officer• Biosphere Programme Manager• Senior Policy, Partnerships & Scrutiny Officer• Policy, Partnership & Scrutiny Officer• Communications Business Partner• Digital Design Team Business Partner	<ul style="list-style-type: none">• Nick Hibberd (Chair)• Simon Newell• Rachel Williams• Mita Patel• Kirsten Firth• Sarah Dobson• Giles Rossington• Chloe Sands• Julie Harris• Sophie Gregory
--	--

Programme Manager

Role: Lead co-ordination of the development and delivery of the 2030 Carbon Neutral Programme

Officer: Chloe Sands

Programme Team

Role: Undertake the day to day work to develop and deliver the 2030 Carbon Neutral Programme.

<ul style="list-style-type: none">• International & Sustainability Manager• Sustainability Programme Officer• Sustainability Project Officer• Biosphere Programme Manager• Senior Policy, Partnerships & Scrutiny Officer• Policy, Partnership & Scrutiny Officer	<ul style="list-style-type: none">• Rachel Williams• Mita Patel• Kirsten Firth• Sarah Dobson• Giles Rossington• Chloe Sands
--	--

7. Stakeholder and Community Engagement

Community Engagement

A deliberative process through a City Assembly type approach.

Stakeholder Engagement:

The Living Coast Biosphere Board (tbc)

8. Risk Management

Risk Register to be developed by Officer Steering Group and presented to Member Working Group.

9. Communication Management

Communications Plan to be developed.

10. Quality Assurance and Monitoring

Consideration of establishing an Experts Panel such as the Greater Brighton Infrastructure Panel.

11. Resources

Revenue resources of £75k has been identified to support community engagement and commissioning of specialist facilitation of a City Assembly process.

Sustainability & Carbon Reduction Investment Fund

Capital funding of £500k towards investment in sustainability and carbon reduction projects was agreed at Budget Council in February 2018. The Sustainability & Carbon Reduction Investment Fund (SCRIF) fund will support work to help deliver on the ambitious commitment to be a carbon neutral city by 2030.

Full details of the SCRIF can be found at **Appendix 4**.

12. Equality Implications

An equalities impact assessment(s) (EIA) will be undertaken of the 2030 Carbon Neutral Programme and the projects within it to ensure that a policy, project or scheme does not discriminate against any disadvantaged or vulnerable people.

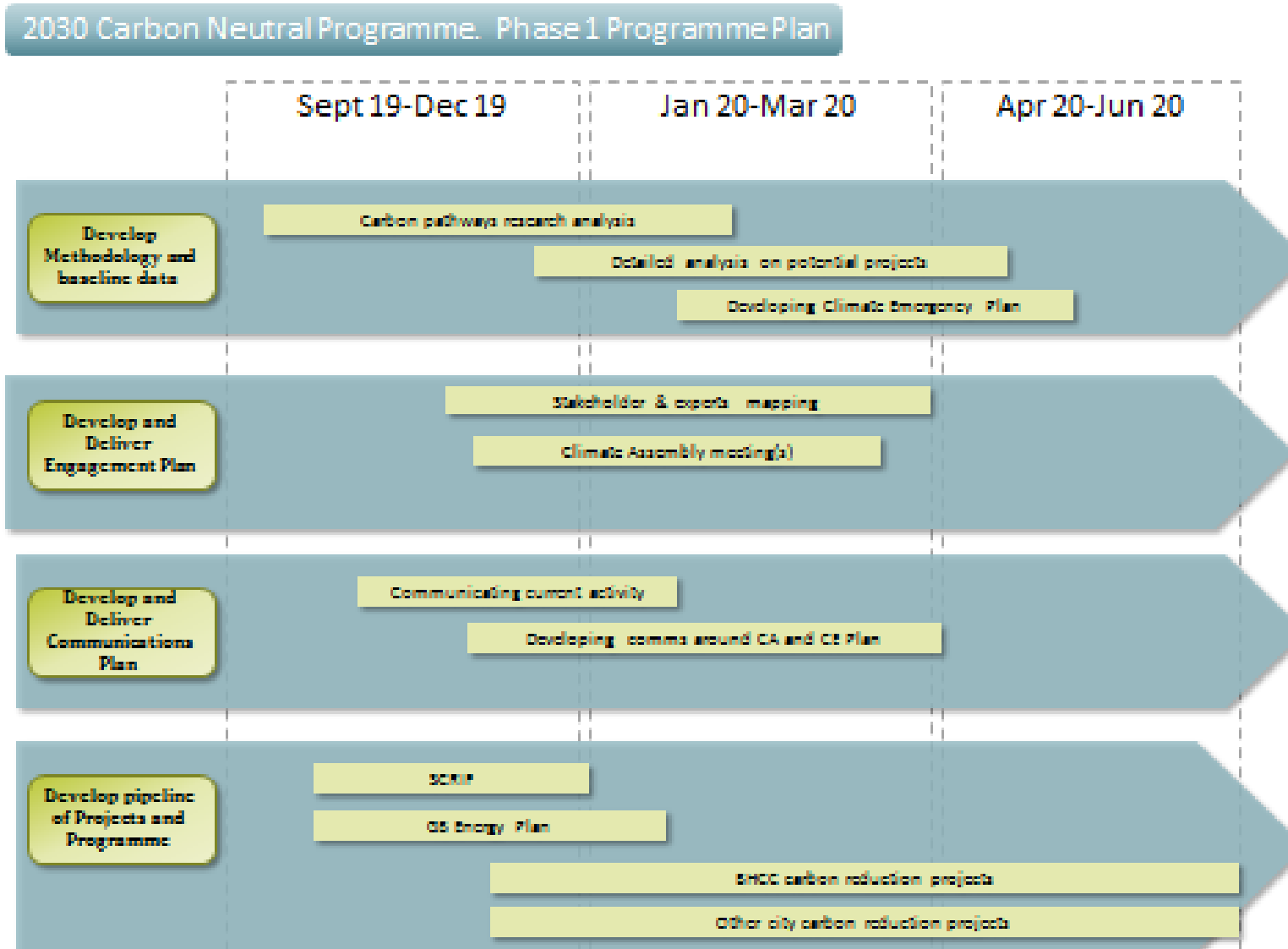
14. Links to other Strategies and policies

In order to be successful, the 2030 Carbon Neutral Programme will need to ensure that the development of other key council strategies and policies also support the aim of becoming a carbon neutral city by 2030. Examples of key strategies are:

- Local Transport Plan 5
- Local Cycling & Walking Infrastructure Plan
- Economic Strategy and Circular Economy Framework
- Biosphere Management Plan
- City Downland Estate Plan
- Greater Brighton Energy & Water Plans

A table of the key strategies that will support the delivery of the 2030 Carbon Neutral Programme is at **Appendix 2**.

Appendix 1. Phase 1. Programme Plan. (to be completed)



Appendix 2. Core Strategies that support delivery of 2030 Carbon Neutral Programme

Thematic area	Policy / Strategy	Timetable for Policy / Strategy Development	Thematic partnership(s)
Transport	Local Transport Strategy Local Cycling & Walking Infrastructure Plan	June 2019 ETS Committee agreed outline timetable for the development a new Local Transport Strategy and new Local Cycling & Walking Infrastructure Plan The new plan will set out an ambitious vision for the future of mobility in the city, outlining how transport investment and the promotion and application of advances in transport-related technology can help contribute towards high level goals such as:- <ul style="list-style-type: none"> • Supporting sustainable economic growth • Reducing carbon emissions – to become a carbon neutral city • Promoting equality of opportunity • Contributing towards better safety, security and health • Improving quality of life and a healthy, natural environment. 	Transport Partnership Transport for the South East Greater Brighton Economic Board
Land	City Downland Estate Plan Biosphere Management Plan	Downland Estate Plan under development in partnership with the South Down National Park. Plan will build upon the existing Downland Estate Policy	Biosphere Board South Downs National Park Authority
Property	Asset Investment Plan Housing Strategy	Asset Investment Plan being considered by the cross-party Asset Management Board	Asset Management Board
Economy	Circular Economy Framework	Economic Strategy approved Jan 2019 Circular Economy Framework under development	Economic Partnership Greater Brighton Economic Board Circular Brighton & Hove Biosphere Board
Waste	Waste & Recycling Strategy	To be discussed.	Tbc
Energy	Greater Brighton Energy Plan	Draft Vision for Greater Brighton Energy Plan: <i>“By 2050 Greater Brighton will have a resilient, zero carbon and</i>	Greater Brighton Economic Board Biosphere Board

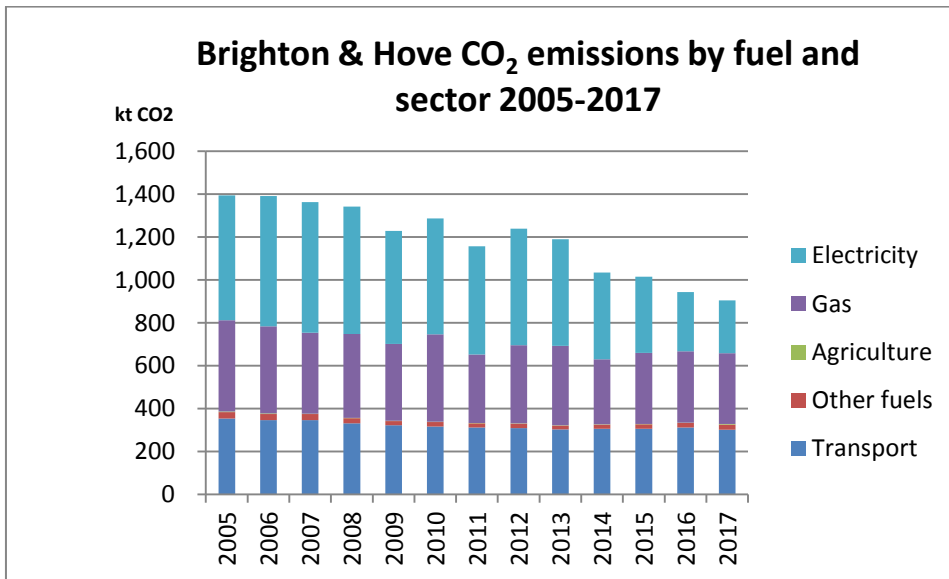
Thematic area	Policy / Strategy	Timetable for Policy / Strategy Development	Thematic partnership(s)
		<p><i>smart energy system that enables and supports a sustainable and healthy economy, environment and society across the city region”</i></p> <ul style="list-style-type: none"> - 12 September 2019: Draft Energy Plan to be shared at Greater Brighton Infrastructure Panel meeting - 12 September 2019 to mid-November 2019: Wider consultation on draft Energy Plan with relevant stakeholders (not public consultation) - 9 December 2019: Finalised plans to be shared / signed off at Infrastructure Panel meeting - 28 January 2020: Review / Sign off on finalised plans by Greater Brighton Economic Board. 	
Water	Greater Brighton Water Plan	<p>Draft Vision for Greater Brighton Water Plan</p> <p><i>“By 2050, Greater Brighton will enjoy a resilient, integrated water environment, underpinning sustainable growth, with a popular appreciation of the fundamental role water plays in supporting daily life.”</i></p> <ul style="list-style-type: none"> - 12 September 2019: Draft Water Plan to be shared at Greater Brighton Infrastructure Panel meeting - 12 September 2019 to mid-November 2019: Wider consultation on draft Water Plan with relevant stakeholders (not public consultation) - 9 December 2019: Finalised plan to be shared / signed off at Infrastructure Panel meeting - 28 January 2020: Review / Sign off on finalised plan by Greater Brighton Economic Board. 	Greater Brighton Economic Board Biosphere Board

Appendix 3. Measuring carbon emissions and creating a pathway to 2030 in Brighton & Hove

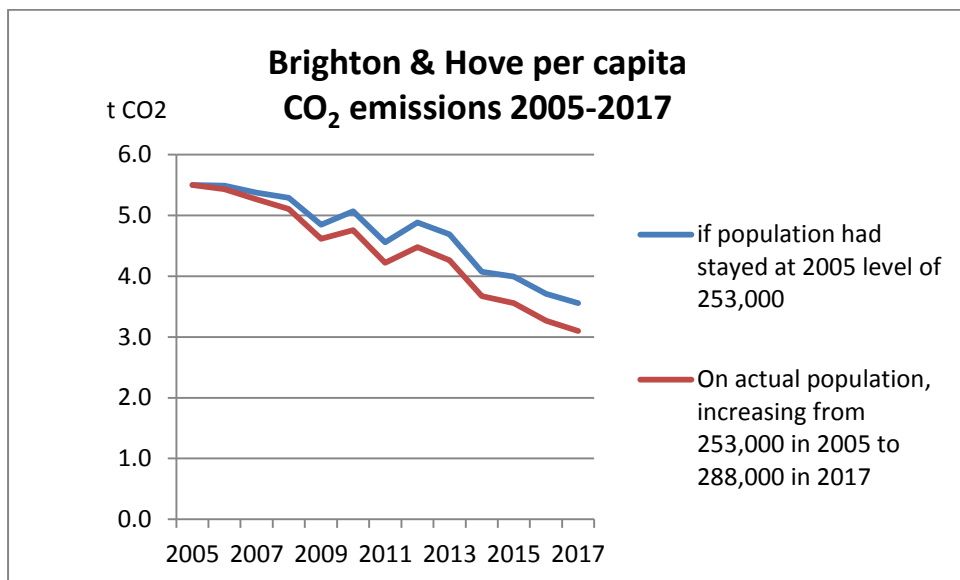
Briefing by International & Sustainability Team Sept 2019

Carbon reduction targets in Brighton & Hove – to date

BHCC pledged to reduce carbon emissions across the city by 42% by 2020 and 80% by 2050, from a 2005 start point. In 2018-19, B&HCC had achieved a 40.6% reduction, and is confident of achieving the 42% reduction target by 2020.



The main reason for falling CO₂ emissions was the rapid decarbonisation of the national electricity grid.



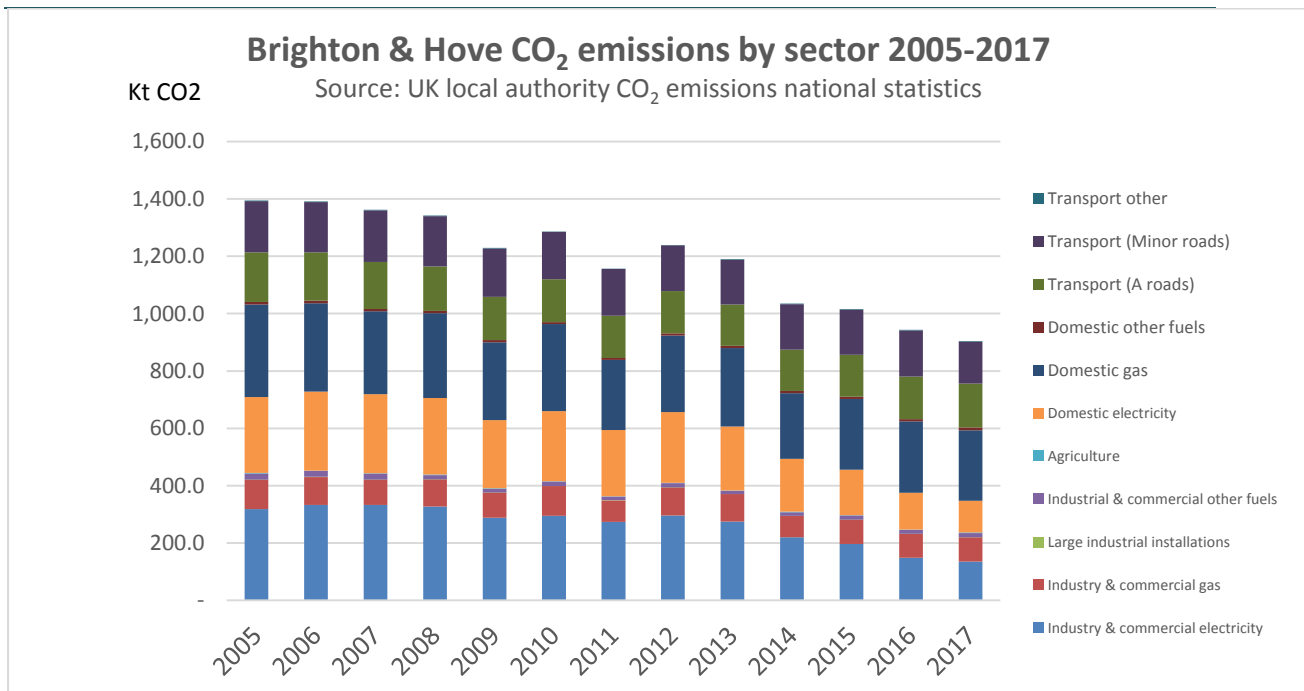
While the population of Brighton & Hove increased by 35,000 (14%) from 2005 to 2017, per capita carbon emissions fell from 5.5 to 3.1 tonnes CO₂

Carbon emissions

Often used as shorthand for **Greenhouse Gases (GHG)**. There are six main greenhouse gases which increase global warming and are linked with human activity:

- Carbon dioxide (CO₂)
- Methane (CH₄)
- Nitrous Oxide (N₂O)
- Hydrofluorocarbons (HFCs)
- Perfluorocarbons (PFCs)
- Sulphur hexafluoride (SF₆)

The different gases can be converted to “Carbon dioxide equivalent” (CO₂e) to compare or aggregate their global warming potential



A bit more detail:

- Gas consumption fell somewhat, because of better insulation and more efficient boilers
- CO₂ emissions from transport and agriculture fell hardly at all
- Around 40% of emissions came from the home, and one-third from transport.
- In 2016, Brighton & Hove ranked 7th of 16 comparator UK cities

Towards 2030 – a route map to carbon neutral

Carbon neutral = Reducing carbon emissions as much as possible AND offsetting residual carbon emissions, eg through tree planting or fuel poverty programmes, so the net emissions are zero.

Net Zero Carbon = Same as carbon neutral – perhaps greater emphasis on actions to cut carbon

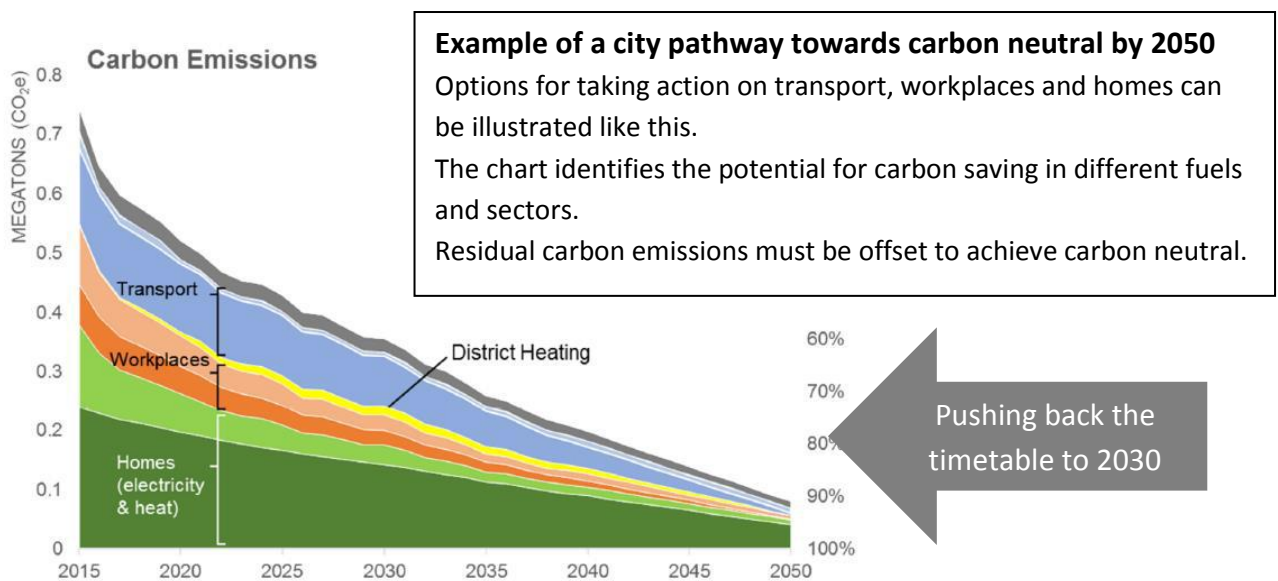
Zero Carbon = No carbon emissions

‘Carbon neutral by 2030’ is a target which specifies how much carbon must be cut, and how quickly. It is a [science-based target](#), aligned with the goals of the Paris Agreement – to limit global warming to well below 2°C compared to pre-industrial levels.

The target is based on the concept of a carbon budget – the amount of carbon emissions that can be released into the atmosphere from now on, and still stand a chance of remaining below 2°C.

Brighton & Hove City Council carbon neutral target is based on:

- Geographical boundary of the city council (we could also include emissions from agricultural land owned by BHCC outside the city boundary, this would require additional calculations)
- Full year data
- Emissions from all sources, including the council’s own activities and estate, as well as activities where the council has no direct control and limited ability to influence.
- To be agreed – interim targets for greenhouse gas reduction



Measuring carbon emissions – KPIs

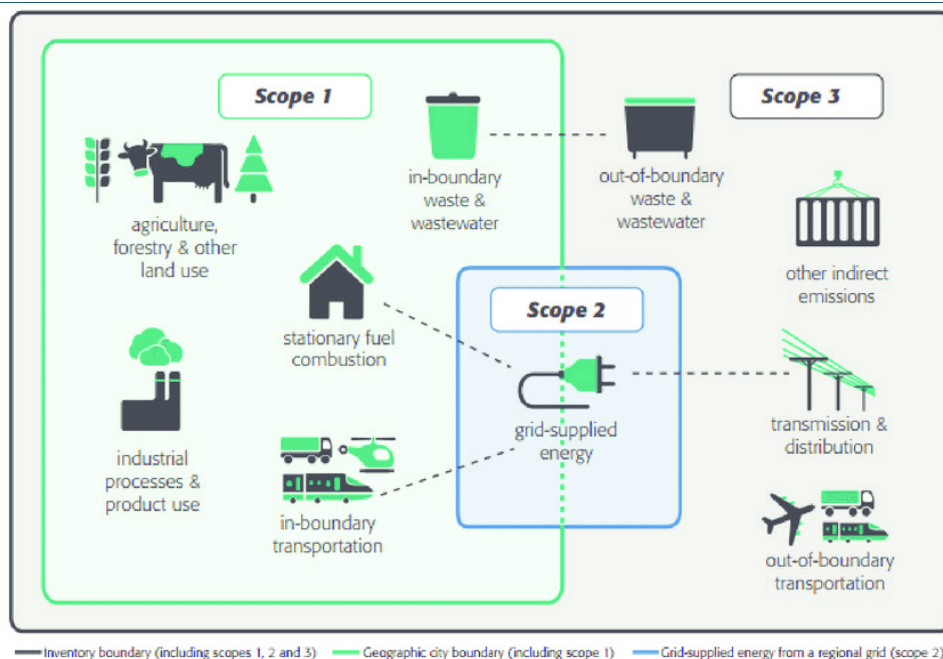
At BHCC’s Policy, Resources and Growth Committee on 11 July 2019, BHCC agreed to include an additional corporate KPI to measure performance in respect to sustainability and carbon reduction to meet the objective of the City being carbon neutral by 2030.

Scope 1, 2 and 3 carbon emissions

Scope 1 = All direct emissions produced inside the city, eg gas combustion, transport, waste

Scope 2 = Indirect emissions from grid-supplied electricity produced outside the city

Scope 3 = All other indirect emissions that occur outside the city boundary, as a result of activities and consumption taking place within the city, such as aviation, waste disposal, agriculture; and water, food and services produced outside the city



Currently BHCC KPIs track the widely used LA estimates of CO₂ measure of emissions from electricity, gas, transport and agriculture within the city boundary, produced by BEIS.

Cities which are signed up to the Global Covenant of Mayors, C40, the Carbon Disclosure Project (CDP) and those which use BSI PAS 2070 (most London boroughs) report on Scope 1,2 + 3 emissions.

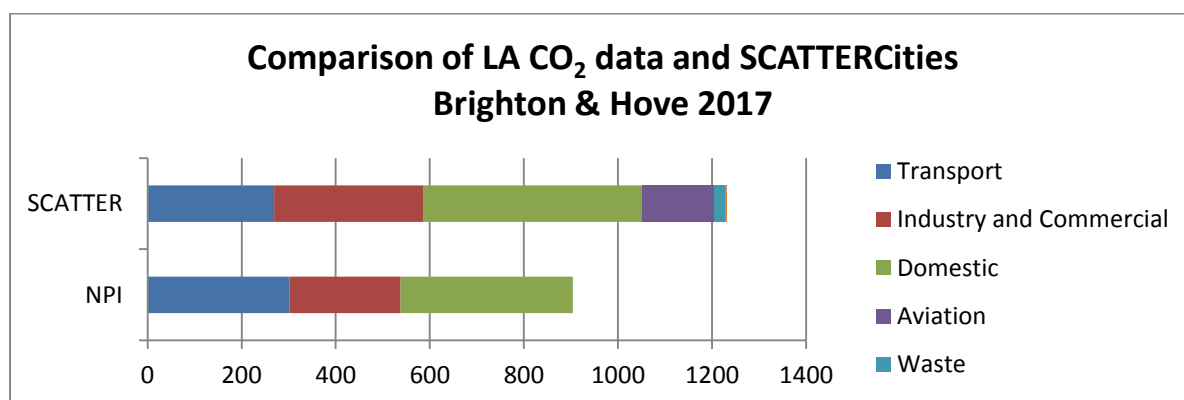
SCATTER Cities is a new tool for measuring carbon emissions, created by Manchester, Nottingham and the Tyndall Centre with support of BEIS. [SCATTER](#) follows the globally recognised city-wide emissions reporting standard, the Greenhouse Gas Protocol for Cities ([GPC](#)), and is compatible with the Global Covenant of Mayors and others.

COMPARISON	Local Authority CO ₂ estimates	SCATTER Cities
Scope	Scope 1, 2	Scope 1, 2, 3
Greenhouse gases measured	Carbon Dioxide	Carbon dioxide, Methane, Nitrous Oxide
Years data is available for	2005-2017 and ongoing	2017 and ongoing
Compliant with reporting required by...	Partial only	Global Covenant of Mayors Common Reporting Framework (including C40) Carbon Disclosure Project

		(partial) Greenhouse Gas Protocol for Cities
Other features	none	Simple scenario modelling Visual outputs - graphs
Cost	Free	Free

The total emissions measured by SCATTER are greater than those measured by the LA CO₂ estimates data on which BHCC’s KPI is currently based. For example, SCATTERCities includes emissions from aviation, whereas the LA CO₂ data does not.

It would not be difficult to run SCATTER side by side with BHCC’s existing KPI .



Appendix 4. Sustainability & Carbon Reduction Investment Fund – Overview

25 September 2019

Background

Capital funding of £500k towards investment in sustainability and carbon reduction projects was agreed at Budget Council in February 2018. The Sustainability & Carbon Reduction Investment Fund (SCRIF) fund will support work to help deliver on the ambitious commitment to be a carbon neutral city by 2030. The SCRIF will support projects under the following themes:

- **Energy Efficiency, renewable and community energy** development, including solar PV and district heating, in line with the emerging Greater Brighton Energy Plan
- **Biodiversity enhancement** in the urban and rural estate in support of the Brighton Hove & Lewes Downs Biosphere Management Strategy
- **Active and Sustainable travel**, and supporting the decarbonisation of the transport network
- **Green Infrastructure**, Sustainable water and Sustainable Urban Drainage projects in line with the emerging Greater Brighton Water Plan and the Biosphere Management Strategy
- Moving towards a **Circular & Sustainable Economy** in line with the Sustainable City objective of the Economic Strategy
- **Healthy, sustainable and fair food** for all through the delivery of the City's Food Strategy

Further background on the SCRIF is contained in two reports taken to Policy, Resources & Growth Committee on [21 March 2019](#) and [11 July 2019](#).

Key info

- SCRIF can only fund **capital** items. The definition of capital expenditure is on The Wave [here](#)
- The SCRIF fund will support commissioned projects, delivering directly against the above themes.
- There will be an initial call for projects in September 2019, followed by additional call(s) as required, depending on remaining funds.
- Council officers are invited to put forward projects using the SCRIF Expression of Interest form (EoI).
- Projects will be objectively assessed against various themes (eg strategic fit, deliverability, budget including additional funding leveraged, risk) using agreed criteria. Please see attached project assessment form for info.
- Decisions on project approvals will be taken by the Executive Director, EEC, in consultation with the SCRIF Member Oversight Group.

- Whilst this is not an open call for projects (ie outside the city council), council officers are encouraged to work with local partners as appropriate.
- There is a maximum SCRIF contribution of £100k per project. There is not a lower limit.
- SCRIF funding can be spent in 2019/20 and 2020/21.
- Leads for SCRIF projects will report on project delivery and spend on a quarterly basis and updates will be reviewed by the SCRIF Member Oversight Group.

Timetable and next steps

- First call for SCRIF projects 27 September 2019 via email
- Deadline for submission of SCRIF Expression of Interest form to sustainability@brighton-hove.gov.uk by **18 October**
- Member Oversight Group meeting to approve projects week of 18 or 25 November (tbc)
- Project decisions communicated to SCRIF project leads late November / early December

More info

For general queries on SCRIF and the Expression of Interest process contact:

rachel.williams@brighton-hove.gov.uk x 1098

mita.patel@brighton-hove.gov.uk x 3332

For queries / advice on estimating carbon savings contact:

kirsten.firth@brighton-hove.gov.uk x2426

For queries / advice on capital expenditure contact:

rob.allen@brighton-hove.gov.uk x 1245

Appendix 5. Climate change mitigation and adaptation projects. August 2019

Mita Patel, Sustainability Programme Office, Brighton & Hove City Council

In January 2019 Brighton & Hove City Council declared a climate emergency and committed to becoming carbon neutral by 2030. This was a demonstration of its commitment to tackling climate change and in its role as lead authority for the Greater Brighton region and for the [Brighton & Lewes Downs UNESCO Biosphere programme – The Living Coast](#).

Brighton & Hove is already delivering ambitious programmes & activity across all areas. It is worth highlighting some of core areas of activity that will underpin our ambitions towards carbon neutrality and helps to drive this forward.

- The city council is the lead authority for the UNESCO Biosphere designated programme - The Living Coast – which makes the region an international demonstration area for sustainability and sets our commitment on a global stage for tackling climate change.
- We are creating a Circular Economy Routemap for the council and city which will present opportunities to understand how better use of materials, resources and space can help to significantly reduce our carbon footprint.
- The council is investing in developing a corporate energy programme both across its assets and across transport infrastructure which will accelerate energy production from renewables, reduce carbon emissions, support significant costs savings, and future proof the city by investing in sustainable transport infrastructure and also in supporting more sustainable forms of travel for residents and visitors.
- The council is lead authority for the Greater Brighton Economic Region which is delivering on an Energy Plan and a Water Plan for the Greater Brighton area. Both will support long terms environmental resilience and future proofing around these two key areas of energy & water, whilst maximising opportunities this can bring for supporting growth in the region.

The list below provides a comprehensive list of key projects, activities and programmes that Brighton & Hove City Council are investing in to tackle climate change, reduce carbon emissions and making the city more prepared and resilient to the impacts of extreme weather events.

Area	Description
Corporate Energy projects	
Solar PV installation schools	Supporting schools to install solar PV on a rent-a roof basis through a framework set up by P&D
Solar farm feasibility work	Feasibility study for a solar farm at Falmer. This work will be funded from an EU funded project call SOLARISE
Solar PV to corporate buildings	Installation of solar PV to corporate buildings. £565k budget for 2019-20 and £500k for 2020-21 approved.
LED lighting	Installation of LED lights to corporate buildings if funding made available from the SCRIF
Multi-Functional Devices (Printers, Scanners, Copiers)	The Corporate Contract for MFD's is currently being re-procured. As part of the requirements we are requesting that suppliers demonstrate <ul style="list-style-type: none"> • Carbon reduction in manufacturing, delivery operations • Device Carbon footprint • Device energy efficiency
Heat pump retrofit feasibility	Feasibility study to replace night storage heating system at a seniors accommodation scheme with a ground source heat pump
Funding bid for Housing energy efficiency retrofit	Joint funding bid with University of Brighton to upgrade 70 social housing properties from EPCs D/E to C/B/A. If the funding bid is successful, this programme of work will allow BHCC to fully cost the ambitions set out in the 2018 HRA Energy Strategy.
Transport & Travel	
Personalised Travel Planning	3,000 door knocks in specific are, 1,000 travel conversations, 200 motivational interviews, 60 people assisted in depth (£300 of in-depth help with walking and cycling for those seeking work or training).
Personalised Travel Planning	Grants for cycle storage, parking and other facilities - Housing trusts; Charities
Access to Education	School travel planning (geographical focus); Working with 12 school sites in Access Area One to increase walking, cycling and public transport and reduce the number of pupils and staff travelling by car. Also support for 2nd 'Bike it' officer. Sustainable travel events; Walk to school week and month; School streets temporary road closures. Support for Air Quality education programmes in 7 city schools.
School travel planning	Grant funding for nurseries and schools to improve buggy, scooter and cycle storage and other facilities.
Access To Work	Work based sustainable travel events; Work based travel planning support & personalised travel planning; DC travel planning support
Work based travel planning	Grant funding for employers to improve cycle storage and shower facilities.

Encouraging Cycling	City Cycle skills and maintenance programmes for Adults; E Bike and E-cargo bike promotions. Funding for Sustrans Bike it officer - in depth project working with 7 schools. Air quality training; Extra-curricular clubs at Primary and Secondary including skills, maintenance & repair; Girls' cycling groups.
Bikeability training	Free cycle training for schools; Holiday park courses for under 14s.
Access Road Safety Campaigns	Share the roads' campaigns - Safe Pass for Drivers and Cyclists; Exchanging places events for Cyclists; Distraction campaigns for pedestrians and cyclists; Junction awareness.
Bikeshare support (revenue)	Service crew seasonal expansion to meet peak demand
Extension of bikeshare scheme	Fleet expansion from 450 to 570 bikes ; Hub expansion from 50 to 70 hubs
Lamp post EV charger installations	In April 2018 the council secured £300k funding from the Office for Low Emission Vehicles (OLEV) to be matched by £100k investment from the private sector. This is for 200 lamp post chargers located mainly in the city's controlled parking zones in streets without off street parking.
Rapid EV charger installations	In November 2018 the council successfully bid for £468k of OLEV funding (again 75% of total cost) towards 4 rapid charger hubs for taxis.
EV Charging Points (new homes)	All parking bays being delivered under the New Homes For Neighbourhoods programme will be fitted with the necessary infrastructure to facilitate EV charging.
Housing energy projects	
SHINE project (EU funded)	SHINE is an EU funded project that provides energy saving advice, small energy saving measures and boiler enhancements
HRA Boiler Replacement Programme	Upgrade of HRA boilers to A rated highly efficient gas boilers
Warmth for wellbeing	Annual programme of energy saving advice and small measures
Ground Source Heat Pumps	Alternative energy sources to fossil fuels are being actively explored for sites being delivered under the New Homes for Neighbourhoods Programme. Research is being undertaken into the Whole Life Costs associated with GSHP, ASHP and traditional gas fired central heating for the Victoria Road Housing scheme
Living Walls	Living walls are being built into the design of some key housing projects under the New Homes for Neighbourhoods Programme. These walls reduce the building's carbon footprint, reduce air pollution, control temperature within the building, reduce noise transfer, increase biodiversity and increase wellbeing through their biophilic properties
Waste & Recycling	

Recycling	Increasing recycling through moving from box collections to larger wheelie bin containments, where possible across the city. A number of awareness campaigns are also being introduced with a current focus on students, to increase levels of recycling. A review of the refuse and recycling collection service is also underway, to assess options for improving the rounds and introduce efficiencies impacting on the levels of emissions.
Fleet improvements	Investigating procurement of a new fleet and carbon emissions developments in relation to electric vehicles and other low emission types and to make recommendations to committee.
Community Composting	Working together with Brighton and Hove Food partnership, to provide community composting bins across the city. The aim is to support residents to recycle food waste and reduce the amount of waste created. There continuing efforts to explore sources of funding, to enable expansion of the scheme which is in high demand. Subsidised home composting kits are also made available to encourage residents to recycle their food waste.
Adaptation to Climate Change	
Brighton Chalk Integrated Catchment Management Partnership (ChaMP)	CHaMP is a partnership project between the city council, South Downs National Park, Southern Water, Environment Agency and Natural England. It aims to protect and improv the quality of groundwater in the Brighton chalk block as a valuable natural resource for public water supply. Promoting best practise in sustainable land management to protect the aquifer. Reducing chemical inputs and improving soil health in rural environments, promoting better delivery of solutions in the urban environment including sustainable drainage systems, best practise amenity land and industrial site management. Raise awareness, build understanding, contribute to and undertake robust research to inform work in preventing ground water pollution. High quality groundwater requires less energy intensive processing to make it fit for public water supply, as well as preventing environmental and ecological damage.
Shaping Climate change Adaptive PlacEs (SCAPE) (EU funded)	SCAPE is an EU funded project provides the opportunity to explore and test innovative ways of helping to reduce the risk of flooding to vulnerable properties in two areas of the city: Norton Road (Hove) and Carden Avenue (Brighton).
Rain gardens	We have delivered two Sustainable Urban Drainage System (SUDS) projects for alleviating surface water flooding using our natural engineering's. These projects have also benefited in creating natural habitats for supporting biodiversity and wildlife.
Tourism	
Bio-Cultural Heritage Tourism	BCHT is promoting and enabling sustainable tourism within the Brighton & Lewes Downs Biosphere area to increase value to the visitor economy whilst decreasing impacts from over-tourism. This

(EU funded)	includes working with SMEs in the visitor economy to improve their sustainability performance particularly around energy use, product sourcing and travel; mapping current and predicted tourism impacts against environmentally sensitive areas to enable tourism masterplanning; and developing new sustainable tourism experiences in locations with capacity e.g. Stanmer Park.
Sustainable Events	We are working to support all our outdoors events to reduce their environmental impacts by: adopting more sustainable and circular approaches to running events; finding reusable alternatives for single-use plastics; driving down waste; investing and installing hard infrastructure including power, water, waste facilities so reducing the need for diesel generators, and reducing the need for these to be delivered during set-up of events so reducing carbon emissions associated with deliveries, negative impact to local air quality from congestion associated with events – particularly with city centre event locations. This work is also supported through the Sustainable Events Policy.

Programmes & Policies	
Zero Carbon Homes	A pilot project which aims to deliver zero carbon homes is underway and will be delivered under the New Homes for Neighbourhoods Programme
Sustainable Procurement Policy	The Sustainable Procurement Policy set out the council's approach to sustainable procurement including
Workstyles Phase 4	Workstyles 4 contains a range of projects that have potential to reduce carbon through modernising operational property. These include: Moulsecomb Hub & Housing Scheme, Wellington House, Hollingdean Depot, Brighton Town Hall, City Parks Depot
Environmental Education Programme in schools	The Brighton & Hove Environmental Education Programme (BHee) supports the City's schools in the teaching of environmental issues, supporting schools through delivering on the national Eco-Schools accreditation programme. This includes, delivering classrooms activities, assemblies, workshops with pupils, teachers and twilight training sessions with staff as well as advice over school grounds use.
Planning policy (carbon reduction)	City Plan Part 1 2010-2030 (2016) and draft City Plan Part 2 (2018) - various policies support carbon reduction including Development Area policies (DA1-DA8), Sustainable Buildings policy (CP8), Energy Efficiency & Renewables (DM44), Community Energy (DM45), Heating and Cooling Network Infrastructure (DM46).
Planning guidance (carbon reduction)	PAN08 External Wall Insulation; PAN09 Householder Guidance on Energy Efficiency for Historic Houses in Conservation Areas
Planning policy (adaptation)	City Plan Part 1 2010-2030 (2016) and draft City Plan Part 2 (2018) - various policies support climate change adaptation including Sustainable Buildings policy (CP8), Flood Risk policy (CP11), Green Infrastructure (DM37), Protecting the Water Environment (DM42), and

	Sustainable Drainage (DM43).
Planning guidance (adaptation)	Sustainable Drainage SPD (under preparation)
The Living Coast UNESCO World Biosphere programme	The Brighton & Lewes Downs UNESCO world Biosphere programme - known as The Living Coast - is designated as a global example area for sustainable development, encouraging a balanced relationship between people and their environment. Biosphere reserves have 3 core priorities: to conserve and enhance nature; to support sustainable human development; and to promote environmental awareness, knowledge, learning & engagement. The Living Coast programme includes projects on developing green infrastructure networks; enhancing green spaces; increasing biodiversity; environmental education for school age children on the water cycle; environmental awareness and engagement for adults and children; health & wellbeing in nature for urban residents; and sustainable management of local natural resources (land and water). All projects positively impact climate change mitigation either directly (via operational delivery) or indirectly (via increased knowledge and awareness).
Urban Design Framework (UDF)	The Urban Design Framework (UDF) will be a city-wide document that will seek to identify and set out: - Priorities for planning design guidance; Support public realm improvements that create pedestrian-cyclist friendly spaces and accommodate the needs of all people; Contribute towards the implementation of Public Spaces Public Lives, Streetscape Design Guidelines and other relevant strategies.
Greater Brighton Energy and Water Plan	<p>Energy Plan: Brighton & Hove City Council is leading on the Energy Plan for the Greater Brighton city region which will:</p> <ol style="list-style-type: none"> 1. review existing and previous Energy Plans completed at local authority, regional and national levels 2. analyse current and future energy demand across the region and provide scenarios for carbon reduction towards 2050 and / or 2030 3. provide an indicative pipeline of potential energy projects within the Greater Brighton city region 4. more detailed look at solar and storage opportunities 5. hold 3 workshops to identify appropriate delivery models <p>Water Plan: This is being led by Southern Water and supports collaborative approach to making the region more resilient to the longer terms impacts of climate change, ensuring water accessibility and affordability; supporting positive behaviour change around sustainable water use; sustainable solutions to coastal and urban flooding including more natural solutions for tackling surface water flooding; future-proofing water infrastructure and delivering innovative circular solutions around water and energy.</p>

Appendix 6. 2030: Carbon Neutral: Information from the Communities and Third Sector Team

There are four potential third sector resources for carbon neutral activity:

1. Commissioning Prospectus. The tender for the three year Commissioning Prospectus has just been published. The Prospectus has four Strategic Outcomes, one of which is:

“Protecting and enhancing the health and wellbeing of residents and providing a robust response to climate change through a more circular, sustainable and resilient economy”

There is consequently the potential for initiatives which support carbon reduction to be funded by the £890Kpa prospectus fund. Decisions on the prospectus tender will be made by the Executive Director Neighbourhoods, Communities & Housing under delegated authority. Successful bids will be the best bids that meet the criteria of any of the strategic objectives (there is no requirement to meet all of the objectives or for a particular proportion of funding to be allocated to projects that deliver specific objectives).

Decisions on the prospectus tender are shared for information with the cross-party Members' Advisory Group: Grants. The prospectus strategic objectives were agreed by NICE Committee in July 2019.

2. Communities Fund. The council's annual grants programme provides funding to smaller scale CVS groups. This is an annual funding programme, so there is more potential to increase focus on projects that support a 2030 carbon neutral target. However, there is much less funding on offer than via the prospectus.

3. Rampion Fund/Philanthropy. Rampion provides significant community investment across Sussex (more than £1M to date). This fund is managed by the Sussex Community Foundation (SCF). More generally, SCF works to link potential benefactors with projects to invest in. There is potential for SCF to try to link philanthropic funding to specific carbon reduction projects. The success of this work depends on finding benefactors keen on investing in these types of initiatives.

4. Climate Change Action Fund. Climate Action fund is due to be launched by the National Lottery Community Fund in Autumn 2019. There will be £100 million available over 10 years. It will support community led partnerships in the areas of sustainable energy, sustainable transport, consumption and waste, food and protecting and regenerating spaces and habitats. If required, there will be money for development funding for these partnerships. They are looking to support between 10 and 15 communities, initially, to make the changes they believe will help them take action on climate change. Before applications open in Autumn 2019, they would like to hear from community-led and place-based partnerships who believe they are

already working on high impact climate action and are able to drive real change in their local community.

<https://www.tnlcommunityfund.org.uk/funding/programmes/climate-action-fund#section-1>

