

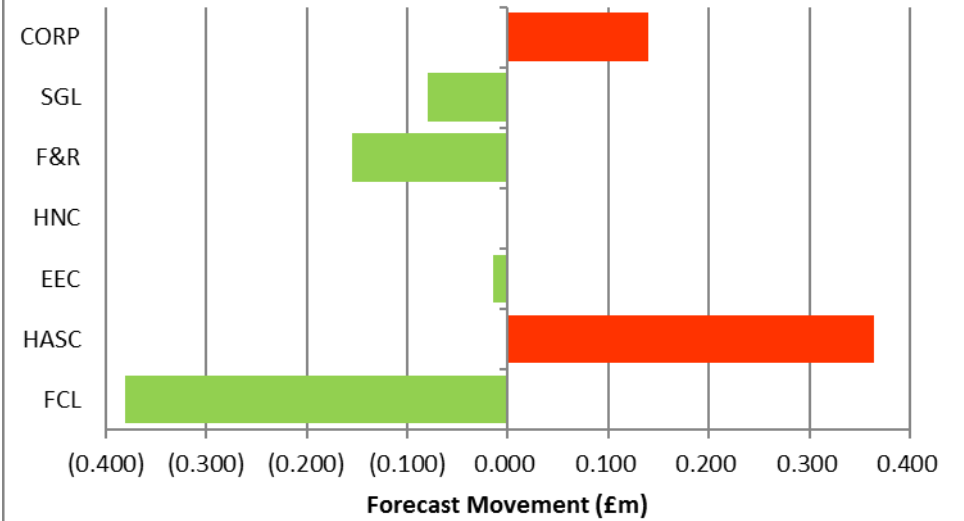


Red = overspent.
Green = Underspent.
Size of bubble indicates scale of under or overspend.

If a directorate is not shown then a break even position is forecast.

Appendix 1 - Financial Dashboard Summary

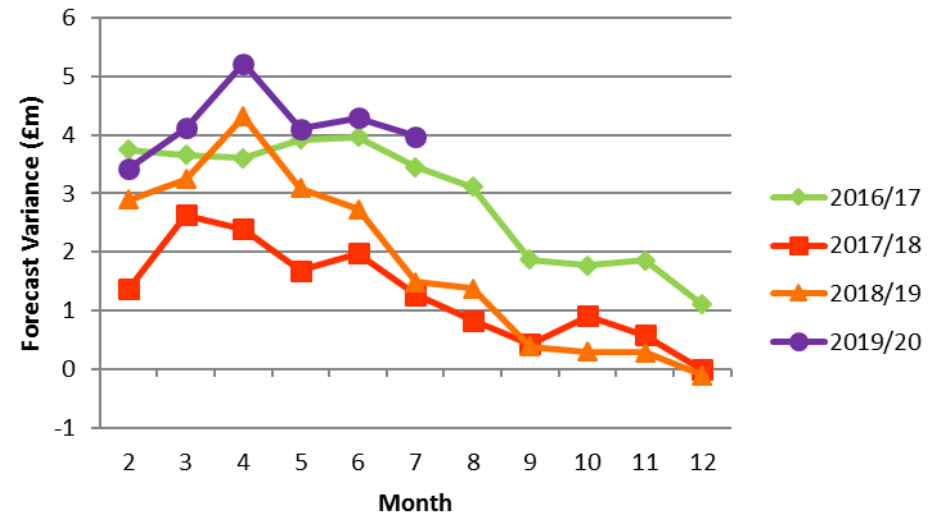
TBM Forecast Movement Month 5 to Month 7



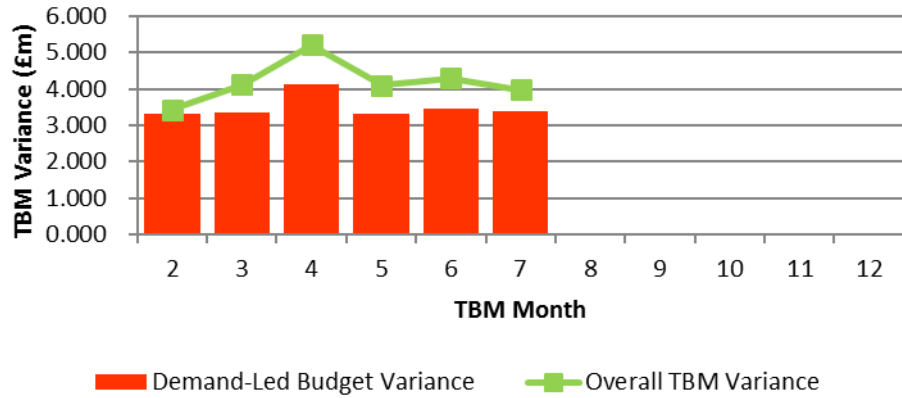
Direction of Travel

Directorate/Fund	Forecast Variance Month 7	Forecast Variance Month 7	Change From Month 5	RAG Rating Month 7
	£'000	%		
General Fund Services:				
Families, Children & Learning	(756)	-0.8%	↑	Green
Health & Adult Social Care	4,149	7.1%	↑	Red
Economy, Environment & Culture	(15)	0.0%	↑	Green
Housing, Neighbourhoods & Communities	(30)	-0.2%	=	Green
Finance & Resources	215	0.9%	↑	Amber
Strategy, Governance & Law	279	5.0%	↑	Red
Corporately-held Budgets	132	1.3%	↓	Amber
Total General Fund	3,974	1.8%	↓	Red
Dedicated Schools Grant (DSG)	(297)	-36.9%	↑	Green
Housing Revenue Account	(200)	0.0%	↑	Green

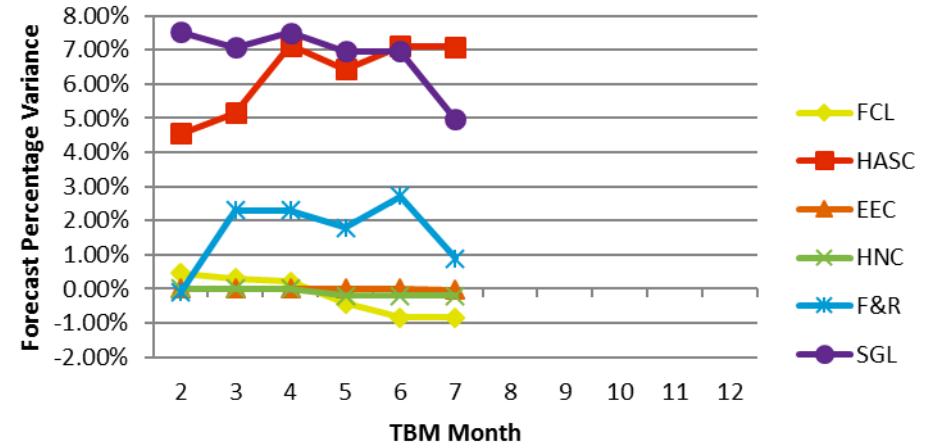
TBM Forecasts



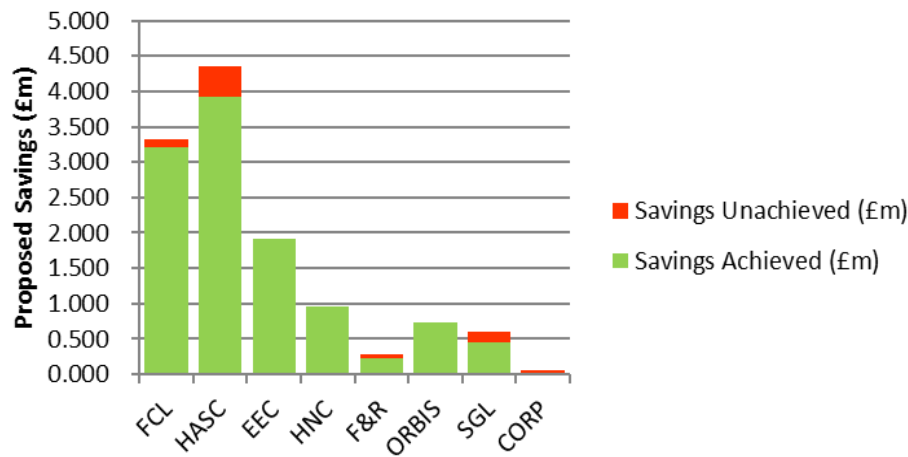
Demand-Led Variance Compared to Overall TBM Variance



Forecast Percentage Variance



Savings Monitoring



4-Year Budget Gaps (Savings Requirement) 2016/17 to 2019/20

