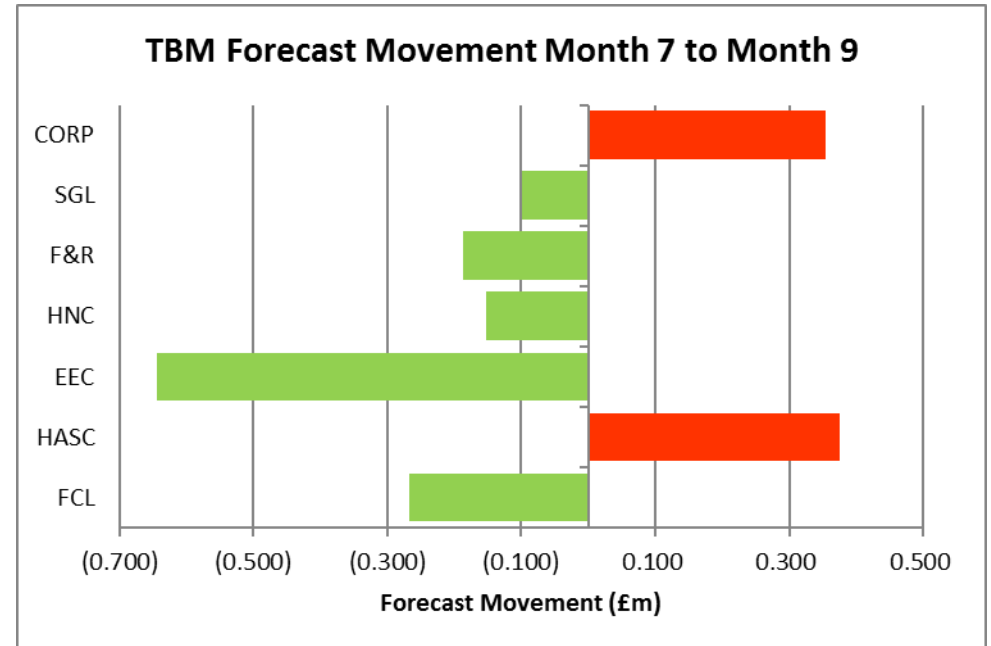
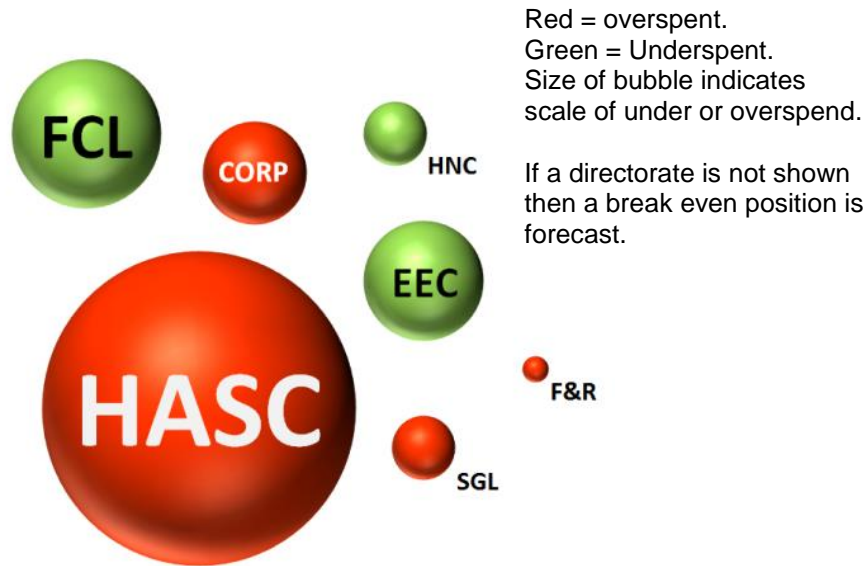


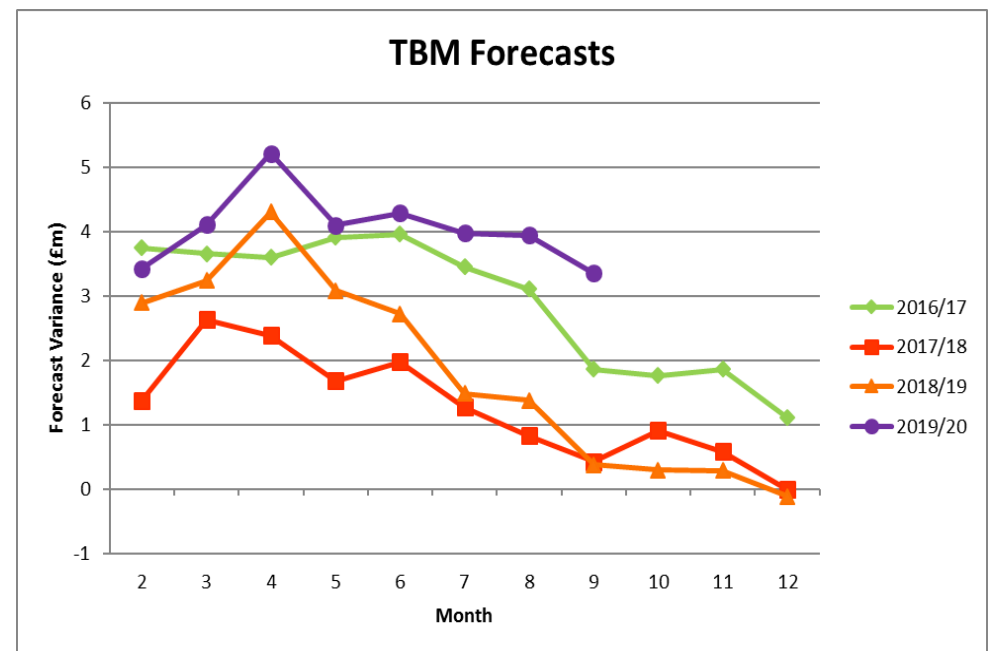
## Appendix 1 - Financial Dashboard Summary



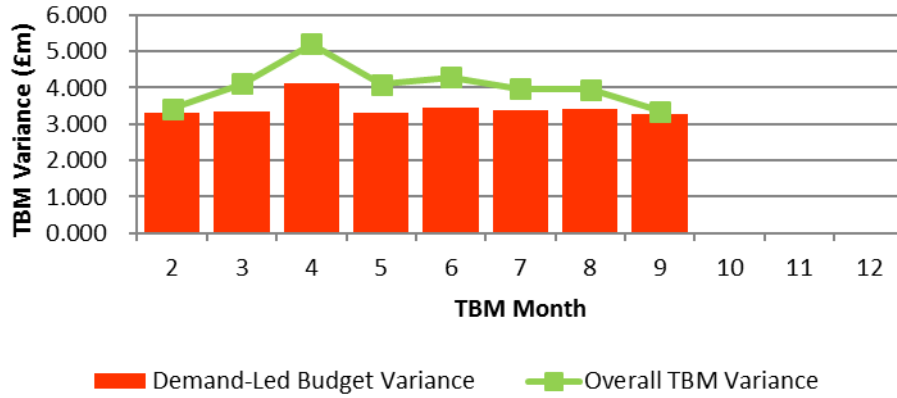
271

Direction of Travel				
Directorate/Fund	Forecast Variance Month 9	Forecast Variance Month 9	Change From Month 7	RAG Rating Month 9
	£'000	%		
<b>General Fund Services:</b>				
Families, Children & Learning	(1,024)	-1.1%	↑	Green
Health & Adult Social Care	4,524	7.7%	↓	Red
Economy, Environment & Culture	(659)	-1.7%	↑	Green
Housing, Neighbourhoods & Communities	(183)	-1.2%	↑	Green
Finance & Resources	29	0.1%	↑	Amber
Strategy, Governance & Law	181	3.2%	↑	Amber
Corporately-held Budgets	487	4.5%	↓	Red
<b>Total General Fund</b>	<b>3,355</b>	<b>1.5%</b>	<b>↑</b>	<b>Red</b>
Dedicated Schools Grant (DSG)	(384)	-47.8%	↑	Green
Housing Revenue Account	(295)	0.0%	↑	Green

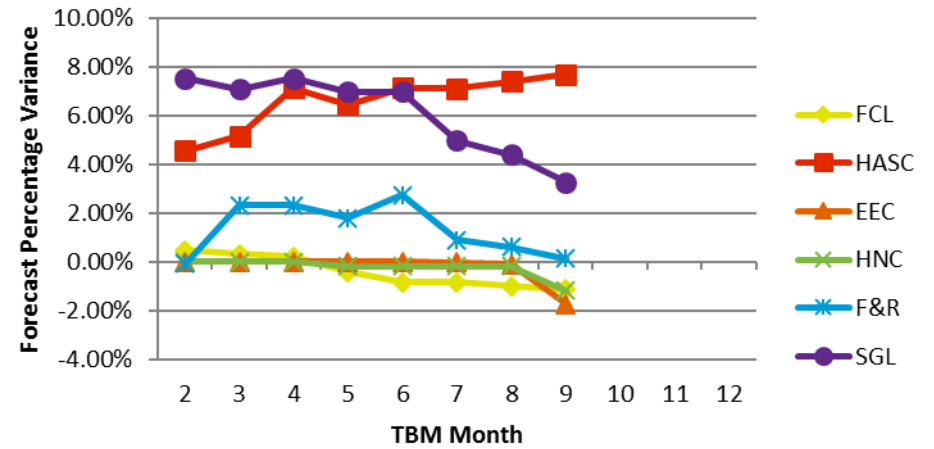
↑ = Improving position, ↓ = Worsening position



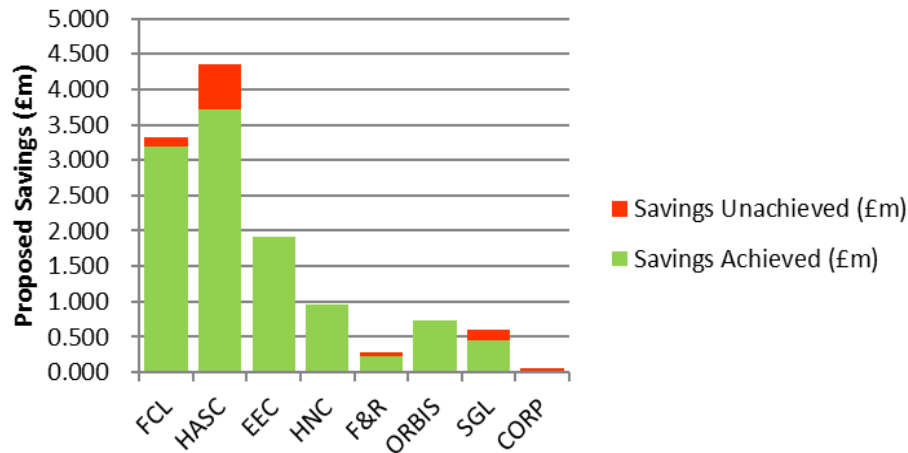
### Demand-Led Variance Compared to Overall TBM Variance



### Forecast Percentage Variance



### Savings Monitoring



### 4-Year Budget Gaps (Savings Requirement) 2016/17 to 2019/20

