

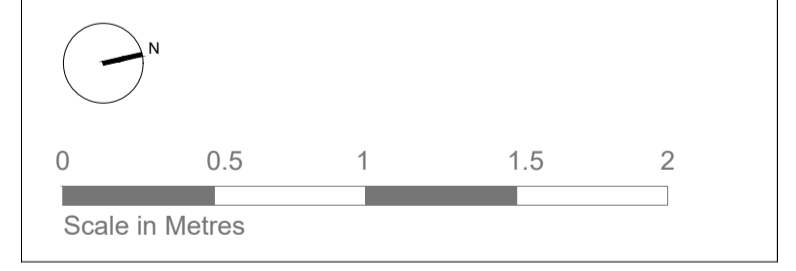
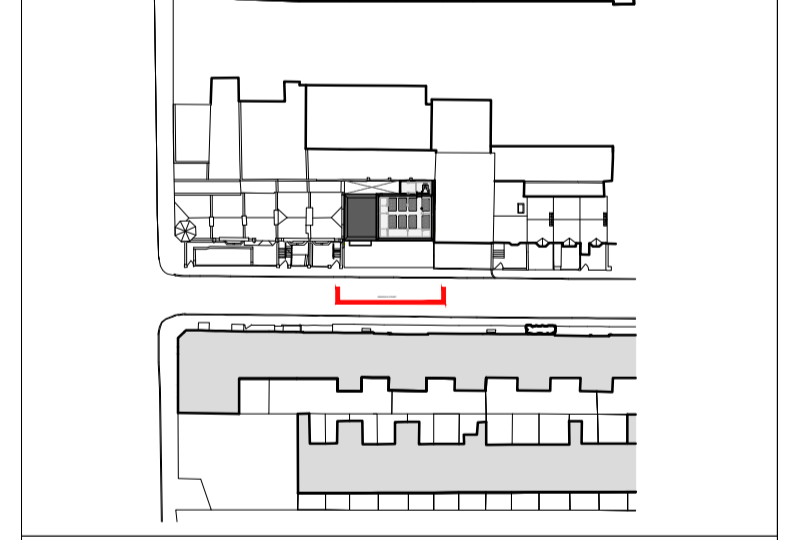
GENERAL NOTES :

- All materials and workmanship to be of a high standard.
- This drawing is the copyright of Innes Associates. It must not be copied or reproduced without permission.
- The design is based on survey information provided by others, dimensions to existing structures should be checked on site prior to construction.
- Do not scale this drawing. If in doubt, ask.
- This drawing must be read in conjunction with all relevant drawings and documents by architect and design team. Any discrepancy is to be reported to the Architect.
- All dimensions in millimetres unless otherwise noted.
- All structural, M&E and landscape information is indicative. Refer to consultant's drawings and specifications for proposals relevant to each discipline.

- KEY**
- 1 Aluminium coping
 - 2 Bike Store
 - 3 Planter
 - 4 Private Garden
 - 5 Covered Access
 - 6 Metres
 - 7a Fixed Guardrail
 - 7b Folding Guardrail
 - 8 Roof access hatch
 - 9 Fixed roof access ladder
 - 10 Photovoltaic panels
 - 11 [Not used]
 - 12 Pocket Doors
 - 13 [Not used]
 - 14 Metal balustrade
 - 15 Brick facing: White clay brick, stretcher bond with light, flush mortar
 - 16 Operable anodised aluminium vent
 - 17 Fixed anodised aluminium panel
 - 18 Heat pump
 - 19 Hydro box
 - 20 [Not used]
 - 21 Acoustic enclosure
 - 22 Aluminium sill
 - 23 Aluminium glazed Swing Doors
 - 24 Aluminium sliding screen
 - 25 Fixed aluminium windows
 - 27 Foul water pump
 - 28 Shadow gap
 - 29 Overflow spout
 - 30 Fitted seating area
 - 31 Operable aluminium windows
 - 32 Decorative anodised aluminium panel/ Vertical ribbed profile
 - 33 Anodised aluminium trims around bay windows
 - 34 White-oiled wooden wall lining
 - 35 [Not used]
 - 36 Anodised aluminium rainscreen cladding
 - 37 Zone for acoustic enclosure
 - 38 Rain Water Outlet (RWO)
 - 39 [Not Used]
 - 40 [Not Used]
 - 41 Boiler Cowl
 - 42 Vent Cowl

D	Height of building increased by 2 bricks	27.02.20	NK
C	Revised Stage 3 + Planning Issue	13.09.19	JM
B	Revised Stage (Draft)	18.07.19	JM
A	Pre - Application	01.05.19	JM

REV	DESCRIPTION	DATE	DRAWN
-----	-------------	------	-------



INNES ASSOCIATES
 ARCHITECTURE & URBAN DESIGN
 6-8 COLE STREET, LONDON SE1 4YH
 T 020 7928 6734
 WWW.INNESASSOCIATES.NET

TITLE East Elevation Proposed		
PROJECT NO 115	DRAWING NO 04 E1	REVISION D
PROJECT 7-9 Frederick Street		
CLIENT Brighton & Hove City Council		
SCALE 1:25	SIZE A1	STAGE 3
DATE Apr 2019	DRAWN BY EM	CHECKED BY JM



161

