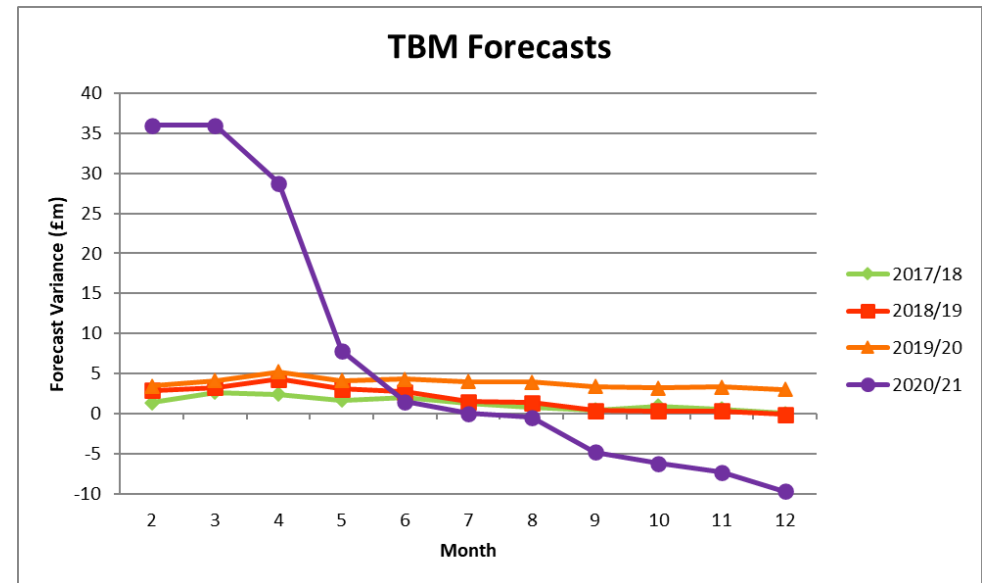


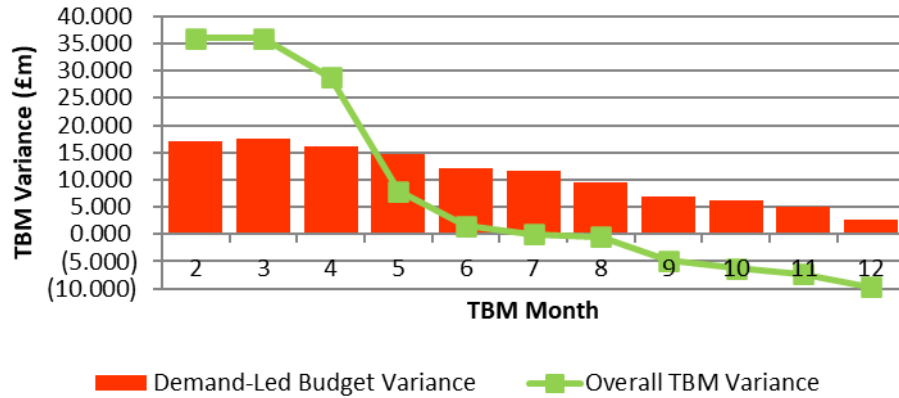
### Direction of Travel

Directorate/Fund	Provisional Variance (£'000)	Provisional Variance Month 12 (%)	Change From Month 9	RAG Rating Month 12
<b>General Fund Services:</b>				
Families, Children & Learning	78	0.1%	↑	Amber
Health & Adult Social Care	3,832	6.1%	↑	Red
Economy, Environment & Culture	5,936	16.8%	↑	Red
Housing, Neighbourhoods & Communities	2,069	15.2%	↓	Green
Finance & Resources	722	3.4%	↑	Red
Strategy, Governance & Law	(458)	-7.5%	↑	Green
Corporately-held Budgets	(21,912)	-47.5%	↓	Green
<b>Total General Fund</b>	<b>(9,733)</b>	<b>-5.3%</b>	<b>↑</b>	<b>Green</b>
Dedicated Schools Grant (DSG)	(746)	-106.1%	↑	Green
Housing Revenue Account	(436)	0.0%	↓	Green

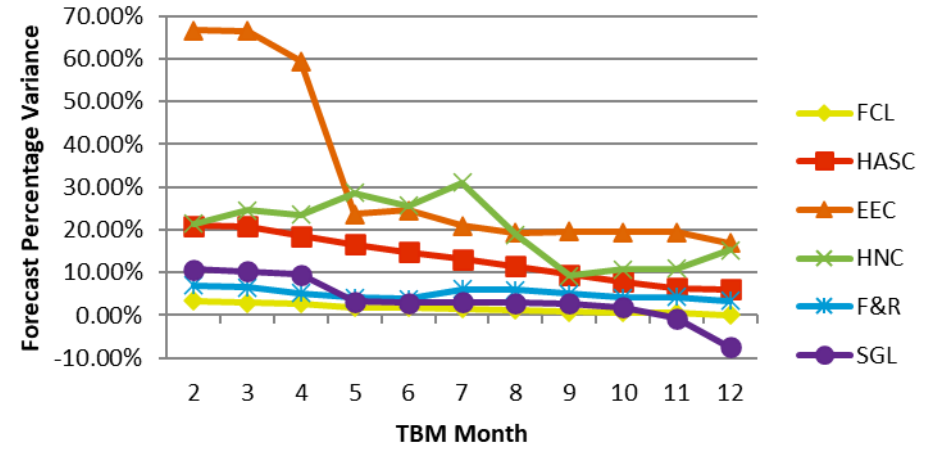
↑ = Improving position, ↓ = Worsening position



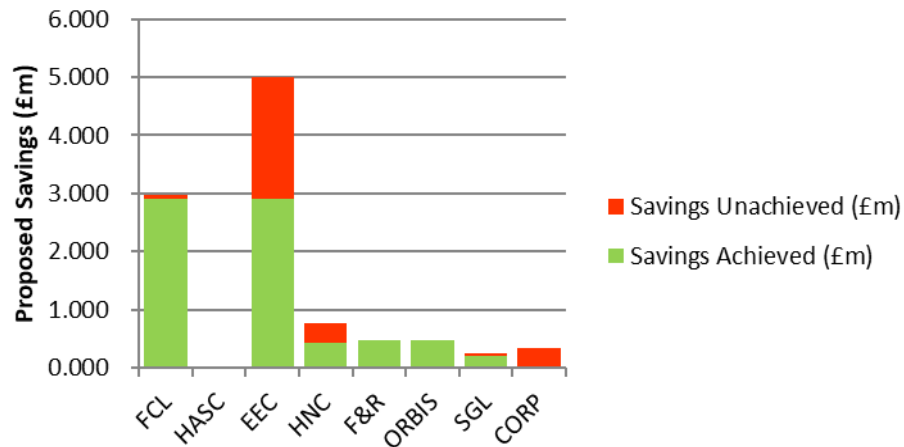
### Demand-Led Variance Compared to Overall TBM Variance



### Forecast Percentage Variance



### Savings Monitoring



### TBM Forecast Movement Month 9 to Month 12

