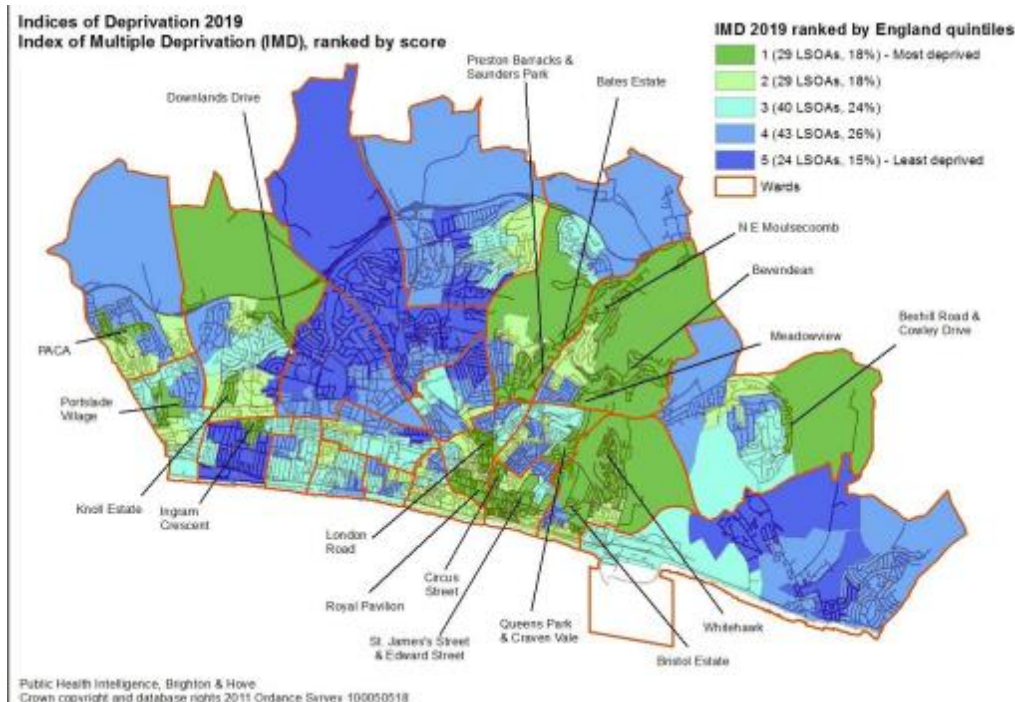
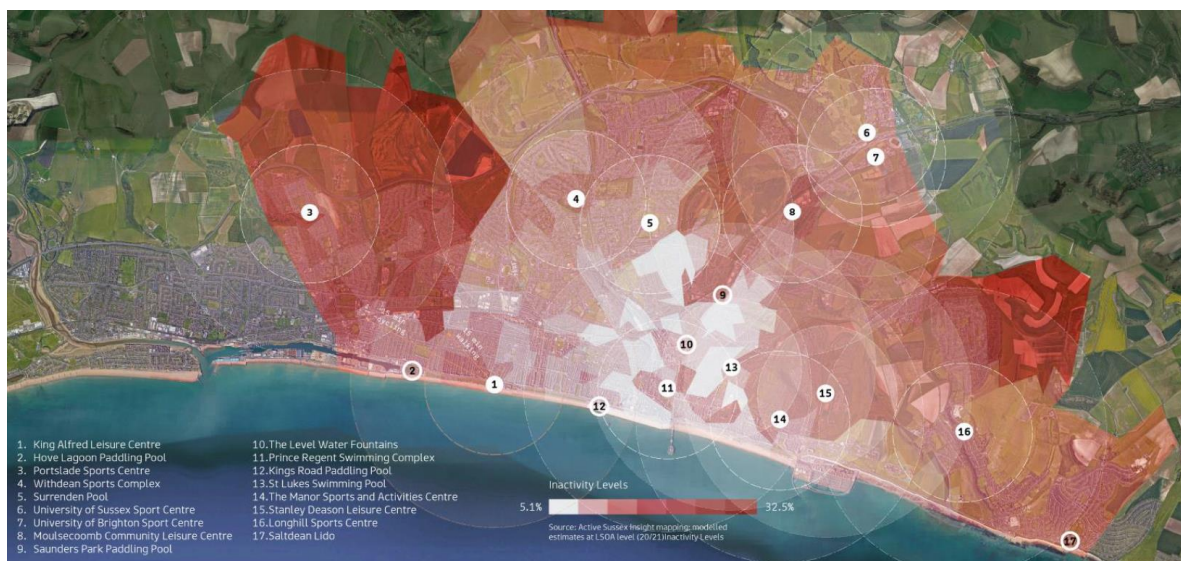


# CHSTE 18<sup>th</sup> January – New Swimming Pool at Withdean Sports Complex and pool provision in East of the City

## Appendix 1 – Catchment Analysis

The map below shows the levels of physical inactivity of residents within the city. The scale shows that the darker red the areas are shaded, the higher levels of physical inactivity there are. Plotted on the map are a range of sports and leisure facilities, with the relevant ones to this report being number 4 Withdean Sports Complex, and number 8 Moulsecoomb Community Leisure Centre.



Levels of physical inactivity, as well as associated health inequalities, are broadly more prominent within areas of deprivation in the city. The highest concentration of

deprivation is in the Whitehawk, Moulsecoomb, Hollingbury, Hangleton & Knoll, and Portslade areas.

An additional pool at Withdean and Moulsecoomb (or other site identified in East Brighton) would provide opportunities for these communities to access important leisure provision to improve health outcomes for local people. In particular: women, those from BAME backgrounds, those with a disability or long-term health condition, as well as the children (1 in 3) who are doing less than 30mins physical activity a day.

As part of the wider plans within our Sports Facilities Investment Plan, the council is also currently considering site options for redeveloping the King Alfred Leisure Centre. One of those site options is to build the new facility further inland, and closer to these specific communities in Hangleton & Knoll and Portslade. If this site is chosen it has the potential to deliver significant health impact and improvement for the communities mentioned above.