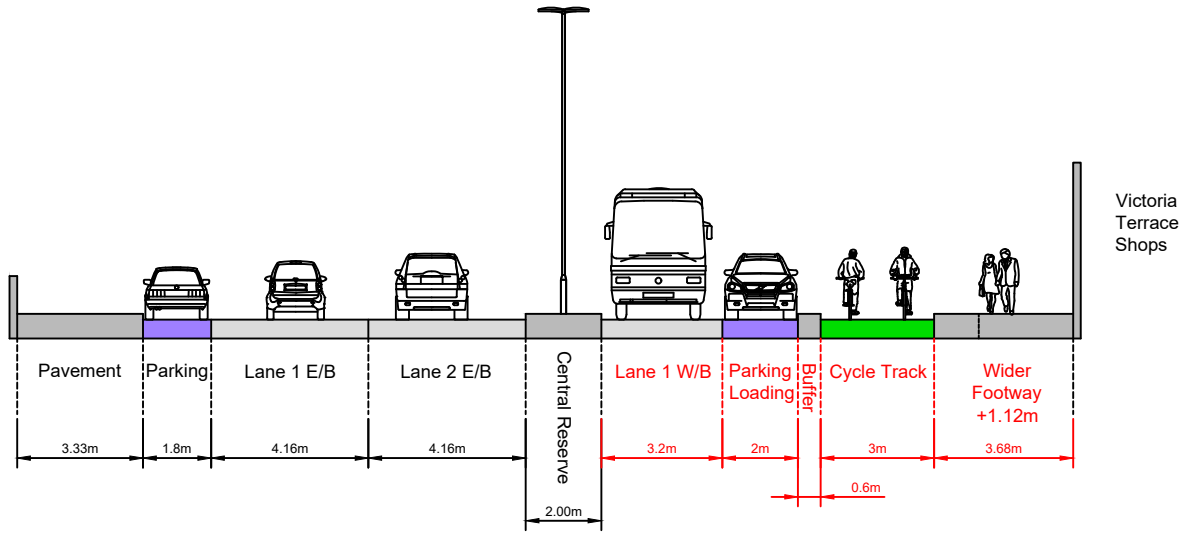
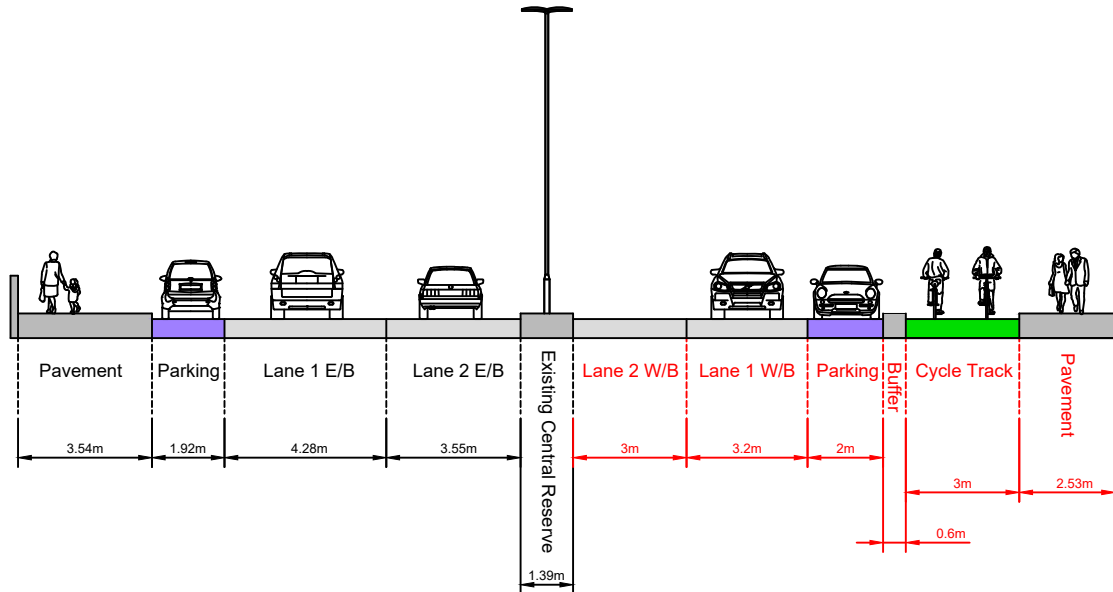


### Fourth Avenue to Hove Street (Lane Take)



### Hove Street to Wharf Road (Footway Take)



PROJECT: A259 Active Travel Corridor			
TITLE: Preferred Option Cross Sections Plan			
LOCATION: A259 Coast Road between Fourth Avenue and Wharf Road, Hove			
DRAWING STATUS: Feasibility			
DRAWN: BAS	SURVEYED: -	CHECKED: -	APPROVED: -
DRAWING No: HD/BAS/A259/004F			
DATE: May 2024	SCALE: NTS	SIZE: A4	REV: A

