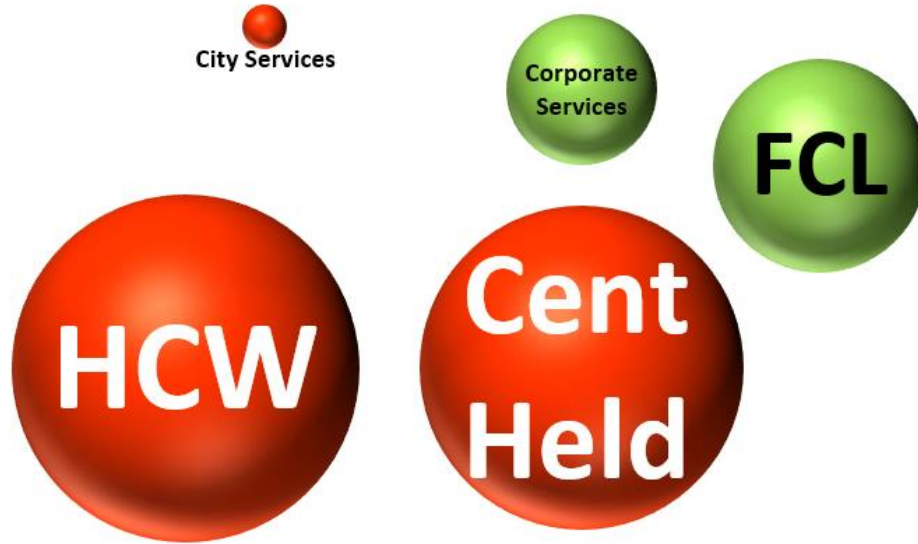


Appendix 1 - Financial Dashboard Summary



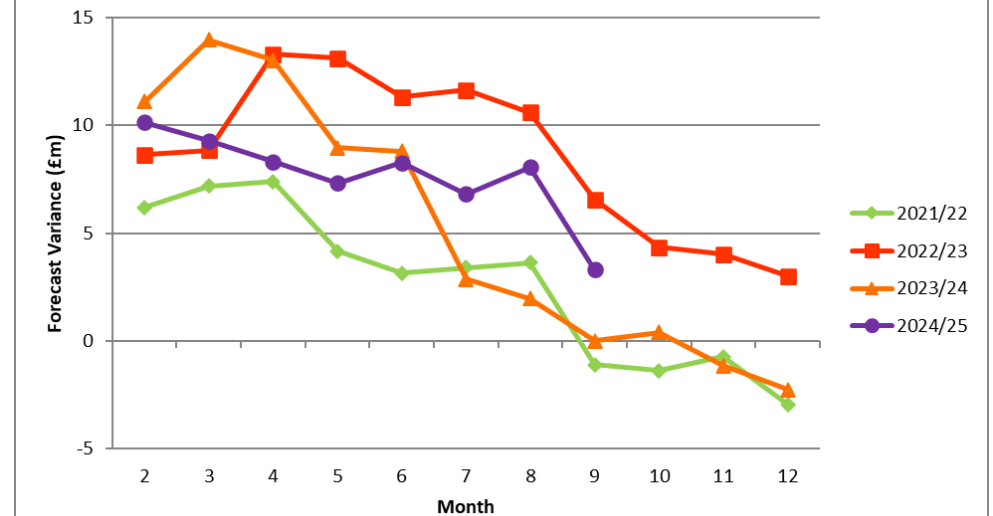
Red = overspent.
 Green = Underspent.
 Size of bubble indicates scale of under or overspend.
 If a directorate is not shown then a break even position is forecast.

Direction of Travel

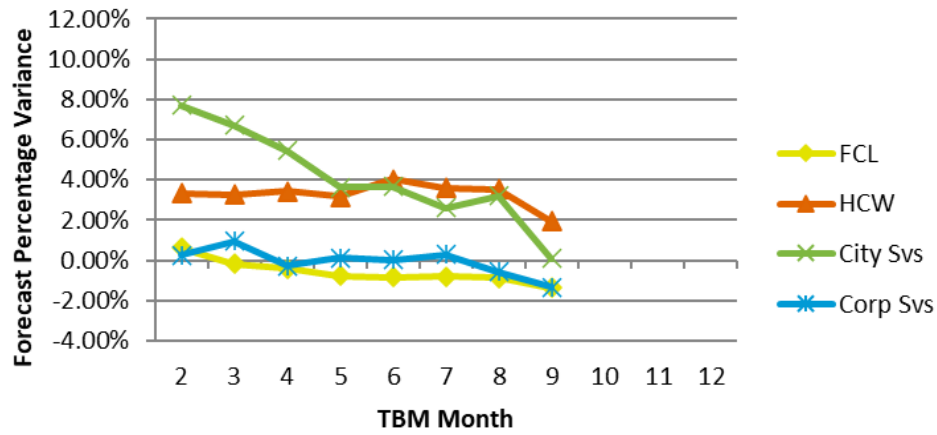
| Directorate/Fund | Forecast Variance Month 9 £'000 | Forecast Variance Month 9 % | Change From Month 7 | RAG Rating Month 9 |
|--------------------------------------|------------------------------------|--------------------------------|---------------------|--------------------|
| General Fund Services: | | | | |
| Families, Children & Learning | (941) | -1.3% | ↑ | Green |
| Housing, Care & Wellbeing | 2,504 | 2.0% | ↑ | Red |
| City Services | 39 | 0.1% | ↑ | Amber |
| Corporate Services | (460) | -1.3% | ↑ | Green |
| Centrally-held Budgets | 2,168 | 10.9% | ↓ | Red |
| Total General Fund | 3,310 | 1.3% | ↑ | Red |
| Dedicated Schools Grant (DSG) | | | | |
| Dedicated Schools Grant (DSG) | 1,276 | 100.2% | ↓ | Red |
| Housing Revenue Account | | | | |
| Housing Revenue Account | 0 | 0.0% | = | Amber |

↑ = Improving position, ↓ = Worsening position

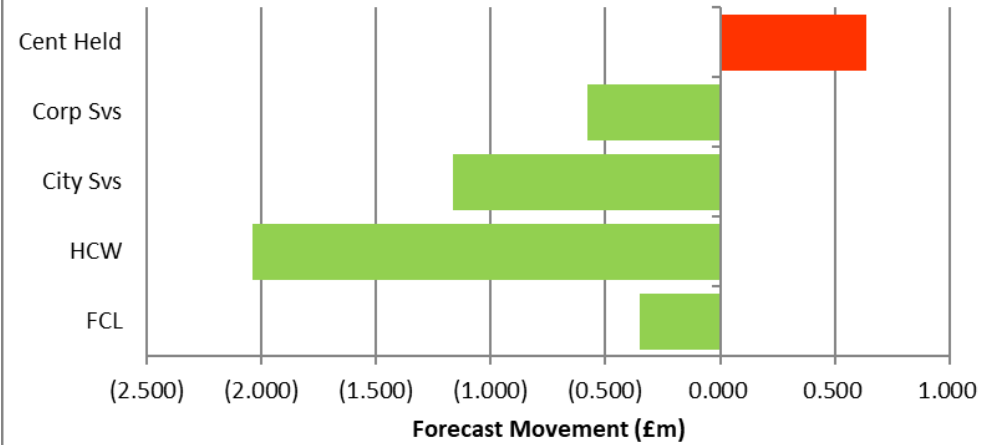
TBM Forecasts



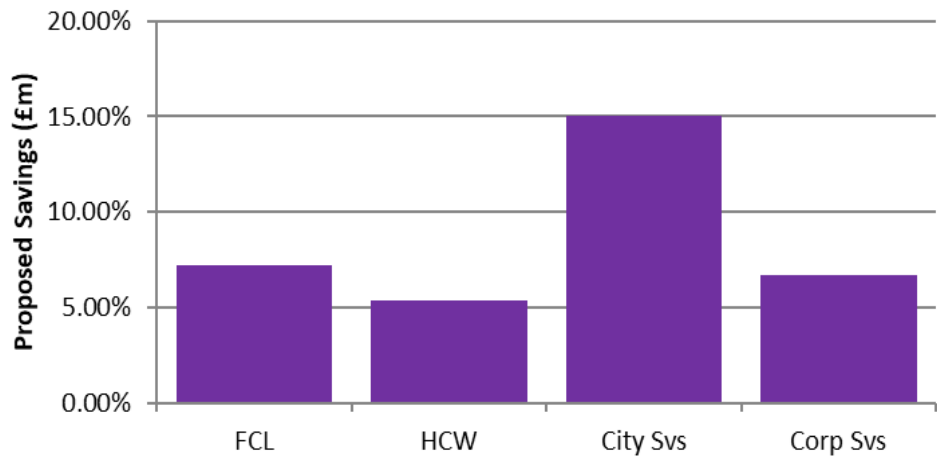
Forecast Percentage Variance



TBM Forecast Movement Month 7 to Month 9



Savings Target as a % of TBM Budget



Savings Monitoring

